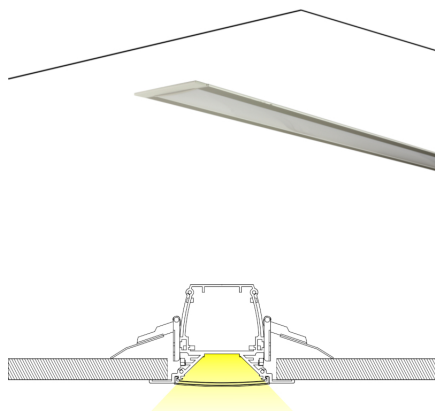


## Description



The new range of the AREM Eco<sup>2</sup> HE Fixtures aims to replace the traditional T8 and T5 fixtures with one or two lamps.

Color temperature tolerance of 3 SDCM MacAdam ellipses, defined by ANSI C78.377:2008

Energy Efficiency Class: A++ in clear polycarbonate and A+ in frost polycarbonate.

Above 50% of predicted savings.

Different design possibilities.

Option with DALI communication system.

Don't send ultraviolet or infrared radiation and is a friendly eco lamp because it's repairable and don't contains mercury, neither other dangerous substance.

## Technical Features:

|                   |   |
|-------------------|---|
| Power source      | 198 to 264V AC 50/60Hz (Class I constant current internal power supply) |
| Power             | 14 ± 1W   |
| Power Factor      | > 0.95  |
| LED Current       | 420 mA  |
| LED Voltage       | 29.5 ± 3 V DC   |
| Useful Lifetime   | 60.000 hours (L70 - 85°C @ 65%H) *                                      |
| Beam Angle        | Clear: 105 ± 5° **  |
| Field Angle       | Clear: 130 ± 5° ***   |
| Nr. of LEDs       | 70 - SMD  |
| Weight            | 2.1 Kg  |
| Working Temp.     | -20 to 40 °C  |
| Tc                | 55°C (maximum case temperature)   |
| Lumen maintenance | LM80 (Report available: <a href="#">LM-80 9000hrs</a> )                 |
| Certificate       | CE / RoHs   |
| Isolation         | Class I   |

\*Luminosity depreciation based on L70.

\*\*Beam angle: 50% of maximum lum.

\*\*\*Field angle: 10% of maximum lum.

## Light Technical Data:

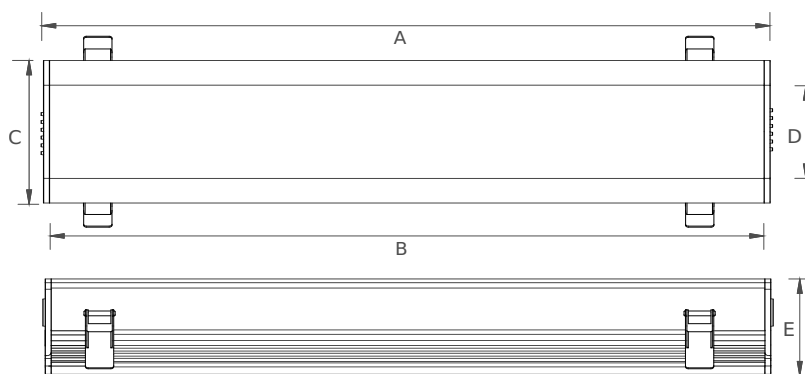
| Reference                          | Description                                   | Lum. flux (Lm)* | Eff. (Lm/W) | Color Temp. (K)** | Color   | CRI > | Lens type |
|------------------------------------|---|-----------------|-------------|-------------------|---------|-------|-----------|
| 35087532131 <a href="#">XXYYZZ</a> | LLED AREM 875 WW303 HE Eco <sup>2</sup> Clear | 1380            | 99          | 3045 ±84          | Warm    | 80    | Clear     |
| 35087534131 <a href="#">XXYYZZ</a> | LLED AREM 875 NW403 HE Eco <sup>2</sup> Clear | 1444            | 103         | 3986 ±144         | Neutral | 80    | Clear     |
| 35087536131 <a href="#">XXYYZZ</a> | LLED AREM 875 CW573 HE Eco <sup>2</sup> Clear | 1444            | 103         | 5668 ±207         | Cool    | 80    | Clear     |
| 35087532132 <a href="#">XXYYZZ</a> | LLED AREM 875 WW303 HE Eco <sup>2</sup> Frost | 1029            | 74          | 3045 ±84          | Warm    | 80    | Frost     |
| 35087534132 <a href="#">XXYYZZ</a> | LLED AREM 875 NW403 HE Eco <sup>2</sup> Frost | 1077            | 77          | 3986 ±144         | Neutral | 80    | Frost     |
| 35087536132 <a href="#">XXYYZZ</a> | LLED AREM 875 CW573 HE Eco <sup>2</sup> Frost | 1077            | 77          | 5668 ±207         | Cool    | 80    | Frost     |

\* Luminous flux ± 7.5%

\* Other color temperatures available upon request



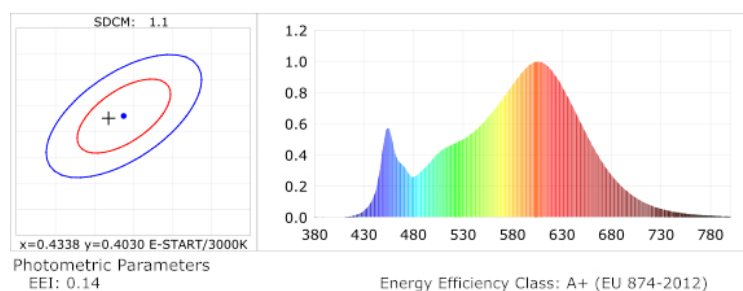
## Dimensions



| A (mm) | B (mm) | C (mm) | D (mm) | E (mm) |
|--------|--------|--------|--------|--------|
| 913    | 883    | 104    | 72     | 70     |

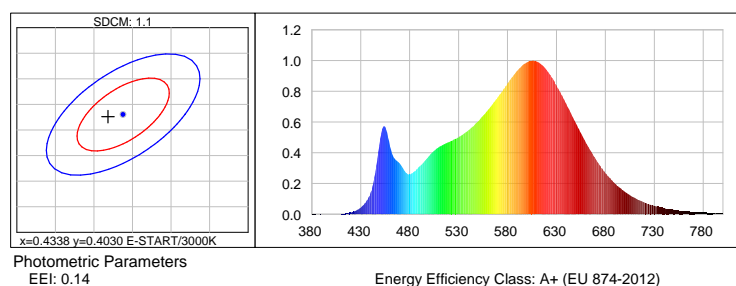
## Photometric Data

### HE LED warm white 3000K 3SDCM



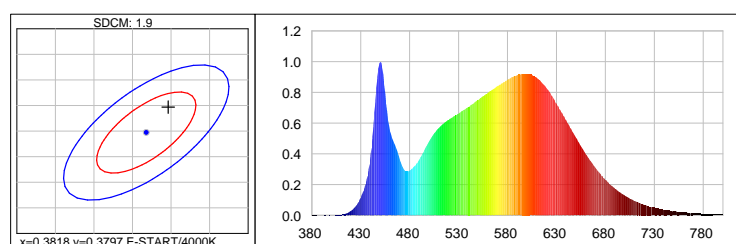
CIE Colorimetric Parameters  
Chromaticity coordinates:  $x=0.4318$   $y=0.4026$   $u(u')=0.2479$   $v=0.3467$   $v'=0.5200$   
CCT:  $T_c=3075K$  ( $duv=0.00012$ ) CRI:  $R_a=84.9$  Color Ratio:  $R=0.229$   $G=0.739$   $B=0.032$

### Warm white 3000K 3SDCM



CIE Colorimetric Parameters  
Chromaticity coordinates:  $x=0.4318$   $y=0.4026$   $u(u')=0.2479$   $v=0.3467$   $v'=0.5200$   
CCT:  $T_c=3075K$  ( $duv=0.00012$ ) CRI:  $R_a=84.9$  Color Ratio:  $R=0.229$   $G=0.739$   $B=0.032$

## Neutral white 4000K 3SDCM



### Photometric Parameters

EEI: 0.13

Energy Efficiency Class: A+ (EU 874-2012)

### CIE Colorimetric Parameters

Chromaticity coordinates: x=0.3846 y=0.3847

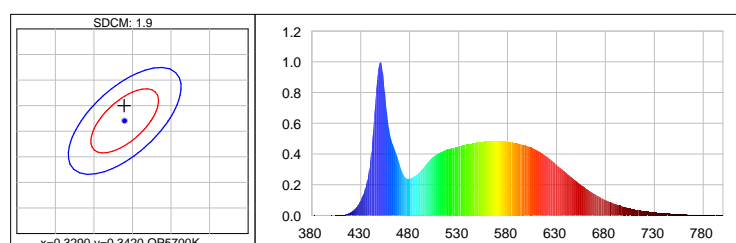
 $u(u')=0.2247$   $v=0.3371$   $v'=0.5056$ 

CCT: Tc=3947K (duv=0.00246)

CRI: Ra= 84.5

Color Ratio: R=0.186 G=0.777 B=0.037

## Cool white 5700K 3SDCM



### Photometric Parameters

EEI: 0.14Energy

Energy Efficiency Class: A+ (EU 874-2012)

### CIE Colorimetric Parameters

Chromaticity coordinates: x=0.3289 y=0.3450

 $u(u')=0.2030$   $v=0.3193$   $v'=0.4790$ 

CCT: Tc=5654K (duv=0.00356)

CRI: Ra= 86.6

Color Ratio: R=0.147 G=0.800 B=0.053

## Options

### Cover type



Clear



Frost

**XXYYZZ** - The last six digits are additional options.

XX - Fixture body finishing.



Natural Aluminum  
XX=01

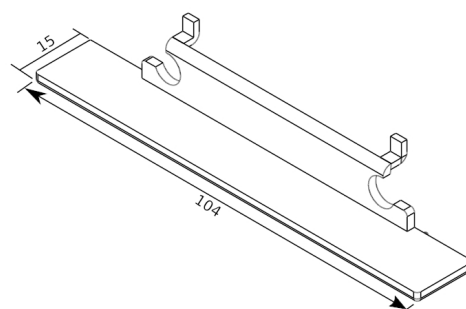
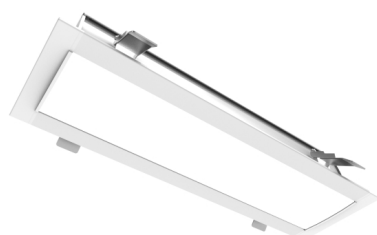


White Aluminum  
XX=02



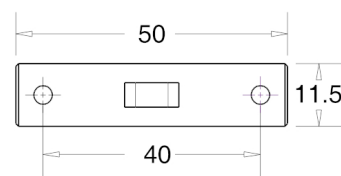
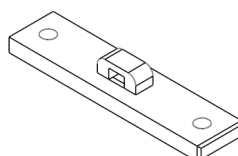
Black Aluminum  
XX=04

## Accessories option



Unit of measurement: mm  
Views

Cod: Grey:8400037206 White:8400037106 Black:8400037306



Unit of measurement: mm  
Arex Union

Cod: Grey:8400037205 White:8400037105 Black:8400037305