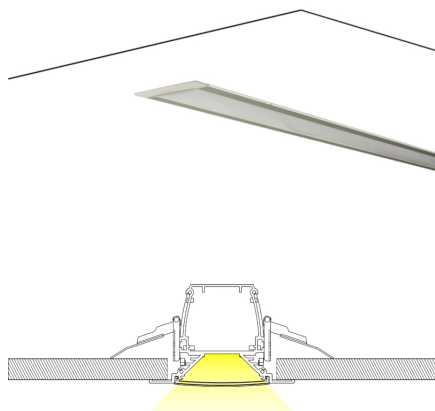


Description



The new range of the AREMEco HE Fixtures aims to replace the traditional T8 and T5 fixtures with one or two lamps.

Color temperature tolerance of 3 SDCM MacAdam ellipses, defined by ANSI C78.377:2008

Energy Efficiency Class: A++ in clear polycarbonate and A+ in frost polycarbonate.

Above 50% of predicted savings.

Different design possibilities.

Option with DALI communication system.

Don't send ultraviolet or infrared radiation and is a friendly eco lamp because it's repairable and don't contains mercury, neither other dangerous substance.

Technical Features:

Power source	198 to 264V AC 50/60Hz (Class I constant current internal power supply)
Power	12 ± 1W
Power Factor	> 0.95
LED Current	355 mA
LED Voltage	29.5 ± 3 V DC
Useful Lifetime	60.000 hours (L70 - 85°C @ 65%H) *
Beam Angle	Clear: 105 ± 5° Frost: 115 ± 5° *
Field Angle	Clear: 130 ± 5° Frost: 165 ± 5° ***
Nr. of LEDs	60 - SMD
Weight	1.0 Kg
Working Temp.	-20 to 40 °C
Tc	55°C (maximum case temperature)
Lumen maintenance	LM80 (Report available: LM-80 9000hrs)
Certificate	CE / RoHs
Isolation	Class I

*Luminosity depreciation based on L70.

**Beam angle: 50% of maximum lum.

***Field angle: 10% of maximum lum.

Light Technical Data:

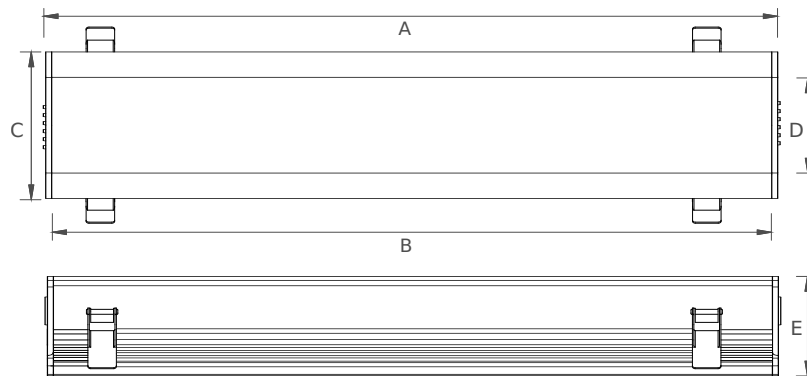
Reference	Description	Lum. flux (Lm)*	Eff. (Lm/W)	Color Temp. (K)**	Color	CRI >	Lens type
35037532121 XXYYZZ	LLED AREM 375 WW303 HE Eco Clear	1166	97	3045 ±84	Warm	80	Clear
35037534121 XXYYZZ	LLED AREM 375 NW403 HE Eco Clear	1220	102	3986 ±144	Neutral	80	Clear
35037536121 XXYYZZ	LLED AREM 375 CW573 HE Eco Clear	1220	102	5668 ±207	Cool	80	Clear
35037532122 XXYYZZ	LLED AREM 375 WW303 HE Eco Frost	870	72	3045 ±84	Warm	80	Frost
35037534122 XXYYZZ	LLED AREM 375 NW403 HE Eco Frost	910	76	3986 ±144	Neutral	80	Frost
35037536122 XXYYZZ	LLED AREM 375 CW573 HE Eco Frost	910	76	5668 ±207	Cool	80	Frost

* Luminous flux ± 7.5%

* Other color temperatures available upon request



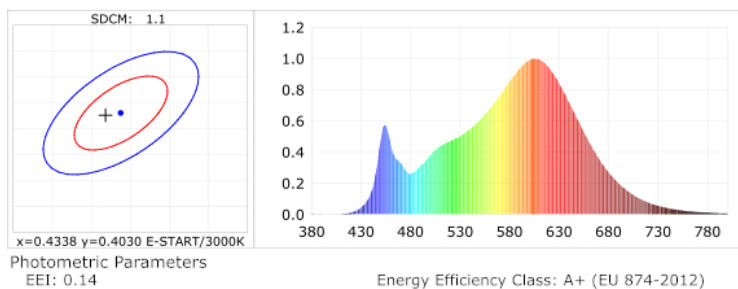
Dimensions



A (mm)	B (mm)	C (mm)	D (mm)	E (mm)
412	382	104	72	70

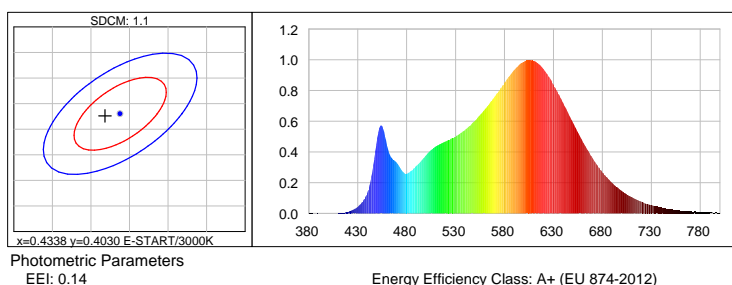
Photometric Data

HE LED warm white 3000K 3SDCM



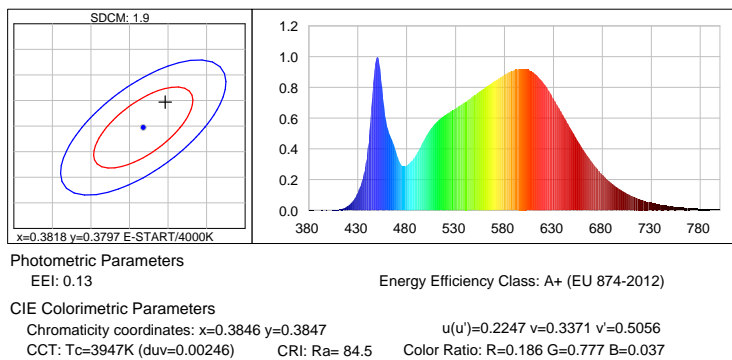
CIE Colorimetric Parameters
Chromaticity coordinates: $x=0.4318$ $y=0.4026$ $u(u')=0.2479$ $v=0.3467$ $v'=0.5200$
CCT: $T_c=3075K$ ($duv=0.00012$) CRI: $R_a=84.9$ Color Ratio: $R=0.229$ $G=0.739$ $B=0.032$

Warm white 3000K 3SDCM

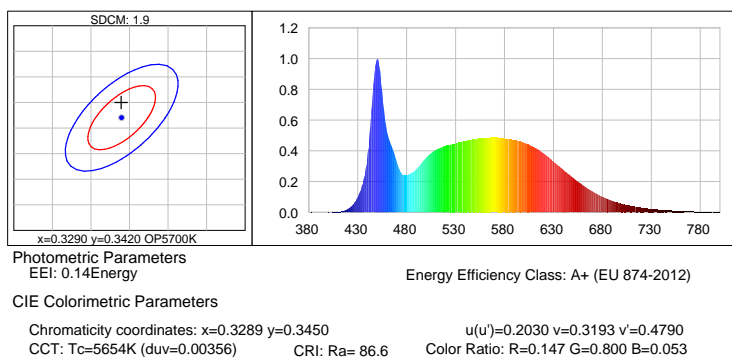


CIE Colorimetric Parameters
Chromaticity coordinates: $x=0.4318$ $y=0.4026$ $u(u')=0.2479$ $v=0.3467$ $v'=0.5200$
CCT: $T_c=3075K$ ($duv=0.00012$) CRI: $R_a=84.9$ Color Ratio: $R=0.229$ $G=0.739$ $B=0.032$

Neutral white 4000K 3SDCM

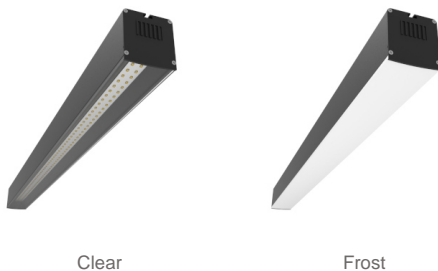


Cool white 5700K 3SDCM



Options

Cover type



XXYYZZ - The last six digits are additional options.

XX - Fixture body finishing.



Natural Aluminum
XX=01

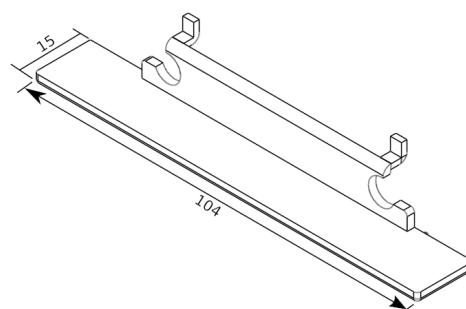
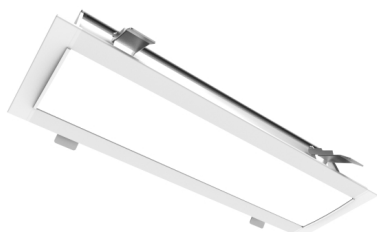


White Aluminum
XX=02



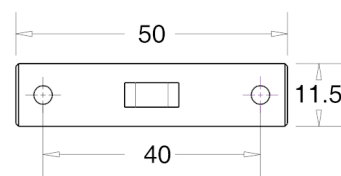
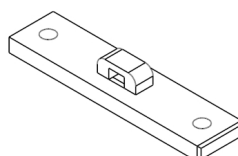
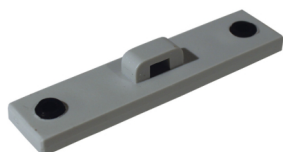
Black Aluminum
XX=04

Accessories option



Unit of measurement: mm
Views

Cod: Grey:8400037206 White:8400037106 Black:8400037306



Unit of measurement: mm
Arex Union

Cod: Grey:8400037205 White:8400037105 Black:8400037305