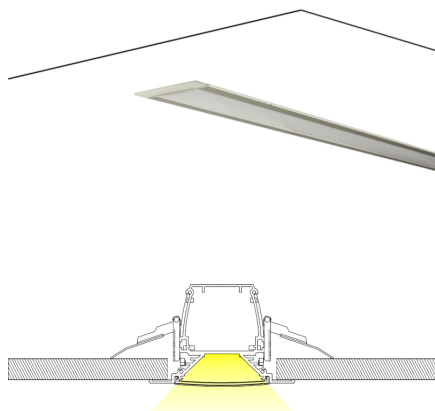


## Description



The new range of the AREMEco HE Fixtures aims to replace the traditional T8 and T5 fixtures with one or two lamps.

Color temperature tolerance of 3 SDCM MacAdam ellipses, defined by ANSI C78.377:2008

Energy Efficiency Class: A++ in clear polycarbonate and A+ in frost polycarbonate.

Above 50% of predicted savings.

Different design possibilities.

Option with DALI communication system.

Don't send ultraviolet or infrared radiation and is a friendly eco lamp because it's repairable and don't contains mercury, neither other dangerous substance.

## Technical Features:

Power source	198 to 264V AC 50/60Hz (Class I constant current internal power supply)
Power	16 ± 1W
Power Factor	> 0.95
LED Current	470 mA
LED Voltage	29.5 ± 3 V DC
Useful Lifetime	60.000 hours (L70 - 85°C @ 65%H) *
Beam Angle	Clear: 105 ± 5° Frost: 115 ± 5° *
Field Angle	Clear: 130 ± 5° Frost: 165 ± 5° ***
Nr. of LEDs	80 - SMD
Weight	1.3 Kg
Working Temp.	-20 to 40 °C
Tc	55°C (maximum case temperature)
Lumen maintenance	LM80 (Report available: <a href="#">LM-80 9000hrs</a> )
Certificate	CE / RoHs
Isolation	Class I

\*Luminosity depreciation based on L70.

\*\*Beam angle: 50% of maximum lum.

\*\*\*Field angle: 10% of maximum lum.

## Light Technical Data:

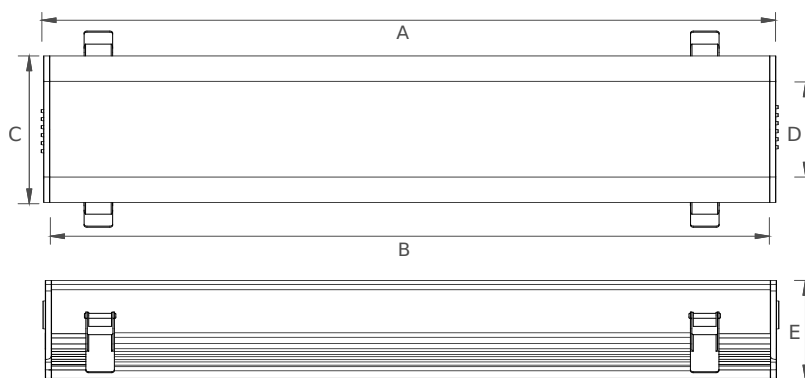
Reference	Description	Lum. flux (Lm)*	Eff. (Lm/W)	Color Temp. (K)**	Color	CRI >	Lens type
35050032121 <a href="#">XXYYZZ</a>	LLED AREM 500 WW303 HE Eco Clear	1544	97	3045 ±84	Warm	80	Clear
35050034121 <a href="#">XXYYZZ</a>	LLED AREM 500 NW403 HE Eco Clear	1615	101	3986 ±144	Neutral	80	Clear
35050036121 <a href="#">XXYYZZ</a>	LLED AREM 500 CW573 HE Eco Clear	1615	101	5668 ±207	Cool	80	Clear
35050032122 <a href="#">XXYYZZ</a>	LLED AREM 500 WW303 HE Eco Frost	1152	72	3045 ±84	Warm	80	Frost
35050034122 <a href="#">XXYYZZ</a>	LLED AREM 500 NW403 HE Eco Frost	1205	75	3986 ±144	Neutral	80	Frost
35050036122 <a href="#">XXYYZZ</a>	LLED AREM 500 CW573 HE Eco Frost	1205	75	5668 ±207	Cool	80	Frost

\* Luminous flux ± 7.5%

\* Other color temperatures available upon request



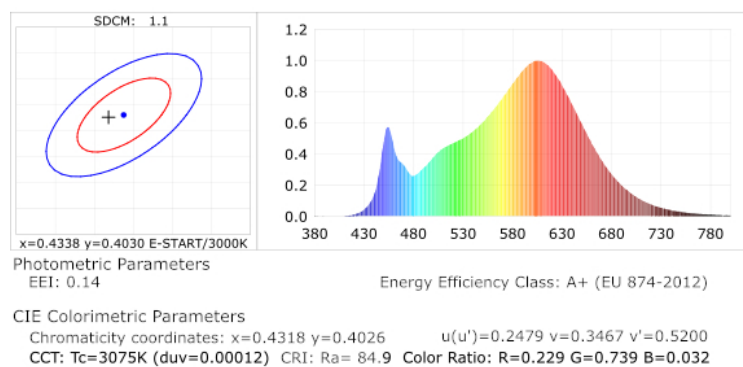
## Dimensions



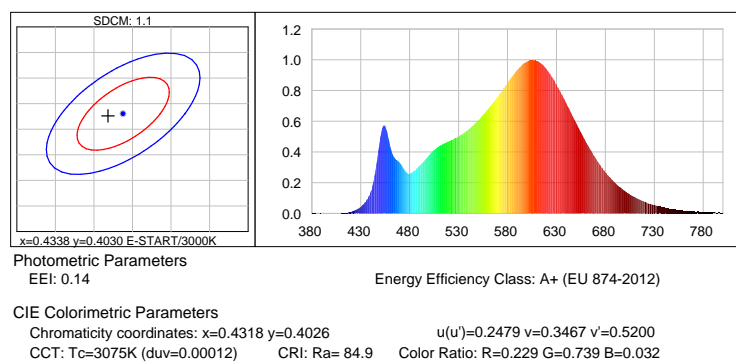
A (mm)	B (mm)	C (mm)	D (mm)	E (mm)
538	508	104	72	70

## Photometric Data

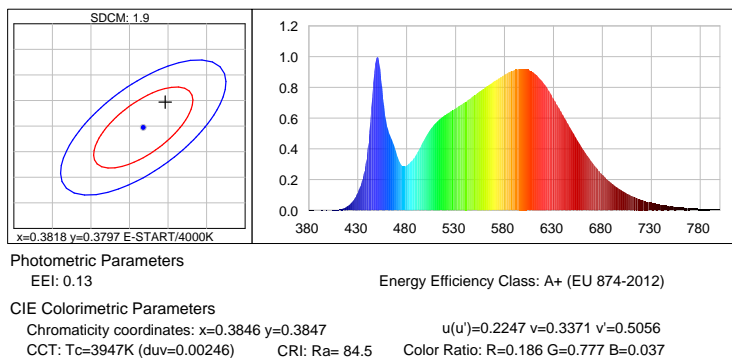
### HE LED warm white 3000K 3SDCM



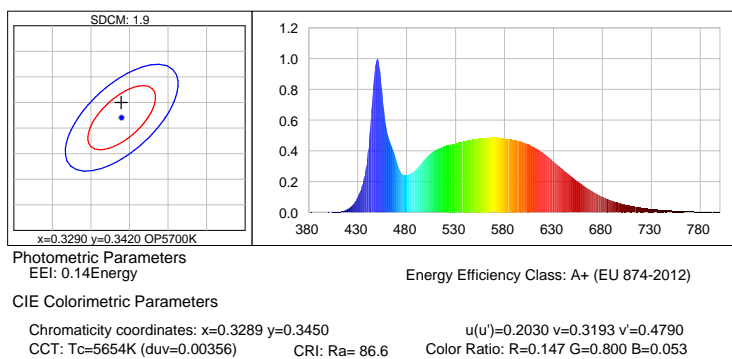
### Warm white 3000K 3SDCM



## Neutral white 4000K 3SDCM

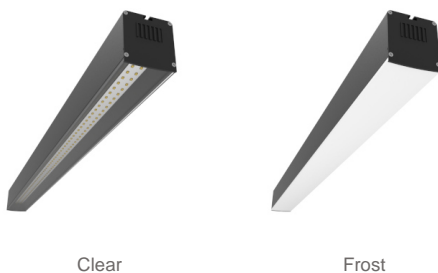


## Cool white 5700K 3SDCM



## Options

### Cover type



**XXYYZZ** - The last six digits are additional options.

XX - Fixture body finishing.



Natural Aluminum  
XX=01

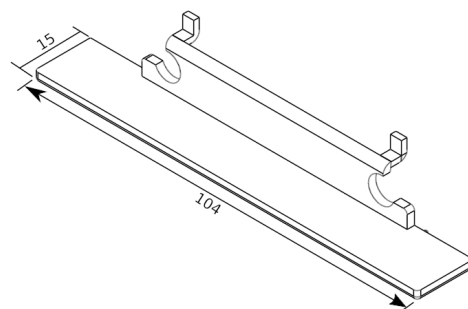
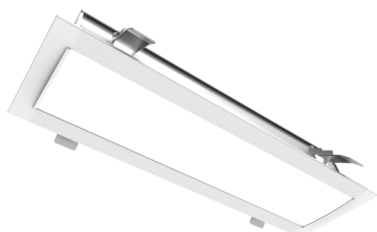


White Aluminum  
XX=02



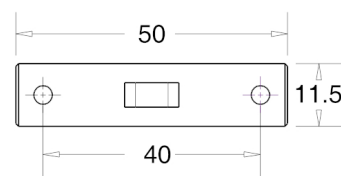
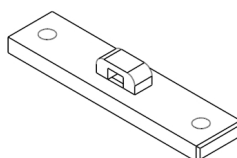
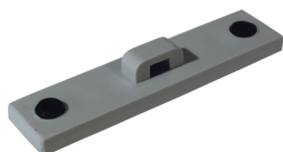
Black Aluminum  
XX=04

## Accessories option



Unit of measurement: mm  
Views

Cod: Grey:8400037206 White:8400037106 Black:8400037306



Unit of measurement: mm  
Arex Union

Cod: Grey:8400037205 White:8400037105 Black:8400037305