



## Description

The new range of the AREX Eco<sup>2</sup> HE Fixtures aims to replace the traditional T8 and T5 fixtures with one or two lamps.

Color temperature tolerance of 3 SDCM MacAdam ellipses, defined by ANSI C78.377:2008

Energy Efficiency Class: A++ in clear polycarbonate and A+ in frost polycarbonate.

Above 50% of predicted savings.

Different design possibilities.

Option with DALI communication system.

Don't send ultraviolet or infrared radiation and is a friendly eco lamp because it's repairable and don't contains mercury, neither other dangerous substance.

## Technical Features:

Power source	198 to 264V AC 50/60Hz (Class I constant current internal power supply)
Power	20 ± 1W
Power Factor	> 0.95
LED Current	600 mA
LED Voltage	29.5 ± 3 V DC
Useful Lifetime	60.000 hours (L70 - 85°C @ 65%H) *
Beam Angle	Clear: 120 ± 5° **
Field Angle	Clear: 125 ± 5° **
Nr. of LEDs	100 - SMD
Weight	2.4 Kg
Working Temp.	-20 to 40 °C
Tc	55°C (maximum case temperature)
Lumen maintenance	LM80 (Report available: <a href="#">LM-80 9000hrs</a> )
Certificate	CE / RoHs
Isolation	Class I

\*Luminosity depreciation based on L70.

\*\*Beam angle: 50% of maximum lum.

\*\*\*Field angle: 10% of maximum lum.

## Light Technical Data:

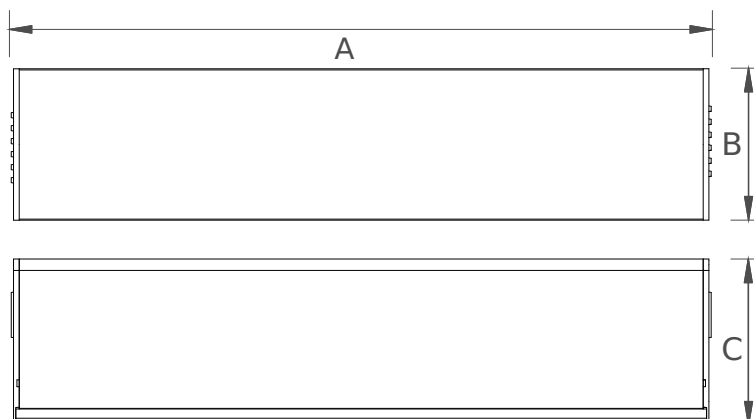
Reference	Description	Lum. flux (Lm)*	Eff. (Lm/W)	Color Temp. (K)**	Color	CRI >	Lens type
36125032131 <a href="#">XXYYZZ</a>	LLED AREX 1250 WW303 HE Eco <sup>2</sup> Clear	1971	99	3045 ±84	Warm	80	Clear
36125034131 <a href="#">XXYYZZ</a>	LLED AREX 1250 NW403 HE Eco <sup>2</sup> Clear	2062	103	3986 ±144	Neutral	80	Clear
36125036131 <a href="#">XXYYZZ</a>	LLED AREX 1250 CW573 HE Eco <sup>2</sup> Clear	2062	103	5668 ±207	Cool	80	Clear
36125032132 <a href="#">XXYYZZ</a>	LLED AREX 1250 WW303 HE Eco <sup>2</sup> Frost	1470	74	3045 ±84	Warm	80	Frost
36125034132 <a href="#">XXYYZZ</a>	LLED AREX 1250 NW403 HE Eco <sup>2</sup> Frost	1538	77	3986 ±144	Neutral	80	Frost
36125036132 <a href="#">XXYYZZ</a>	LLED AREX 1250 CW573 HE Eco <sup>2</sup> Frost	1538	77	5668 ±207	Cool	80	Frost

\* Luminous flux ± 7.5%

\* Other color temperatures available upon request



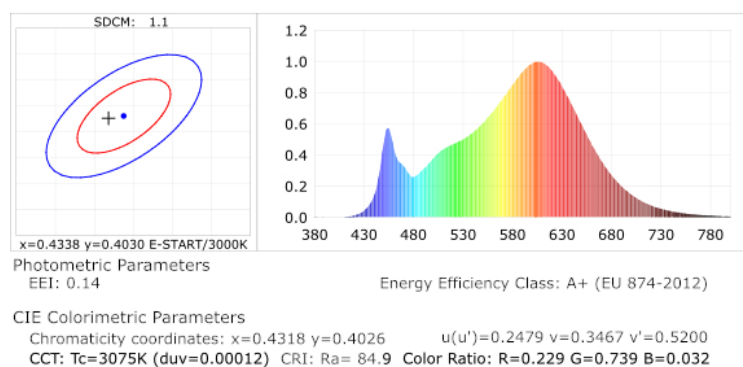
## Dimensions



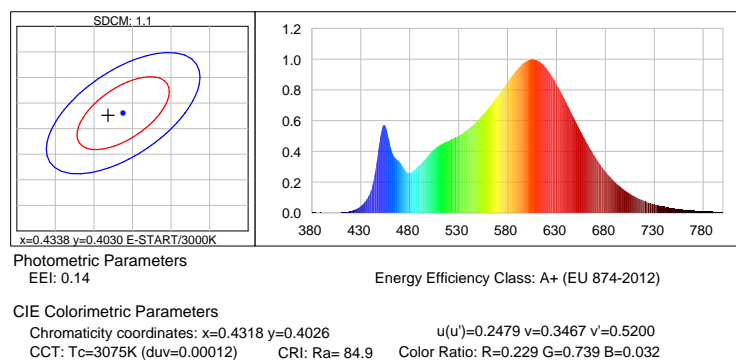
A (mm)	B (mm)	C (mm)
1258	74	66

## Photometric Data

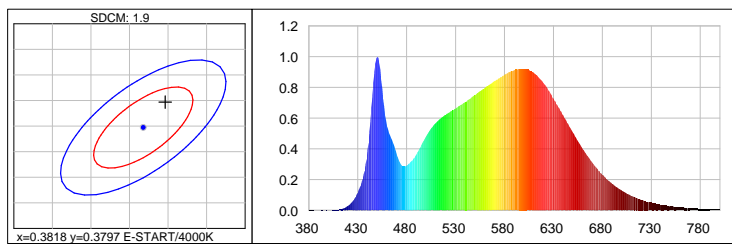
### HE LED warm white 3000K 3SDCM



### Warm white 3000K 3SDCM



## Neutral white 4000K 3SDCM



### Photometric Parameters

EEL: 0.13

Energy Efficiency Class: A+ (EU 874-2012)

### CIE Colorimetric Parameters

Chromaticity coordinates:  $x=0.3846$   $y=0.3847$

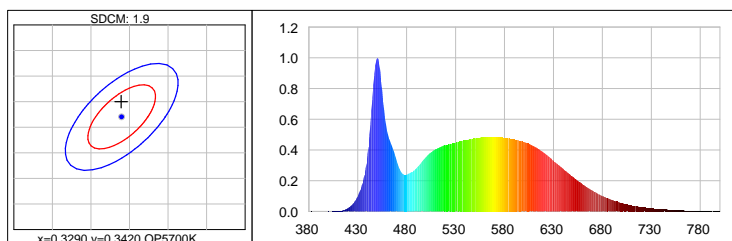
$u(u')=0.2247$   $v=0.3371$   $v'=0.5056$

CCT:  $T_c=3947K$  ( $duv=0.00246$ )

CRI:  $R_a=84.5$

Color Ratio:  $R=0.186$   $G=0.777$   $B=0.037$

## Cool white 5700K 3SDCM



### Photometric Parameters

EEL: 0.14Energy

Energy Efficiency Class: A+ (EU 874-2012)

### CIE Colorimetric Parameters

Chromaticity coordinates:  $x=0.3289$   $y=0.3450$

$u(u')=0.2030$   $v=0.3193$   $v'=0.4790$

CCT:  $T_c=5654K$  ( $duv=0.00356$ )

CRI:  $R_a=86.6$

Color Ratio:  $R=0.147$   $G=0.800$   $B=0.053$

## Options

### Cover type



Clear



Frost

**XXYYZZ** - The last six digits are additional options.

XX - Fixture body finishing.



Natural Aluminum  
XX=01

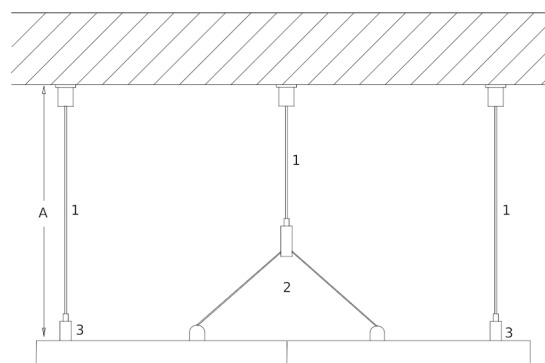
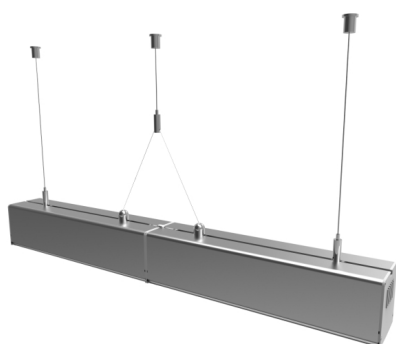


White Aluminum  
XX=02

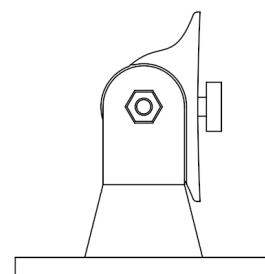
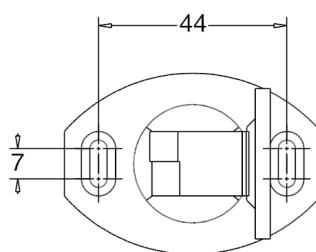


Black Aluminum  
XX=04

### Accessories option

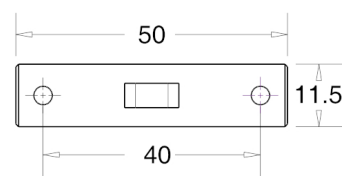
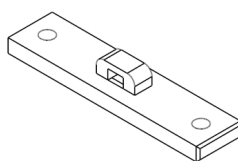
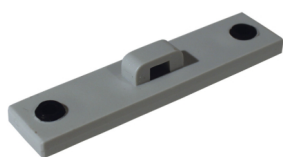


- [1] - Steel Cable Cod: [A] 200cm:8400035143 || [A] 300cm:8400035144  
[2] - Double terminal for steel cable(2xM5/6 with base) Cod:8400035141  
[3] - Terminal(M5/6 with Base) Cod:8400035140



Unit of measurement: mm  
Holder

Cod: Grey:8400037202 White:8400037102 Black:8400037302



Unit of measurement: mm  
Arex Union

Cod: Grey:8400037205 White:8400037105 Black:8400037305