



Description

The new range of the AREX Eco HE Fixtures aims to replace the traditional T8 and T5 fixtures with one or two lamps.

Color temperature tolerance of 3 SDCM MacAdam ellipses, defined by ANSI C78.377:2008

Energy Efficiency Class: A++ in clear polycarbonate and A+ in frost polycarbonate.

Above 50% of predicted savings.

Different design possibilities.

Option with DALI communication system.

Don't send ultraviolet or infrared radiation and is a friendly eco lamp because it's repairable and don't contains mercury, neither other dangerous substance.

Technical Features:

| | |
|-------------------|---|
| Power source | 198 to 264V AC 50/60Hz (Class I constant current internal power supply) |
| Power | 36 ± 2W |
| Power Factor | > 0.95 |
| LED Current | 1080 mA |
| LED Voltage | 29.5 ± 3 V DC |
| Useful Lifetime | 60.000 hours (L70 - 85°C @ 65%H) * |
| Beam Angle | Clear: 105 ± 5° Frost: 115 ± 5°** |
| Field Angle | Clear: 130 ± 5° Frost: 165 ± 5°*** |
| Nr. of LEDs | 180 - SMD |
| Weight | 2.2 Kg |
| Working Temp. | -20 to 40 °C |
| Tc | 55°C (maximum case temperature) |
| Lumen maintenance | LM80 (Report available: LM-80 9000hrs) |
| Certificate | CE / RoHs |
| Isolation | Class I |

*Luminosity depreciation based on L70.

**Beam angle: 50% of maximum lum.

***Field angle: 10% of maximum lum.

Light Technical Data:

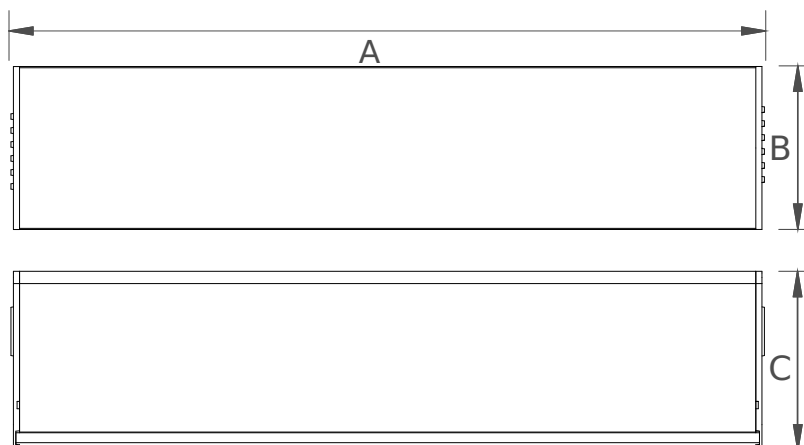
| Reference | Description | Lum. flux (Lm)* | Eff. (Lm/W) | Color Temp. (K)** | Color | CRI > | Lens type |
|------------------------------------|-----------------------------------|-----------------|-------------|-------------------|---------|-------|-----------|
| 36112532121 XXYYZZ | LLED AREX 1125 WW303 HE Eco Clear | 3548 | 99 | 3045 ±84 | Warm | 80 | Clear |
| 36112534121 XXYYZZ | LLED AREX 1125 NW403 HE Eco Clear | 3712 | 103 | 3986 ±144 | Neutral | 80 | Clear |
| 36112536121 XXYYZZ | LLED AREX 1125 CW573 HE Eco Clear | 3712 | 103 | 5668 ±207 | Cool | 80 | Clear |
| 36112532122 XXYYZZ | LLED AREX 1125 WW303 HE Eco Frost | 2647 | 74 | 3045 ±84 | Warm | 80 | Frost |
| 36112534122 XXYYZZ | LLED AREX 1125 NW403 HE Eco Frost | 2769 | 77 | 3986 ±144 | Neutral | 80 | Frost |
| 36112536122 XXYYZZ | LLED AREX 1125 CW573 HE Eco Frost | 2769 | 77 | 5668 ±207 | Cool | 80 | Frost |

* Luminous flux ± 7.5%

* Other color temperatures available upon request



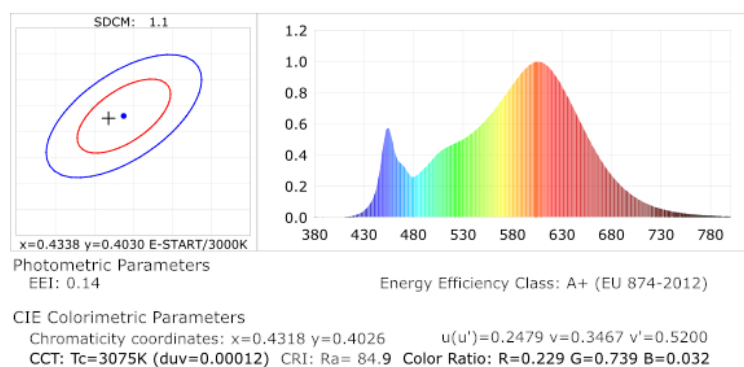
Dimensions



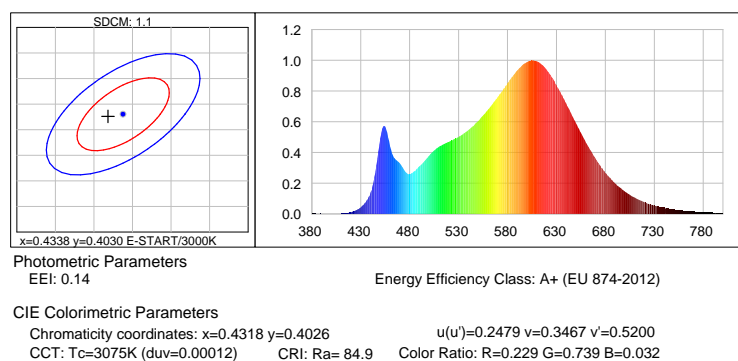
| A (mm) | B (mm) | C (mm) |
|--------|--------|--------|
| 1133 | 74 | 66 |

Photometric Data

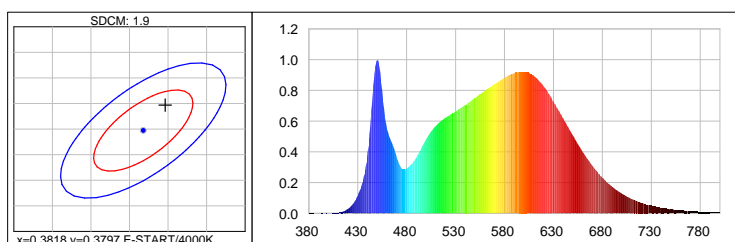
HE LED warm white 3000K 3SDCM



Warm white 3000K 3SDCM



Neutral white 4000K 3SDCM



Photometric Parameters

EEI: 0.13

Energy Efficiency Class: A+ (EU 874-2012)

CIE Colorimetric Parameters

Chromaticity coordinates: x=0.3846 y=0.3847

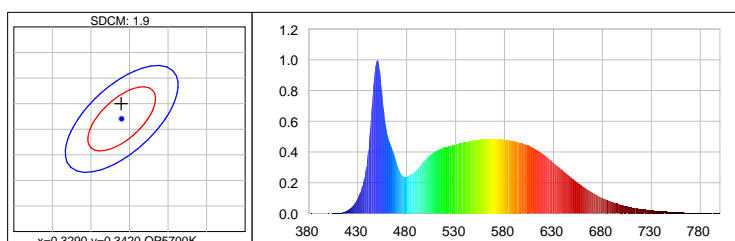
u(u')=0.2247 v=0.3371 v'=0.5056

CCT: Tc=3947K (duv=0.00246)

CRI: Ra= 84.5

Color Ratio: R=0.186 G=0.777 B=0.037

Cool white 5700K 3SDCM



Photometric Parameters

EEI: 0.14Energy

Energy Efficiency Class: A+ (EU 874-2012)

CIE Colorimetric Parameters

Chromaticity coordinates: x=0.3289 y=0.3450

u(u')=0.2030 v=0.3193 v'=0.4790

CCT: Tc=5654K (duv=0.00356)

CRI: Ra= 86.6

Color Ratio: R=0.147 G=0.800 B=0.053

Options

Cover type



Clear



Frost

XXYYZZ - The last six digits are additional options.

XX - Fixture body finishing.



Natural Aluminum
XX=01

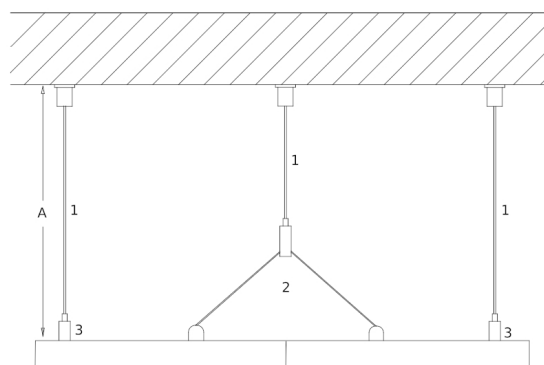
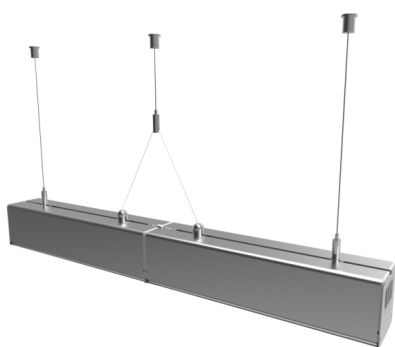


White Aluminum
XX=02

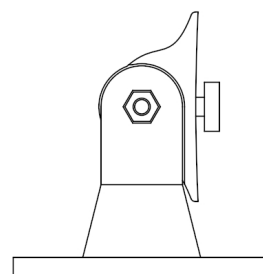
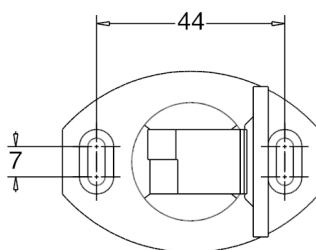


Black Aluminum
XX=04

Accessories option

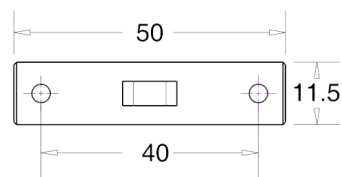
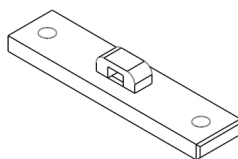


- [1] - Steel Cable Cod: [A] 200cm:8400035143 || [A] 300cm:8400035144
[2] - Double terminal for steel cable(2xM5/6 with base) Cod:8400035141
[3] - Terminal(M5/6 with Base) Cod:8400035140



Unit of measurement: mm
Holder

Cod: Grey:8400037202 White:8400037102 Black:8400037302



Unit of measurement: mm
 Arex Union
 Cod: Grey:8400037205 White:8400037105 Black:8400037305