



Description

The new range of the AREX Eco HE Fixtures aims to replace the traditional T8 and T5 fixtures with one or two lamps.

Color temperature tolerance of 3 SDCM MacAdam ellipses, defined by ANSI C78.377:2008

Energy Efficiency Class: A++ in clear polycarbonate and A+ in frost polycarbonate.

Above 50% of predicted savings.

Different design possibilities.

Option with DALI communication system.

Don't send ultraviolet or infrared radiation and is a friendly eco lamp because it's repairable and don't contains mercury, neither other dangerous substance.

Technical Features:

Power source	198 to 264V AC 50/60Hz (Class I constant current internal power supply)
Power	47 ± 2W
Power Factor	> 0.95
LED Current	1400 mA
LED Voltage	29.5 ± 3 V DC
Useful Lifetime	60.000 hours (L70 - 85°C @ 65%H) *
Beam Angle	Clear: 105 ± 5° Frost: 115 ± 5°**
Field Angle	Clear: 130 ± 5° Frost: 165 ± 5°***
Nr. of LEDs	240 - SMD
Weight	2.9 Kg
Working Temp.	-20 to 40 °C
Tc	55°C (maximum case temperature)
Lumen maintenance	LM80 (Report available: LM-80 9000hrs)
Certificate	CE / RoHs
Isolation	Class I

*Luminosity depreciation based on L70.

**Beam angle: 50% of maximum lum.

***Field angle: 10% of maximum lum.

Light Technical Data:

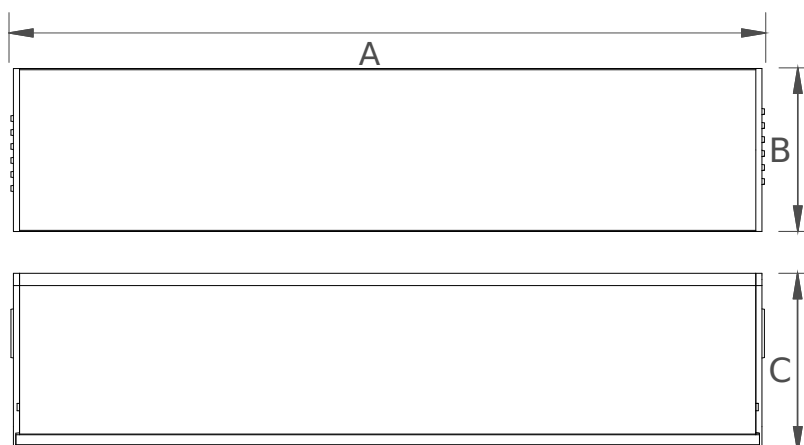
Reference	Description	Lum. flux (Lm)*	Eff. (Lm/W)	Color Temp. (K)**	Color	CRI >	Lens type
36150032121 XXYYZZ	LLED AREX 1500 WW303 HE Eco Clear	4600	98	3045 ±84	Warm	80	Clear
36150034121 XXYYZZ	LLED AREX 1500 NW403 HE Eco Clear	4812	102	3986 ±144	Neutral	80	Clear
36150036121 XXYYZZ	LLED AREX 1500 CW573 HE Eco Clear	4812	102	5668 ±207	Cool	80	Clear
36150032122 XXYYZZ	LLED AREX 1500 WW303 HE Eco Frost	3431	73	3045 ±84	Warm	80	Frost
36150034122 XXYYZZ	LLED AREX 1500 NW403 HE Eco Frost	3589	76	3986 ±144	Neutral	80	Frost
36150036122 XXYYZZ	LLED AREX 1500 CW573 HE Eco Frost	3589	76	5668 ±207	Cool	80	Frost

* Luminous flux ± 7.5%

* Other color temperatures available upon request



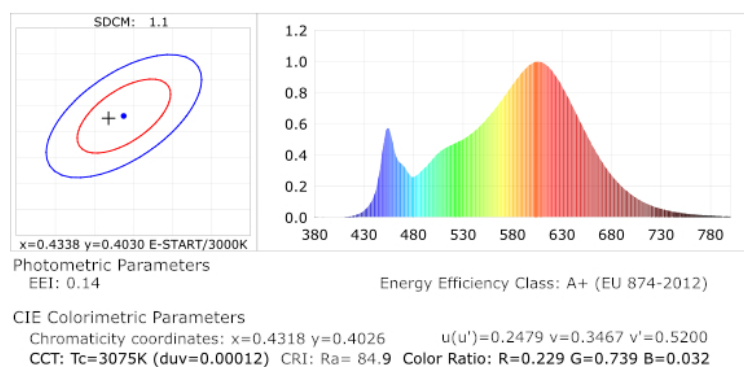
Dimensions



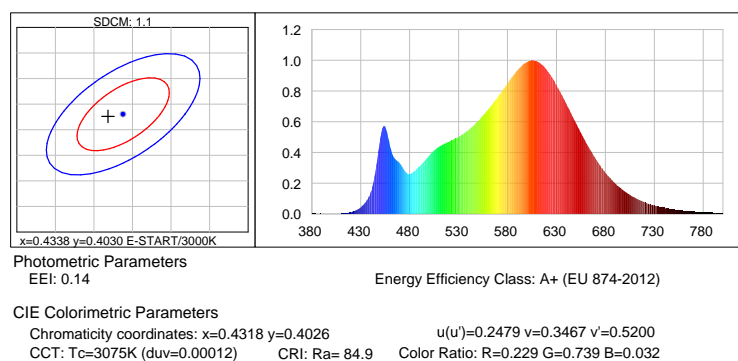
A (mm)	B (mm)	C (mm)
1508	74	66

Photometric Data

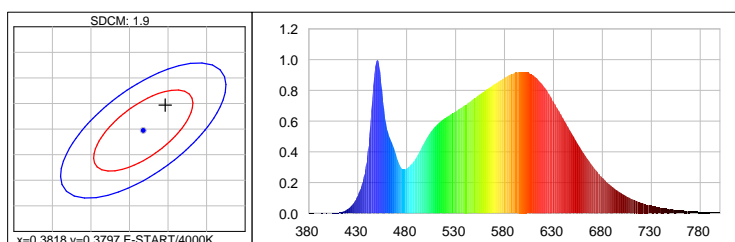
HE LED warm white 3000K 3SDCM



Warm white 3000K 3SDCM



Neutral white 4000K 3SDCM



Photometric Parameters

EEL: 0.13

Energy Efficiency Class: A+ (EU 874-2012)

CIE Colorimetric Parameters

Chromaticity coordinates: $x=0.3846$ $y=0.3847$

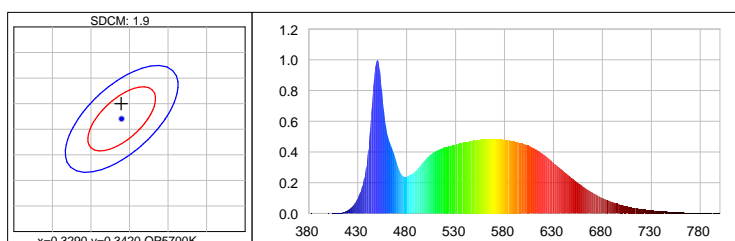
$u(u')=0.2247$ $v=0.3371$ $v'=0.5056$

CCT: $T_c=3947K$ ($duv=0.00246$)

CRI: $R_a=84.5$

Color Ratio: $R=0.186$ $G=0.777$ $B=0.037$

Cool white 5700K 3SDCM



Photometric Parameters

EEL: 0.14Energy

Energy Efficiency Class: A+ (EU 874-2012)

CIE Colorimetric Parameters

Chromaticity coordinates: $x=0.3289$ $y=0.3450$

$u(u')=0.2030$ $v=0.3193$ $v'=0.4790$

CCT: $T_c=5654K$ ($duv=0.00356$)

CRI: $R_a=86.6$

Color Ratio: $R=0.147$ $G=0.800$ $B=0.053$

Options

Cover type



Clear



Frost

XXYYZZ - The last six digits are additional options.

XX - Fixture body finishing.



Natural Aluminum
XX=01

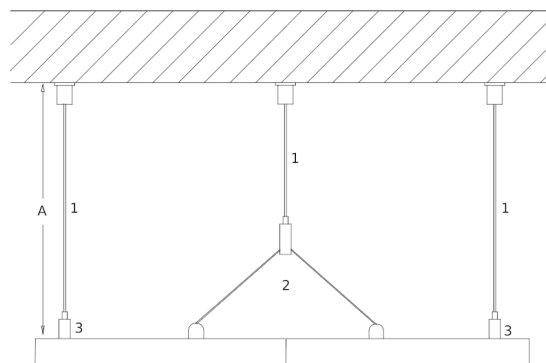
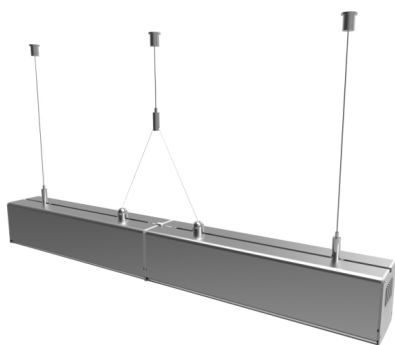


White Aluminum
XX=02

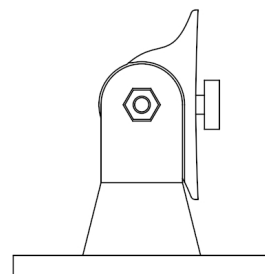
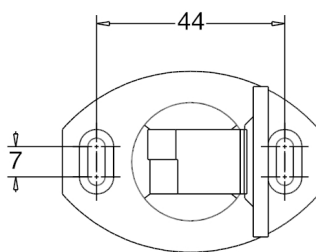


Black Aluminum
XX=04

Accessories option



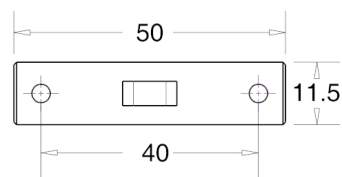
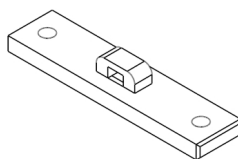
- [1] - Steel Cable Cod: [A] 200cm:8400035143 || [A] 300cm:8400035144
[2] - Double terminal for steel cable(2xM5/6 with base) Cod:8400035141
[3] - Terminal(M5/6 with Base) Cod:8400035140



Unit of measurement: mm

Holder

Cod: Grey:8400037202 White:8400037102 Black:8400037302



Unit of measurement: mm
 Arex Union
 Cod: Grey:8400037205 White:8400037105 Black:8400037305