



## Description

The new range of the AREX HE Fixtures aims to replace the traditional T8 and T5 fixtures with one or two lamps.

Color temperature tolerance of 3 SDCM MacAdam ellipses, defined by ANSI C78.377:2008

Energy Efficiency Class: A++ in clear polycarbonate and A+ in frost polycarbonate.

Above 50% of predicted savings.

Different design possibilities.

Option with DALI communication system.

Don't send ultraviolet or infrared radiation and is a friendly eco lamp because it's repairable and don't contains mercury, neither other dangerous substance.

## Technical Features:

Power source	198 to 264V AC 50/60Hz (Class I constant current internal power supply)
Power	36 ± 2W
Power Factor	> 0.95
LED Current	1080 mA
LED Voltage	29.5 ± 3 V DC
Useful Lifetime	60.000 hours (L70 - 85°C @ 65%H) *
Beam Angle	Clear: 105 ± 5° Frost: 115 ± 5°**
Field Angle	Clear: 130 ± 5° Frost: 165 ± 5° ***
Nr. of LEDs	210 - SMD
Weight	1.8 Kg
Working Temp.	-20 to 40 °C
Tc	55°C (maximum case temperature)
Lumen maintenance	LM80 (Report available: <a href="#">LM-80 9000hrs</a> )
Certificate	CE / RoHs
Isolation	Class I

\*Luminosity depreciation based on L70.

\*\*Beam angle: 50% of maximum lum.

\*\*\*Field angle: 10% of maximum lum.

## Light Technical Data:

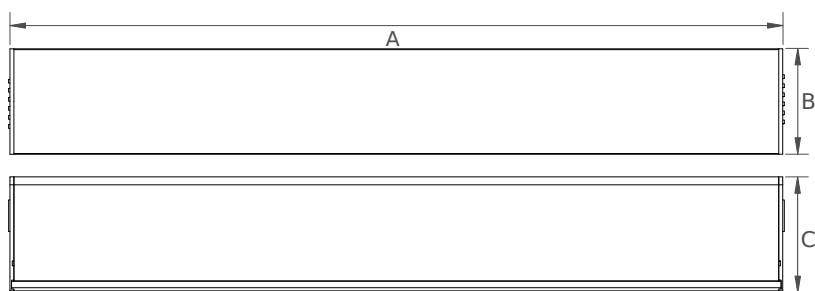
Reference	Description	Lum. flux (Lm)*	Eff. (Lm/W)	Color Temp. (K)**	Color	CRI >	Lens type
36087532111 <a href="#">XXYYZZ</a>	LLED AREX 875 WW303 HE Clear	3548	99	3045 ±84	Warm	80	Clear
36087534111 <a href="#">XXYYZZ</a>	LLED AREX 875 NW403 HE Clear	3712	103	3986 ±144	Neutral	80	Clear
36087536111 <a href="#">XXYYZZ</a>	LLED AREX 875 CW573 HE Clear	3712	103	5668 ±207	Cool	80	Clear
36087532112 <a href="#">XXYYZZ</a>	LLED AREX 875 WW303 HE Frost	2647	74	3045 ±84	Warm	80	Frost
36087534112 <a href="#">XXYYZZ</a>	LLED AREX 875 NW403 HE Frost	2769	77	3986 ±144	Neutral	80	Frost
36087536112 <a href="#">XXYYZZ</a>	LLED AREX 875 CW573 HE Frost	2769	77	5668 ±207	Cool	80	Frost

\* Luminous flux ± 7.5%

\* Other color temperatures available upon request



## Dimensions



A (mm)	B (mm)	C (mm)
883	74	66

## Options

### Cover type



Clear



Frost

**XXYYZZ** - The last six digits are additional options.

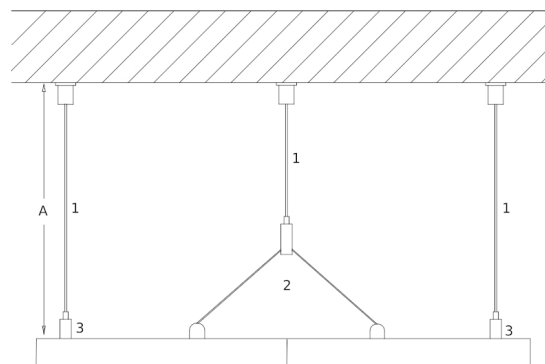
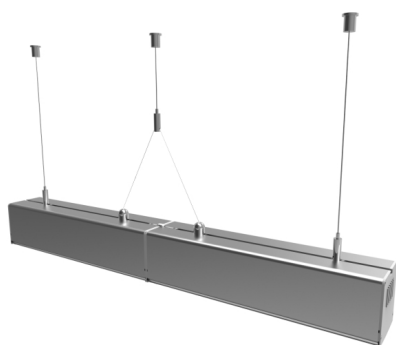
**XX** - Fixture body finishing.


Natural Aluminum  
XX=01

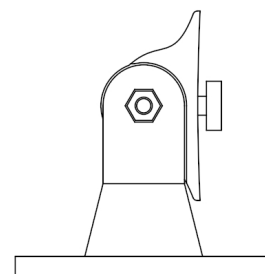
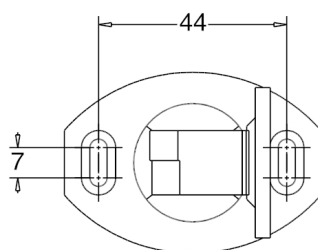
White Aluminum  
XX=02

Black Aluminum  
XX=04

## Acessories option

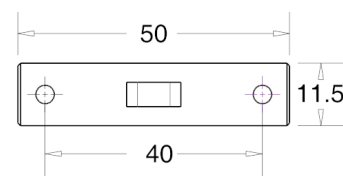
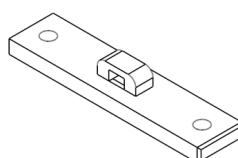
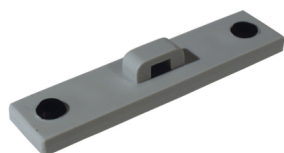


- [1] - Steel Cable Cod: [A] 200cm:8400035143 || [A] 300cm:8400035144  
 [2] - Double terminal for steel cable(2xM5/6 with base) Cod:8400035141  
 [3] - Terminal(M5/6 with Base) Cod:8400035140



Unit of measurement: mm  
 Holder

Cod: Grey:8400037202 White:8400037102 Black:8400037302



Unit of measurement: mm  
 Arex Union

Cod: Grey:8400037205 White:8400037105 Black:8400037305