



Description

The Pink LED Bars HE, aims to increase lighting distribution on showcases/display cases of fresh products, especially meat and create a new lighting concept and obtain electrical energy consumption reduction.

The LEDs meet the Eye safety standard EN62471 classified in RG-1.

The polycarbonate bar lens Trirex 3030IR, meets the food safety standards for FDA 21CFR 177.1580 and the European standard (EU) No. 10/2011.

Huge flexibility size, (75-2250mm) allows size and lighting composition for each project.

Easy to install, allows the use of single bars for each sizes, or join several continuous bars.

It creates a new, cleaner and more effective lighting style, allowing a new decor design of the lit areas.

An higher lifetime is achieved comparing with traditional fluorescent lamps. There's no ultraviolet or infrared radiation and it is environmental friendly because it is repairable and does not contain mercury or any other dangerous product.

Technical Features:

| | |
|-------------------|---|
| Power source | Class II constant voltage external LED drive power supply |
| Voltage | 24 ± 3 V DC |
| Current | 42 mA |
| Power | 1 ± 0.5 W |
| Useful Lifetime | 60.000 hours (L70 - 55°C @ 65%H) * |
| Beam angle | 120 ± 5° ** |
| Field angle | Clear: 135 ± 5° Frost: 195 ± 5° *** |
| Nr of LEDs | 12 - SMD |
| Working Temp. | -20 to 40 °C |
| Isolation | Class III |
| Protection degree | IP42 |
| Lumen maintenance | LM80 |
| Certificate | CE / RoHs |

*Luminosity depreciation based on L70.

**Beam angle: 50% of maximum lum.

***Field angle: 10% of maximum lum.

Light Technical Data:

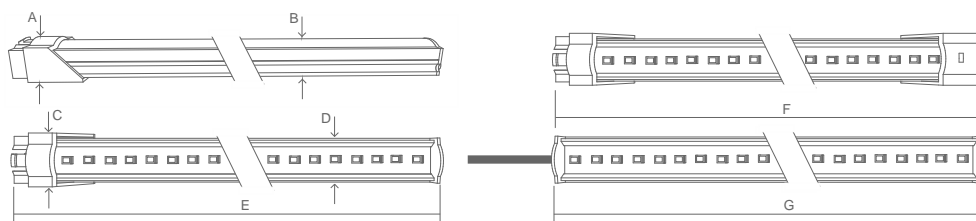
| Reference | Description | Lum. flux (Lm)* | Eff. (Lm/W) | Color Temp. (K)** | Color | CRI > | Lens type |
|------------------------------------|----------------------------------|-----------------|-------------|-------------------|-------|-------|-----------|
| 11007591111 XXYYZZ | LLED Barra 24V 10 Talho HE Clear | 104 | 104 | PINK | - | 80 | Clear |
| 11007591112 XXYYZZ | LLED Barra 24V 10 Talho HE Frost | 89 | 89 | PINK | - | 80 | Frost |

* Luminous flux ± 7.5%

* Other color temperatures available upon request



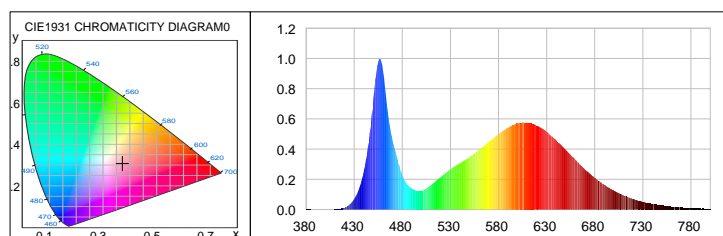
Dimensions



| A (mm) | B (mm) | C (mm) | D (mm) | E (mm) | F (mm) | G (mm) |
|--------|--------|--------|--------|--------|--------|--------|
| 15 | 12 | 20 | 17 | 94 | 110 | 79 |

Photometric Data

Pink



Photometric Parameters

EEI: 0.18 Energy Efficiency Class: A (EU 874-2012)

CIE Colorimetric Parameters

Chromaticity coordinates: $x=0.3725$ $y=0.3078$ $u(u')=0.2504$ $v=0.3105$ $v'=0.4657$

CCT: $T_c=3570K$ ($duv=-0.03371$)

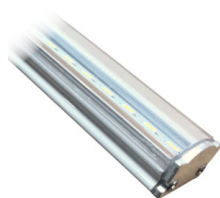
Color Ratio: $R=0.237$ $G=0.713$ $B=0.050$

CRI: $R_a=84.9$

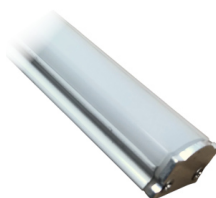
TM30: $R_f=78$, $R_g=101$

Options

Cover type



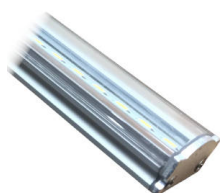
Clear



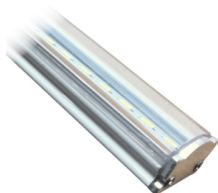
Frost

XXYYZZ - The last six digits are additional options.

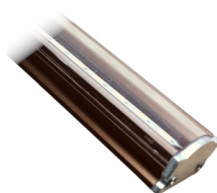
XX - Bar body finishing.



Natural Aluminum
XX=01



White Aluminum
XX=02



Brown Aluminum
XX=03



Polycarbonate
XX=81

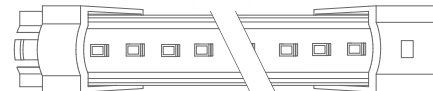
YY - Bar connection.



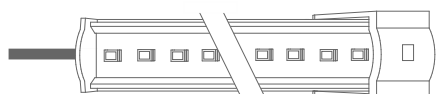
Top Input cable
YY=01



Male connector input - 1C2P
YY=04



Male connector input female connector output -
2C2P
YY=06

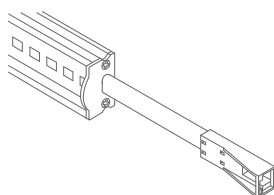


Top Input cable output connector - 1C2P+STopo
YY=08

ZZ - Cable type.



Without connector
ZZ=00



ASQC2 Connector
ZZ=27

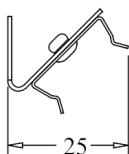
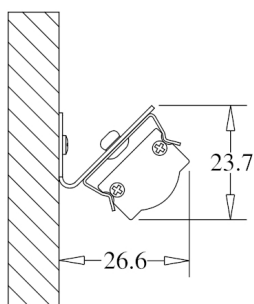


DCJ Connector
ZZ=41

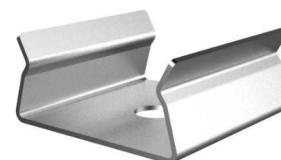
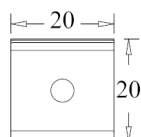
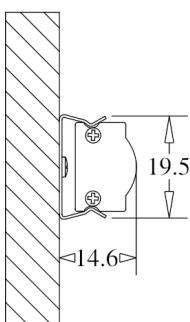


DC24 Connector
ZZ=46

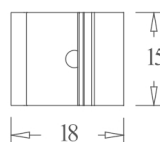
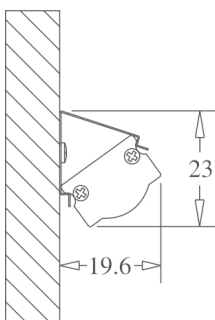
Fixture option



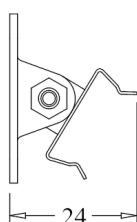
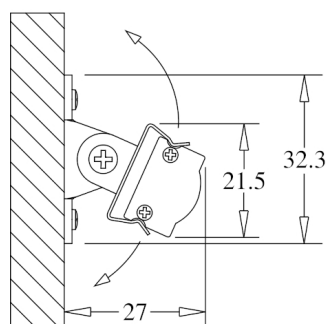
Unit of measurement: mm
180° CLIP W/ 45° BASE Cod: 8400035115



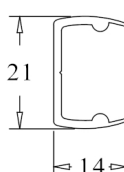
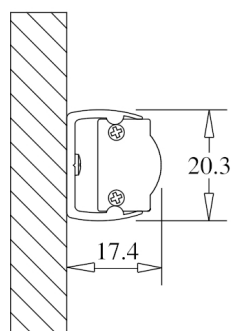
Unit of measurement: mm
180° FIX CLIP Cod: 8400035111



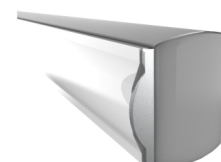
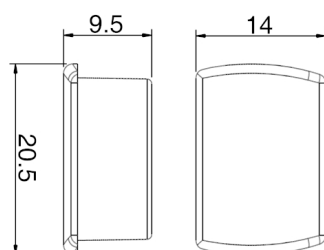
Unit of measurement: mm
45° FIX CLIP Cod: 8400035112



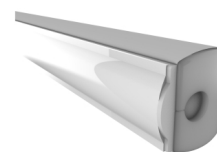
Unit of measurement: mm
ROTATING CLIP Cod: 8400035114



Unit of measurement: mm
180 ° PVC SUPPORT
TYPE: 180°



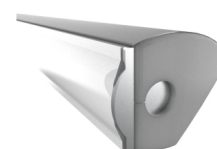
Unit of measurement: mm
180 ° PVC SUPPORT SILICONE CAP WHITHOUT HOLE
COLOR CODES AVAIALE: BR: 8400033071 || CZ: 8400033081



Unit of measurement: mm
180 ° PVC SUPPORT SILICONE CAP WITH HOLE
COLOR CODES AVAILABLE: BR: 8400033072 || CZ: 8400033082



Unit of measurement: mm
45 ° PVC SUPPORT
TYPE: 45°



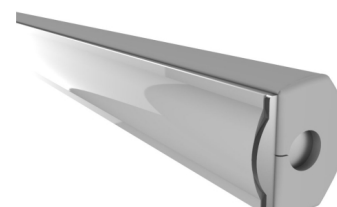
Unit of measurement: mm
45 ° PVC SUPPORT SILICONE CAP WITH HOLE
COLOR CODES AVAILABLE: BR Right: 8400033076 || CZ Right: 8400033086 || BR Left: 8400033075 || CZ Left: 8400033085



Unit of measurement: mm
CORNER PVC SUPPORT
TYPE: CORNER



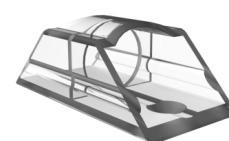
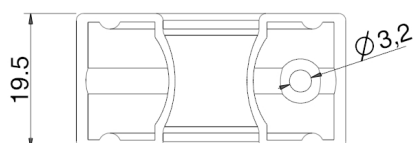
Unit of measurement: mm
CORNER PVC SUPPORT SILICONE CAP
COLOR CODES AVAILABLE: BR: 8400033073 || CZ: 8400033083



Unit of measurement: mm
CORNER PVC SUPPORT SILICONE CAP
COLOR CODES AVAILABLE: BR: 8400033074 || CZ: 8400033084



Unit of measurement: mm
180° FIXATION CLIP - POLYCARBONATE Cod: 8400035117



Unit of measurement: mm
FIXATION SUPPORT - POLYCARBONATE Cod: 8400035119