



Description

The Pink LED Bars HE, aims to increase lighting distribution on showcases/display cases of fresh products, especially meat and create a new lighting concept and obtain electrical energy consumption reduction.

The LEDs meet the Eye safety standard EN62471 classified in RG-1.

The polycarbonate bar lens Trirex 3030IR, meets the food safety standards for FDA 21CFR 177.1580 and the European standard (EU) No. 10/2011.

Huge flexibility size, (75-2250mm) allows size and lighting composition for each project.

Easy to install, allows the use of single bars for each sizes, or join several continuous bars.

It creates a new, cleaner and more effective lighting style, allowing a new decor design of the lit areas.

An higher lifetime is achieved comparing with traditional fluorescent lamps. There's no ultraviolet or infrared radiation and it is environmental friendly because it is repairable and does not contain mercury or any other dangerous product.

Technical Features:

Power source	Class II constant voltage external LED drive power supply
Voltage	24 ± 3 V DC
Current	882 mA
Power	21 ± 0.5 W
Useful Lifetime	60.000 hours (L70 - 55°C @ 65%H) *
Beam angle	120 ± 5° **
Field angle	Clear: 135 ± 5° Frost: 195 ± 5° ***
Nr of LEDs	252 - SMD
Working Temp.	-20 to 40 °C
Isolation	Class III
Protection degree	IP42
Lumen maintenance	LM80
Certificate	CE / RoHs

*Luminosity depreciation based on L70.

**Beam angle: 50% of maximum lum.

***Field angle: 10% of maximum lum.

Light Technical Data:

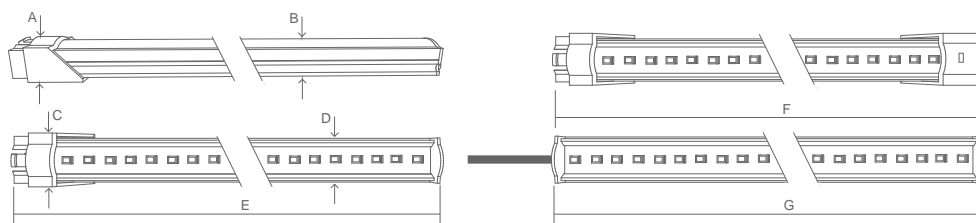
Reference	Description	Lum. flux (Lm)*	Eff. (Lm/W)	Color Temp. (K)**	Color	CRI >	Lens type
11157591111XXXXXX	LLED Barra 24V 160 Talho HE Clear	2185	104	PINK	-	80	Clear
11157591112XXXXXX	LLED Barra 24V 160 Talho HE Frost	1876	89	PINK	-	80	Frost

* Luminous flux ± 7.5%

* Other color temperatures available upon request



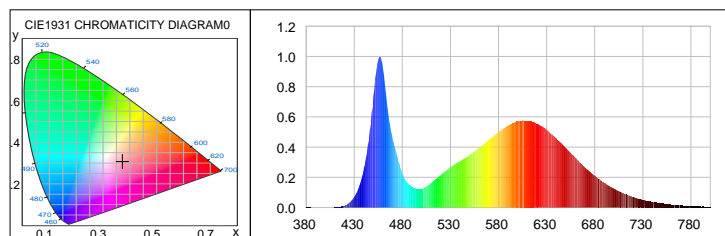
Dimensions



A (mm)	B (mm)	C (mm)	D (mm)	E (mm)	F (mm)	G (mm)
15	12	20	17	1594	1610	1579

Photometric Data

Pink



Photometric Parameters

EEI: 0.18 Energy Efficiency Class: A (EU 874-2012)

CIE Colorimetric Parameters

Chromaticity coordinates: $x=0.3725$ $y=0.3078$ $u(u')=0.2504$ $v=0.3105$ $v'=0.4657$

CCT: $T_c=3570K$ ($duv=-0.03371$)

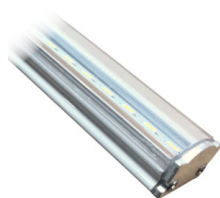
Color Ratio: $R=0.237$ $G=0.713$ $B=0.050$

CRI: $R_a=84.9$

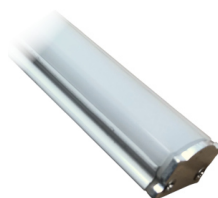
TM30: $R_f=78$, $R_g=101$

Options

Cover type



Clear



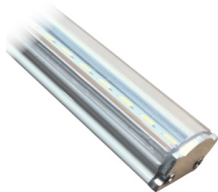
Frost

XXYYZZ - The last six digits are additional options.

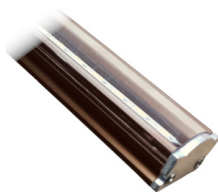
XX - Bar body finishing.



Natural Aluminum
XX=01



White Aluminum
XX=02



Brown Aluminum
XX=03

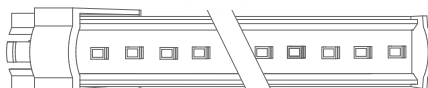


Polycarbonate
XX=81

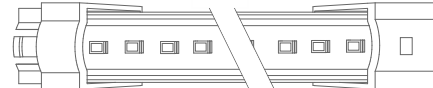
YY - Bar connection.



Top Input cable
YY=01



Male connector input - 1C2P
YY=04

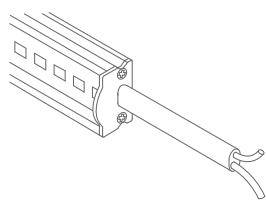


Male connector input female connector output -
2C2P
YY=06

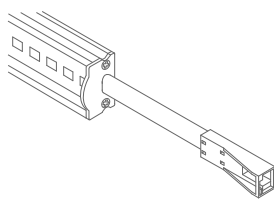


Top Input cable output connector - 1C2P+STopo
YY=08

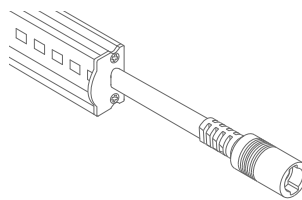
ZZ - Cable type.



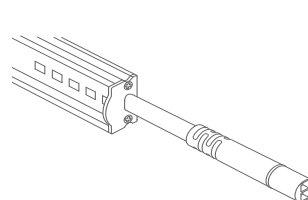
Without connector
ZZ=00



ASQC2 Connector
ZZ=27

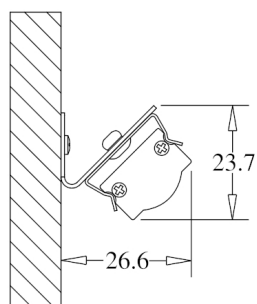


DCJ Connector
ZZ=41

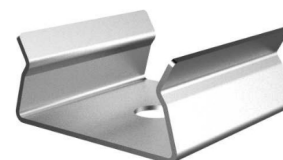
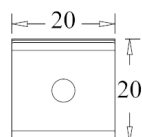
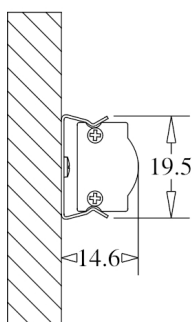


DC24 Connector
ZZ=46

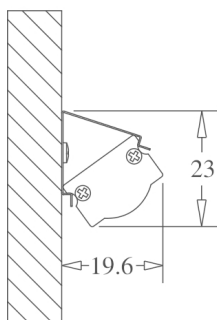
Fixture option



Unit of measurement: mm
180° CLIP W/ 45° BASE Cod: 8400035115



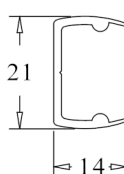
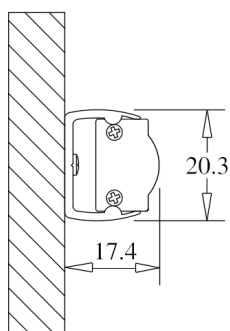
Unit of measurement: mm
180° FIX CLIP Cod: 8400035111



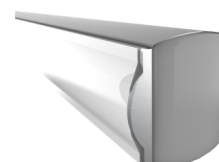
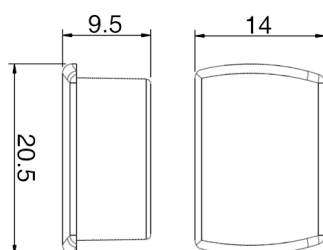
Unit of measurement: mm
45° FIX CLIP Cod: 8400035112



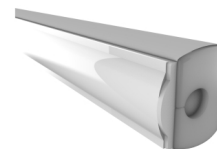
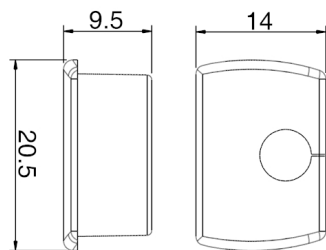
Unit of measurement: mm
ROTATING CLIP Cod: 8400035114



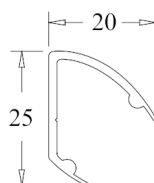
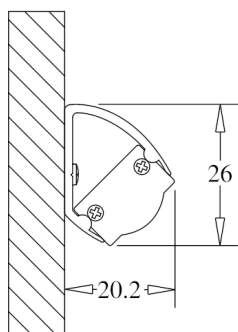
Unit of measurement: mm
180 ° PVC SUPPORT
TYPE: 180°



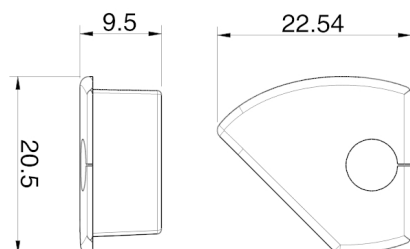
Unit of measurement: mm
180 ° PVC SUPPORT SILICONE CAP WHITHOUT HOLE
COLOR CODES AVAIALE: BR: 8400033071 || CZ: 8400033081



Unit of measurement: mm
180 ° PVC SUPPORT SILICONE CAP WITH HOLE
COLOR CODES AVAILABLE: BR: 8400033072 || CZ: 8400033082



Unit of measurement: mm
45 ° PVC SUPPORT
TYPE: 45°



Unit of measurement: mm
45 ° PVC SUPPORT SILICONE CAP WITH HOLE
COLOR CODES AVAILABLE: BR Right: 8400033076 || CZ Right: 8400033086 || BR Left: 8400033075 || CZ Left: 8400033085



Unit of measurement: mm
CORNER PVC SUPPORT
TYPE: CORNER



Unit of measurement: mm
CORNER PVC SUPPORT SILICONE CAP
COLOR CODES AVAILABLE: BR: 8400033073 || CZ: 8400033083



Unit of measurement: mm
CORNER PVC SUPPORT SILICONE CAP
COLOR CODES AVAILABLE: BR: 8400033074 || CZ: 8400033084



Unit of measurement: mm
180° FIXATION CLIP - POLYCARBONATE Cod: 8400035117



Unit of measurement: mm
FIXATION SUPPORT - POLYCARBONATE Cod: 8400035119