



## Description

The Pink LED Bars HE, aims to increase lighting distribution on showcases/display cases of fresh products, especially meat and create a new lighting concept and obtain electrical energy consumption reduction.

The LEDs meet the Eye safety standard EN62471 classified in RG-1.

The polycarbonate bar lens Trirex 3030IR, meets the food safety standards for FDA 21CFR 177.1580 and the European standard (EU) No. 10/2011.

Huge flexibility size, (75-2250mm) allows size and lighting composition for each project.

Easy to install, allows the use of single bars for each sizes, or join several continuous bars.

It creates a new, cleaner and more effective lighting style, allowing a new decor design of the lit areas.

An higher lifetime is achieved comparing with traditional fluorescent lamps. There's no ultraviolet or infrared radiation and it is environmental friendly because it is repairable and does not contain mercury or any other dangerous product.

## Technical Features:

Power source	Class II constant voltage external LED drive power supply
Voltage	24 ± 3 V DC
Current	126 mA
Power	3 ± 0.5 W
Useful Lifetime	60.000 hours (L70 - 55°C @ 65%H) *
Beam angle	120 ± 5° **
Field angle	Clear: 135 ± 5° Frost: 195 ± 5° ***
Nr of LEDs	36 - SMD
Working Temp.	-20 to 40 °C
Isolation	Class III
Protection degree	IP42
Lumen maintenance	LM80
Certificate	CE / RoHs

\*Luminosity depreciation based on L70.

\*\*Beam angle: 50% of maximum lum.

\*\*\*Field angle: 10% of maximum lum.

## Light Technical Data:

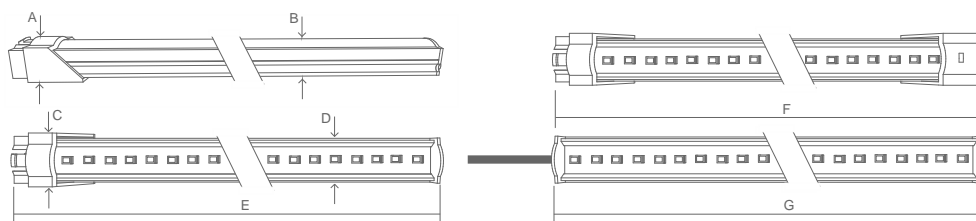
Reference	Description	Lum. flux (Lm)*	Eff. (Lm/W)	Color Temp. (K)**	Color	CRI >	Lens type
11022591111 <a href="#">XXYYZZ</a>	LLED Barra 24V 25 Talho HE Clear	312	104	PINK	-	80	Clear
11022591112 <a href="#">XXYYZZ</a>	LLED Barra 24V 25 Talho HE Frost	268	89	PINK	-	80	Frost

\* Luminous flux ± 7.5%

\* Other color temperatures available upon request



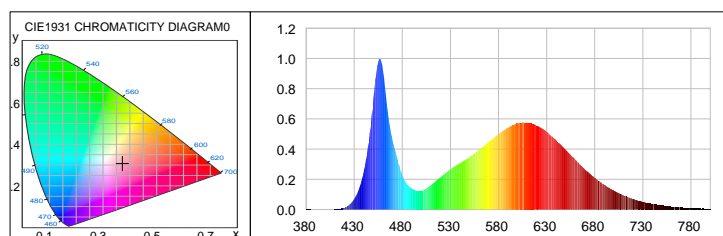
## Dimensions



A (mm)	B (mm)	C (mm)	D (mm)	E (mm)	F (mm)	G (mm)
15	12	20	17	244	260	229

## Photometric Data

### Pink



#### Photometric Parameters

EEI: 0.18 Energy Efficiency Class: A (EU 874-2012)

#### CIE Colorimetric Parameters

Chromaticity coordinates:  $x=0.3725$   $y=0.3078$   $u(u')=0.2504$   $v=0.3105$   $v'=0.4657$

CCT:  $T_c=3570K$  ( $duv=-0.03371$ )

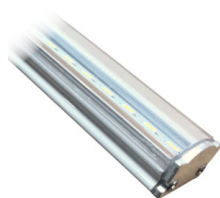
Color Ratio:  $R=0.237$   $G=0.713$   $B=0.050$

CRI:  $R_a=84.9$

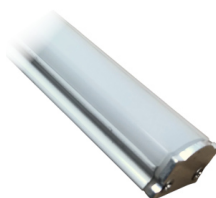
TM30:  $R_f=78$ ,  $R_g=101$

## Options

### Cover type



Clear



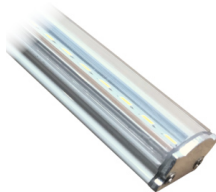
Frost

XXYYZZ - The last six digits are additional options.

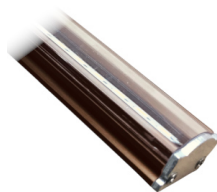
XX - Bar body finishing.



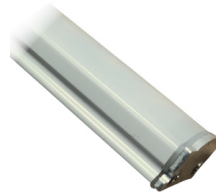
Natural Aluminum  
XX=01



White Aluminum  
XX=02



Brown Aluminum  
XX=03

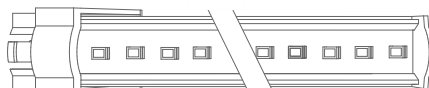


Polycarbonate  
XX=81

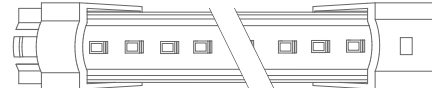
YY - Bar connection.



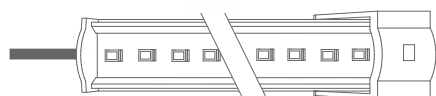
Top Input cable  
YY=01



Male connector input - 1C2P  
YY=04

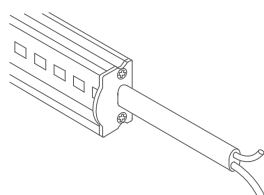


Male connector input female connector output -  
2C2P  
YY=06



Top Input cable output connector - 1C2P+STopo  
YY=08

ZZ - Cable type.



Without connector  
ZZ=00



ASQC2 Connector  
ZZ=27

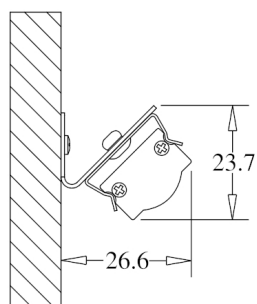


DCJ Connector  
ZZ=41

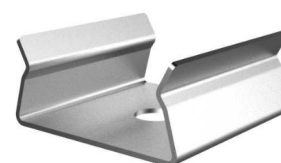


DC24 Connector  
ZZ=46

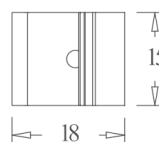
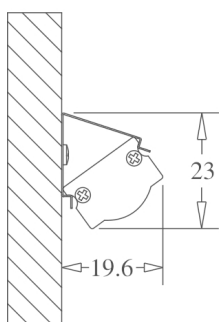
# Fixture option



Unit of measurement: mm  
180° CLIP W/ 45° BASE Cod: 8400035115



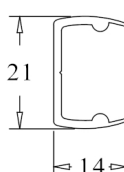
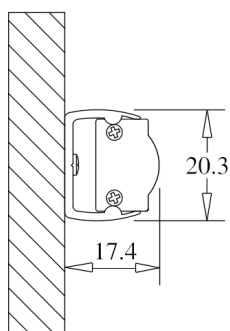
Unit of measurement: mm  
180 ° FIX CLIP Cod: 8400035111



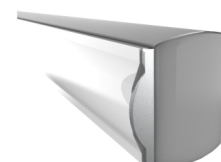
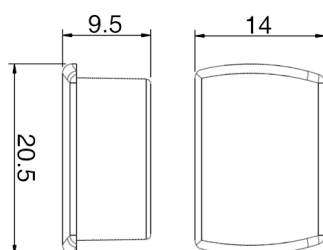
Unit of measurement: mm  
45 ° FIX CLIP Cod: 8400035112



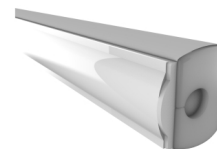
Unit of measurement: mm  
ROTATING CLIP Cod: 8400035114



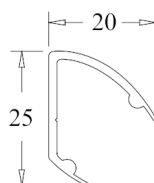
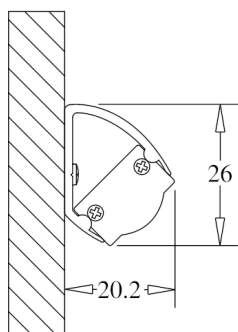
Unit of measurement: mm  
180 ° PVC SUPPORT  
TYPE: 180°



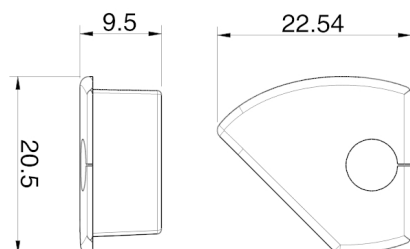
Unit of measurement: mm  
180 ° PVC SUPPORT SILICONE CAP WHITHOUT HOLE  
COLOR CODES AVAILABLE: BR: 8400033071 || CZ: 8400033081



Unit of measurement: mm  
180 ° PVC SUPPORT SILICONE CAP WITH HOLE  
COLOR CODES AVAILABLE: BR: 8400033072 || CZ: 8400033082



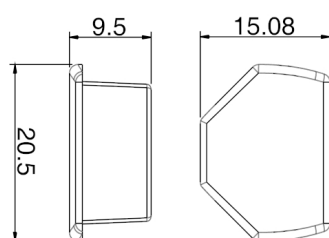
Unit of measurement: mm  
45 ° PVC SUPPORT  
TYPE: 45°



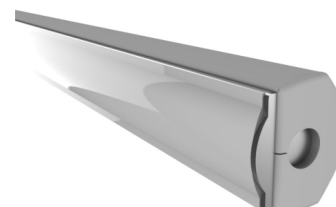
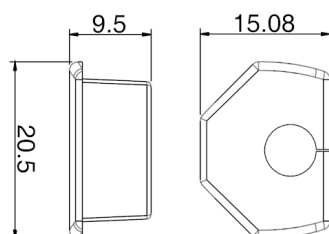
Unit of measurement: mm  
45 ° PVC SUPPORT SILICONE CAP WITH HOLE  
COLOR CODES AVAILABLE: BR Right: 8400033076 || CZ Right: 8400033086 || BR Left: 8400033075 || CZ Left: 8400033085



Unit of measurement: mm  
CORNER PVC SUPPORT  
TYPE: CORNER



Unit of measurement: mm  
CORNER PVC SUPPORT SILICONE CAP  
COLOR CODES AVAILABLE: BR: 8400033073 || CZ: 8400033083



Unit of measurement: mm  
CORNER PVC SUPPORT SILICONE CAP  
COLOR CODES AVAILABLE: BR: 8400033074 || CZ: 8400033084



Unit of measurement: mm  
180° FIXATION CLIP - POLYCARBONATE Cod: 8400035117



Unit of measurement: mm  
FIXATION SUPPORT - POLYCARBONATE Cod: 8400035119