

Descrição



A Barra LED tem como finalidade criar um novo conceito de iluminação e reduzir consideravelmente os consumos energéticos.

Margem da temperatura de cor de 3 SDCM tendo como referencia o centro da elipse de MacAdam segundo a norma ANSI C78.377:2011.

Classe energética A+.

Os LEDs cumprem a norma Eye safety EN62471 classificados no Grupo de Risco 1.

A lente da barra em policarbonato Trirex 3030IR, cumpre as normas de segurança alimentar *food contact* FDA 21CFR 177.1580 e a norma europeia (EU) No. 10/2011.

Uma grande flexibilidade de tamanhos, (10cm a 225cm) permite adequar a composição dos tamanhos e luminosidade a cada projecto.

De fácil instalação, permite a utilização de barras individuais de vários tamanhos e/ou juntar várias barras em linha contínua de forma que o espaço a iluminar seja o mais adequado.

Características:

Fonte de Alimentação	Fonte externa LED drive voltagem constante classe II
Voltagem	24 ± 3 V DC
Corrente	546 mA
Potência	13 ± 0.5 W
Tempo de Vida Útil	60.000 horas (L70 - 55°C @ 65%H) *
Feixe de luz	120 ± 5° **
Abertura de luz	Transparente: 135 ± 5° Difuso: 195 ± 5° ***
Nº de LEDs	156 - SMD
Temp. Funcionamento	-20 a 40 °C
Isolamento	Classe III
Grau de protecção	IP42
Conservação Luminosa	LM80 (Relatório disponível: LM-80 9000hrs)
Certificado	CE / RoHs

* Depreciação luminosa baseada no L70.

** Feixe de luz: 50% da lum. máxima.

*** Abertura de luz: 10% da lum. máxima.

Características Luminotécnicas:

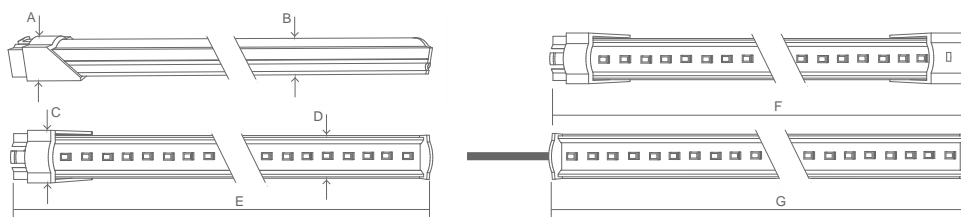
Referência	Descrição	Fluxo Lum. (Lm)*	Efi. (Lm/W)	Temperatura Cor (K)**	Cor	CRI >	Tipo de Lente
11097532111 XXYYZZ	LLED Barra 24V 100 WW303 HE Clear	1599	123	3045 ± 84	Quente	80	Transparente
11097534111 XXYYZZ	LLED Barra 24V 100 NW403 HE Clear	1672	129	3986 ± 144	Neutro	80	Transparente
11097524111 XXYYZZ	LLED Barra 24V 100 NW403 Clear	1596	123	3986 ± 144	Neutro	80	Transparente
11097525111 XXYYZZ	LLED Barra 24V 100 CW503 Clear	1596	123	5029 ± 186	Frio	80	Transparente
11097536111 XXYYZZ	LLED Barra 24V 100 CW573 HE Clear	1672	129	5668 ± 207	Frio	80	Transparente
11097527111 XXYYZZ	LLED Barra 24V 100 CW653 Clear	1596	123	6536 ± 279	Frio	80	Transparente
11097532112 XXYYZZ	LLED Barra 24V 100 WW303 HE Frost	1373	106	3045 ± 84	Quente	80	Difuso
11097534112 XXYYZZ	LLED Barra 24V 100 NW403 HE Frost	1436	110	3986 ± 144	Neutro	80	Difuso
11097524112 XXYYZZ	LLED Barra 24V 100 NW403 Frost	1306	100	3986 ± 144	Neutro	80	Difuso
11097525112 XXYYZZ	LLED Barra 24V 100 CW503 Frost	1306	100	5029 ± 186	Frio	80	Difuso
11097536112 XXYYZZ	LLED Barra 24V 100 CW573 HE Frost	1436	110	5668 ± 207	Frio	80	Difuso
11097527112 XXYYZZ	LLED Barra 24V 100 CW653 Frost	1306	100	6536 ± 279	Frio	80	Difuso

* Fluxo Luminoso ± 7.5%

** Outras temperaturas de cor disponíveis sob encomenda.



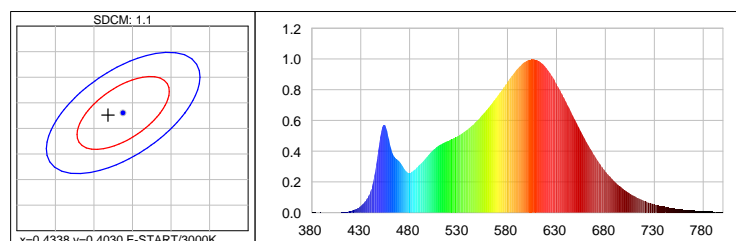
Dimensões



A (mm)	B (mm)	C (mm)	D (mm)	E (mm)	F (mm)	G (mm)
15	12	20	17	994	1010	979

Dados Fotométricos

Branco quente 3000K 3SDCM



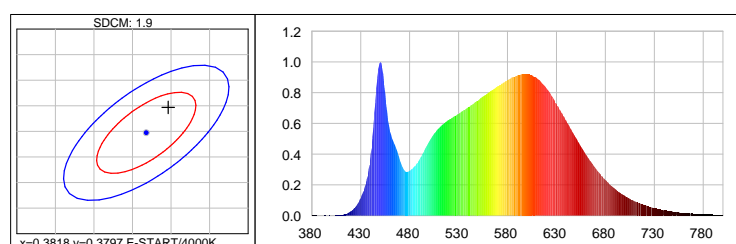
Photometric Parameters
EEI: 0.14

Energy Efficiency Class: A+ (EU 874-2012)

CIE Colorimetric Parameters

Chromaticity coordinates: $x=0.4318$ $y=0.4026$ $u(u')=0.2479$ $v=0.3467$ $v'=0.5200$
CCT: $T_c=3075K$ ($duv=0.00012$) CRI: $R_a=84.9$ Color Ratio: $R=0.229$ $G=0.739$ $B=0.032$

Branco neutro 4000K 3SDCM



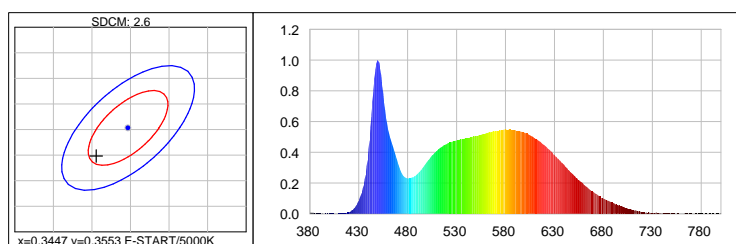
Photometric Parameters
EEI: 0.13

Energy Efficiency Class: A+ (EU 874-2012)

CIE Colorimetric Parameters

Chromaticity coordinates: $x=0.3846$ $y=0.3847$ $u(u')=0.2247$ $v=0.3371$ $v'=0.5056$
CCT: $T_c=3947K$ ($duv=0.00246$) CRI: $R_a=84.5$ Color Ratio: $R=0.186$ $G=0.777$ $B=0.037$

Branco frio 5000K 3SDCM



Photometric Parameters

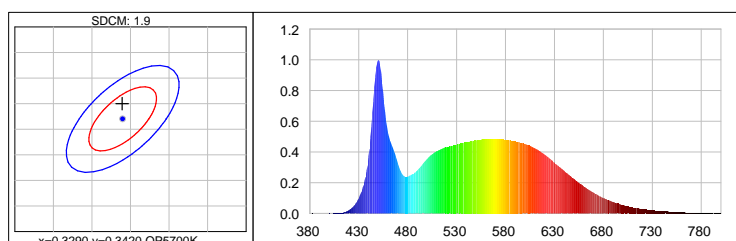
EEL: 0.15 Energy Efficiency Class: A+ (EU 874-2012)

CIE Colorimetric Parameters

Chromaticity coordinates: $x=0.3406$ $y=0.3498$ $u(u')=0.2090$ $v=0.3221$ $v'=0.4831$

CCT: $T_c=5172K$ ($duv=0.00096$) CRI: $R_a=85.4$ Color Ratio: $R=0.156$ $G=0.797$ $B=0.047$

Branco frio 5700K 3SDCM



Photometric Parameters

EEL: 0.14

Energy Efficiency Class: A+ (EU 874-2012)

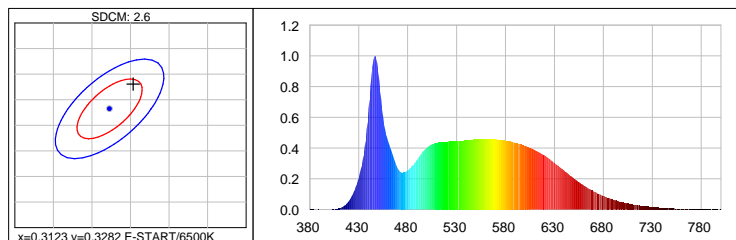
CIE Colorimetric Parameters

Chromaticity coordinates: $x=0.3289$ $y=0.3450$

$u(u')=0.2030$ $v=0.3193$ $v'=0.4790$

CCT: $T_c=5654K$ ($duv=0.00356$) CRI: $R_a=86.6$ Color Ratio: $R=0.147$ $G=0.800$ $B=0.053$

Branco frio 6500K 3SDCM



Photometric Parameters

EEL: 0.15

Energy Efficiency Class: A+ (EU 874-2012)

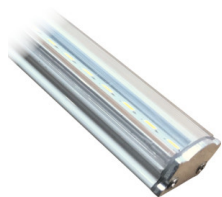
CIE Colorimetric Parameters

Chromaticity coordinates: $x=0.3154$ $y=0.3330$ $u(u')=0.1982$ $v=0.3139$ $v'=0.4709$

CCT: $T_c=6338K$ ($duv=0.00393$) CRI: $R_a=87.4$ Color Ratio: $R=0.140$ $G=0.803$ $B=0.057$

Opções

Tipo de Lente



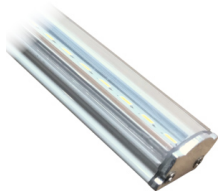
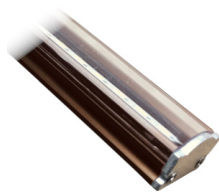
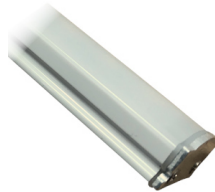
Transparente



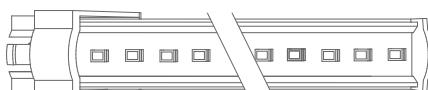
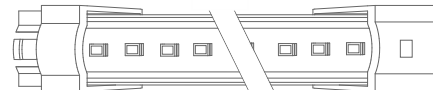
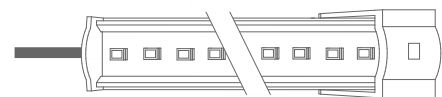
Difuso

XXYYZZ - Os últimos seis algarismos são opções adicionais.

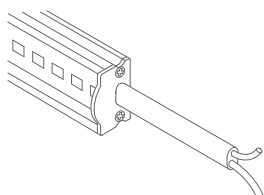
XX - Acabamento do corpo da barra.


Alumínio natural
XX=01

Alumínio branco
XX=02

Alumínio castanho
XX=03

Policarbonato Frost
XX=81

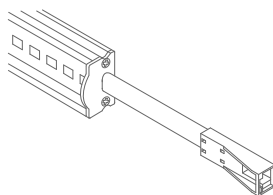
YY - Modo de ligação da barra.


Entrada cabo topo
YY=01

Entrada conector macho - 1C2P
YY=04

Entrada conector macho saída conector fêmea -
2C2P
YY=06

Entrada cabo topo saída conector - 1C2P+STopo
YY=08

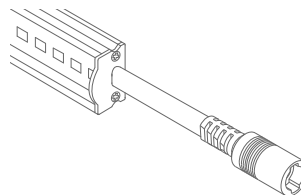
ZZ - Tipo de cabo.



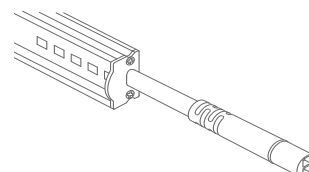
Sem conector
ZZ=00



Conector ASQC2
ZZ=27

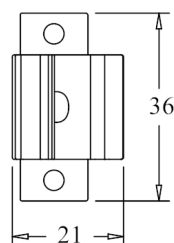
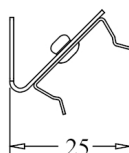
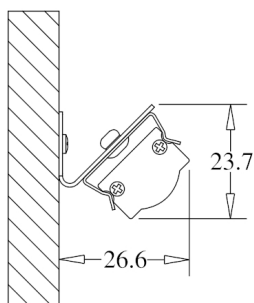


Conector DCJ
ZZ=41

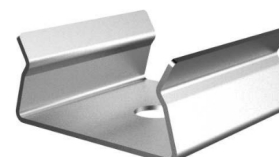
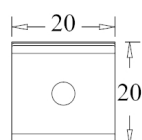
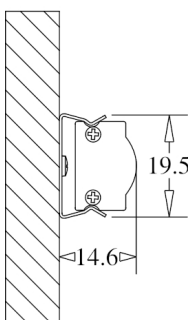


Conector DC24
ZZ=46

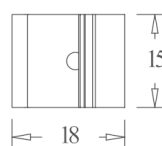
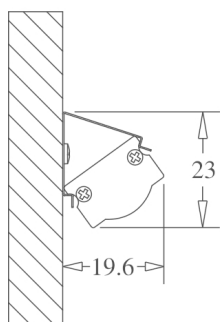
Opções de Fixação



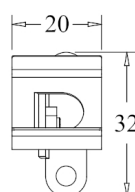
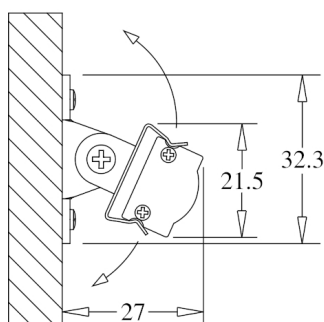
Unidade de medida: mm
CLIP 180 ° C/ BASE 45 ° Cod: 8400035115



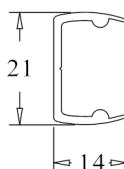
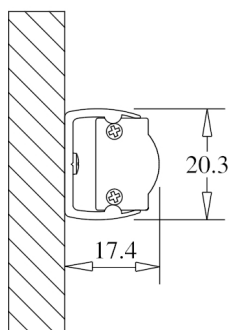
Unidade de medida: mm
CLIP FIXO 180 ° Cod: 8400035111



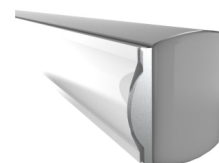
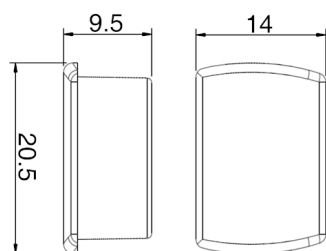
Unidade de medida: mm
CLIP FIXO 45 ° Cod: 8400035112



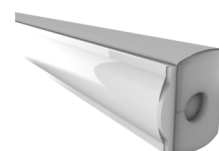
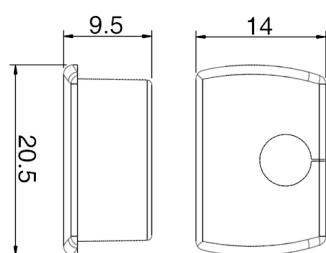
Unidade de medida: mm
CLIP ROTATIVO Cod: 8400035114



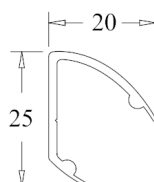
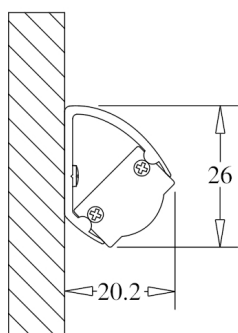
Unidade de medida: mm
SUPORTE PVC 180°
TIPO: 180°



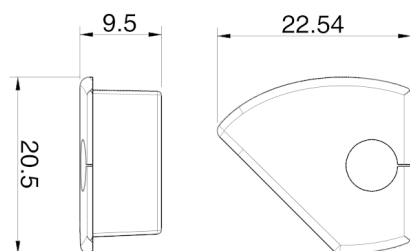
Unidade de medida: mm
TAMPA SILICONE SUPORTE PVC 180 ° S/ FURO
CÓDIGOS CORES DISPONÍVEIS: BR: 8400033071 || CZ: 8400033081



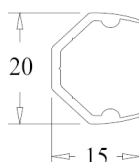
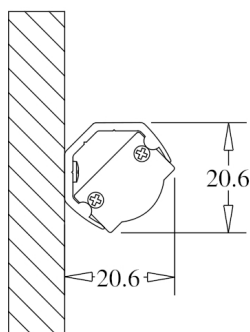
Unidade de medida: mm
TAMPA SILICONE SUPORTE PVC 180 ° C/ FURO
CÓDIGOS CORES DISPONÍVEIS: BR: 8400033072 || CZ: 8400033082



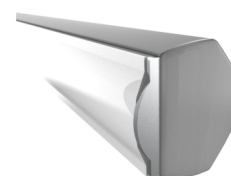
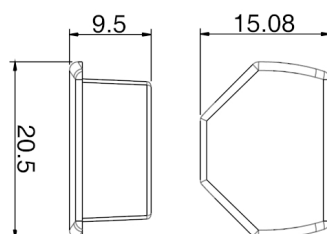
Unidade de medida: mm
SUPORTE PVC 45°
TIPO: 45°



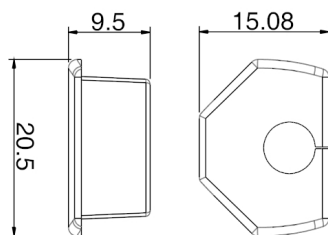
Unidade de medida: mm
TAMPA SILICONE SUPORTE PVC 45 ° C/ FURO
CÓDIGOS CORES DISPONÍVEIS: BR Dir: 8400033076 || CZ Dir: 8400033086 || BR Esq: 8400033075 || CZ Esq: 8400033085



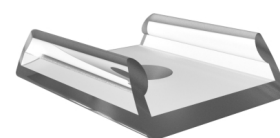
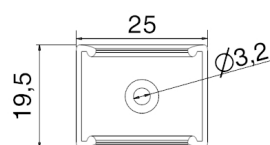
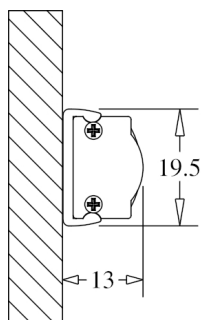
Unidade de medida: mm
SUPORTE PVC DE CANTO
TIPO: CANTO



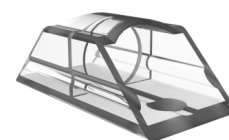
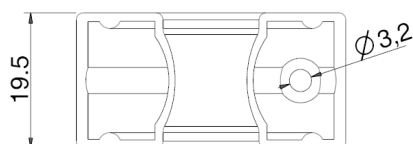
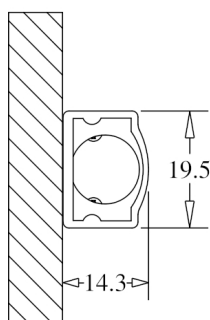
Unidade de medida: mm
TAMPA SILICONE SUPORTE PVC CANTO
CÓDIGOS CORES DISPONÍVEIS: BR: 8400033073 || CZ: 8400033083



Unidade de medida: mm
TAMPA SILICONE SUPORTE PVC CANTO
CÓDIGOS CORES DISPONÍVEIS: BR: 8400033074 || CZ: 8400033084



Unidade de medida: mm
CLIP FIXAÇÃO 180 ° - POLICARBONATO Cod: 8400035117



Unidade de medida: mm
SUPORTE FIXAÇÃO - POLICARBONATO Cod: 8400035119