

Description



The 24V Eco LED Bars, just like our 24V LED Bars , aims to create a new lighting concept and considerably reduce even more energy consumptions than previous versions.

Color temperature tolerance of 3 SDCM MacAdam ellipses, defined by ANSI C78.377:2011

Energy Efficiency Class: A+ (EU 874-2012)

LEDs are classified as Risk Group 1 according standard EN62471 Photobiological Safety of Lamps and Lamp Systems.

Our polycarbonate lent Trirex 3030IR, meets the standard for Food contact FDA 21CFR 177.1580 and (EU) No. 10/2011 for European Union

A great flexibility of sizes, (10cm to 220cm) allows to adapt the sizes and luminosity to each project.

With easy installation, allows the use of individual bars for each of the sizes and or join several bars in a continuous line so that the space is suitably illuminated.

Technical Features:

Power source	Class II constant voltage external LED drive power supply
Voltage	24 ± 3 V DC
Current	420 mA
Power	10.1 ± 0.5W
Useful Lifetime	60.000 hours (L70 - 55°C @ 65%H) *
Beam angle	120 ± 5° **
Field angle	Clear: 135 ± 5° Frost: 195 ± 5° ***
Nr of LEDs	98 - SMD
Working Temp.	-20 to 40 °C
Isolation	Class III
Protection degree	IP42
Lumen maintenance	LM80 (Report available: LM-80 9000hrs)
Certificate	CE / RoHs

*Luminosity depreciation based on L70.

**Beam angle: 50% of maximum lum.

***Field angle: 10% of maximum lum.

Light Technical Data:

Reference	Description	Lum. flux (Lm)*	Eff. (Lm/W)	Color Temp. (K)**	Color	CRI >	Lens type
11105032151 XXYYZZ	LLED Barra 24V 105 WW303 HE ECO DL Clear	1119	111	3045 ± 84	Warm	80	Clear
11105024151 XXYYZZ	LLED Barra 24V 105 NW403 ECO DL Clear	1087	108	3986 ± 144	Neutral	80	Clear
11105034151 XXYYZZ	LLED Barra 24V 105 NW403 HE ECO DL Clear	1171	116	3986 ± 144	Neutral	80	Clear
11105025151 XXYYZZ	LLED Barra 24V 105 CW503 ECO DL Clear	1087	108	5029 ± 186	Cool	80	Clear
11105036151 XXYYZZ	LLED Barra 24V 105 CW573 HE ECO DL Clear	1171	116	5668 ± 207	Cool	80	Clear
11105027151 XXYYZZ	LLED Barra 24V 105 CW653 ECO DL Clear	1087	108	6536 ± 279	Cool	80	Clear
11105032152 XXYYZZ	LLED Barra 24V 105 WW303 HE ECO DL Frost	926	92	3045 ± 84	Warm	80	Frost
11105024152 XXYYZZ	LLED Barra 24V 105 NW403 ECO DL Frost	864	86	3986 ± 144	Neutral	80	Frost
11105034152 XXYYZZ	LLED Barra 24V 105 NW403 HE ECO DL Frost	969	96	3986 ± 144	Neutral	80	Frost
11105025152 XXYYZZ	LLED Barra 24V 105 CW503 ECO DL Frost	864	86	5029 ± 186	Cool	80	Frost
11105036152 XXYYZZ	LLED Barra 24V 105 CW573 HE ECO DL Frost	969	96	5668 ± 207	Cool	80	Frost
11105027152 XXYYZZ	LLED Barra 24V 105 CW653 ECO DL Frost	864	86	6536 ± 279	Cool	80	Frost

* Luminous flux ± 7.5%

* Other color temperatures available upon request



Dimensions



A (mm)	B (mm)	C (mm)	D (mm)	E (mm)	F (mm)	G (mm)
15	12	20	17	1069	1085	1054

Photometric Data

Cool white 6500K 3SDCM



Photometric Parameters

EEI: 0.15 Energy Efficiency Class: A+ (EU 874-2012)

CIE Colorimetric Parameters

Chromaticity coordinates: $x=0.3154$ $y=0.3330$ $u(u')=0.1982$ $v=0.3139$ $v'=0.4709$

CCT: $T_c=6338K$ ($duv=0.00393$) CRI: $R_a=87.4$ Color Ratio: $R=0.140$ $G=0.803$ $B=0.057$

Options

Cover type



Clear

Frost

XXYYZZ - The last six digits are additional options.

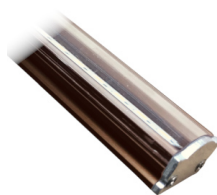
XX - Bar body finishing.



Natural Aluminum
XX=01



White Aluminum
XX=02



Brown Aluminum
XX=03



Polycarbonate
XX=81

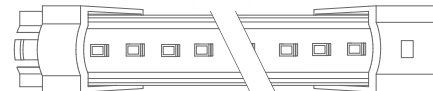
YY - Bar connection.



Top Input cable
YY=01



Male connector input - 1C2P
YY=04

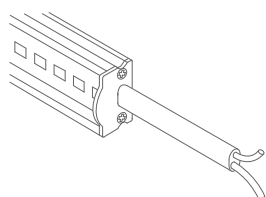


Male connector input female connector output -
2C2P
YY=06

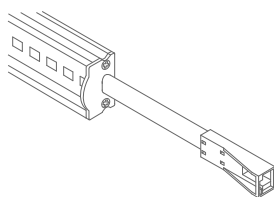


Top Input cable output connector - 1C2P+STopo
YY=08

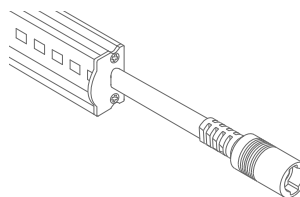
ZZ - Cable type.



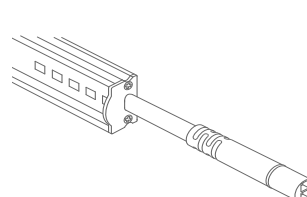
Without connector
ZZ=00



ASQC2 Connector
ZZ=27

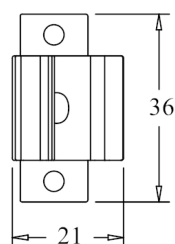
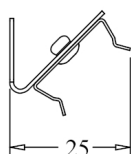
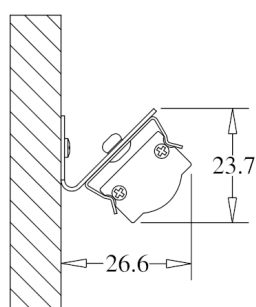


DCJ Connector
ZZ=41



DC24 Connector
ZZ=46

Fixture option



Unit of measurement: mm
180° CLIP W/ 45° BASE Cod: 8400035115



Unit of measurement: mm
180 ° FIX CLIP Cod: 8400035111



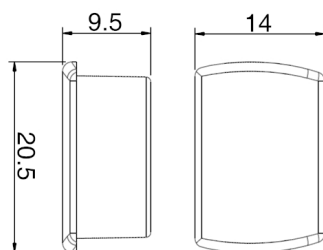
Unit of measurement: mm
45 ° FIX CLIP Cod: 8400035112



Unit of measurement: mm
ROTATING CLIP Cod: 8400035114



Unit of measurement: mm
180 ° PVC SUPPORT
TYPE: 180°



Unit of measurement: mm
180 ° PVC SUPPORT SILICONE CAP WHITHOUT HOLE
COLOR CODES AVAILABLE: BR: 8400033071 || CZ: 8400033081



Unit of measurement: mm
180 ° PVC SUPPORT SILICONE CAP WITH HOLE
COLOR CODES AVAILABLE: BR: 8400033072 || CZ: 8400033082



Unit of measurement: mm
45 ° PVC SUPPORT
TYPE: 45°



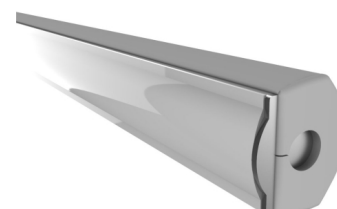
Unit of measurement: mm
45 ° PVC SUPPORT SILICONE CAP WITH HOLE
COLOR CODES AVAILABLE: BR Right: 8400033076 || CZ Right: 8400033086 || BR Left: 8400033075 || CZ Left: 8400033085



Unit of measurement: mm
CORNER PVC SUPPORT
TYPE: CORNER



Unit of measurement: mm
CORNER PVC SUPPORT SILICONE CAP
COLOR CODES AVAILABLE: BR: 8400033073 || CZ: 8400033083



Unit of measurement: mm
CORNER PVC SUPPORT SILICONE CAP
COLOR CODES AVAILABLE: BR: 8400033074 || CZ: 8400033084



Unit of measurement: mm
180° FIXATION CLIP - POLYCARBONATE Cod: 8400035117



Unit of measurement: mm
FIXATION SUPPORT - POLYCARBONATE Cod: 8400035119