

Description



The Eco² LED Bars, just like our 3s Led Bars or ECO, aims to create a new lighting concept and considerably reduce even more energy consumptions than previous versions.

Color temperature tolerance of 3 SDCM MacAdam ellipses, defined by ANSI C78.377:2011 LEDs are classified as Risk Group 1 according standard EN62471.

Photobiological Safety of Lamps and Lamp Systems. Our polycarbonate lens Trirex 3030IR, meets the standard for Food contact FDA 21CFR 177.1580 and (EU) No. 10/2011 for European Union.

Huge flexibility size(90-2250mm) allows size and lighting composition for each project.

Easy to install, allows the use of single bars for each sizes, or join several continuous bars so that the lighting space is suitable.

Technical Features:

Power source	Class II constant voltage external LED drive power supply
Voltage	24 ± 3 V DC
Current	24 mA
Power	0.6 ±0.2W
Useful Lifetime	60.000 hours (L70 - 55°C @ 65%H) *
Beam angle	120 ± 5° **
Field angle	Clear: 135 ± 5° Frost: 195 ± 5° ***
Nr of LEDs	6 - SMD
Working Temp.	-20 to 40 °C
Isolation	Class III
Protection degree	IP42
Lumen maintenance	LM80 (Report available: LM-80 9000hrs)
Certificate	CE / RoHs

*Luminosity depreciation based on L70.

**Beam angle: 50% of maximum lum.

***Field angle: 10% of maximum lum.

Light Technical Data:

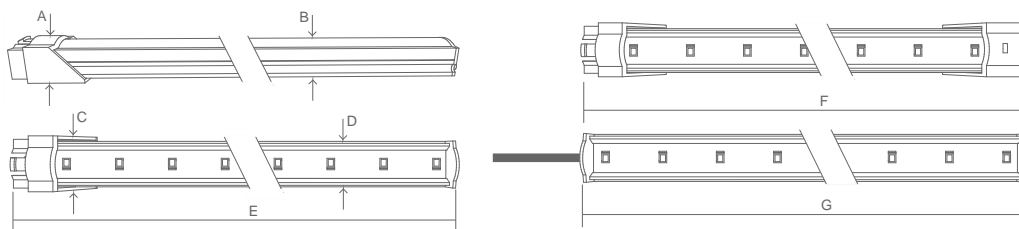
Reference	Description	Lum. flux (Lm)*	Eff. (Lm/W)	Color Temp. (K)**	Color	CRI >	Lens type
11007532161 XXYYZZ	LLED Barra 24V 10 WW303 HE ECO ² DL Clear	58	96	3045 ± 84	Warm	80	Clear
11007542161 XXYYZZ	LLED Barra 24V 10 WW303 E1 ECO ² DL Clear	60	100	3045 ± 84	Warm	80	Clear
11007534161 XXYYZZ	LLED Barra 24V 10 NW403 HE ECO ² DL Clear	60	101	3986 ± 144	Neutral	80	Clear
11007544161 XXYYZZ	LLED Barra 24V 10 NW403 E1 ECO ² DL Clear	63	106	3986 ± 144	Neutral	80	Clear
11007525161 XXYYZZ	LLED Barra 24V 10 CW503 ECO ² DL Clear	53	89	5029 ± 186	Cool	80	Clear
11007536161 XXYYZZ	LLED Barra 24V 10 CW573 HE ECO ² DL Clear	60	101	5668 ± 207	Cool	80	Clear
11007527161 XXYYZZ	LLED Barra 24V 10 CW653 ECO ² DL Clear	53	89	6536 ± 279	Cool	80	Clear
11007532162 XXYYZZ	LLED Barra 24V 10 WW303 HE ECO ² DL Frost	45	76	3045 ± 84	Warm	80	Frost
11007542162 XXYYZZ	LLED Barra 24V 10 WW303 E1 ECO ² DL Frost	46	76	3045 ± 84	Warm	80	Frost
11007534162 XXYYZZ	LLED Barra 24V 10 NW403 HE ECO ² DL Frost	47	79	3986 ± 144	Neutral	80	Frost
11007544162 XXYYZZ	LLED Barra 24V 10 NW403 E1 ECO ² DL Frost	48	80	3986 ± 144	Neutral	80	Frost
11007525162 XXYYZZ	LLED Barra 24V 10 CW503 ECO ² DL Frost	42	71	5029 ± 186	Cool	80	Frost
11007536162 XXYYZZ	LLED Barra 24V 10 CW573 HE ECO ² DL Frost	47	79	5668 ± 207	Cool	80	Frost
11007527162 XXYYZZ	LLED Barra 24V 10 CW653 ECO ² DL Frost	42	71	6536 ± 279	Cool	80	Frost

* Luminous flux ± 7.5%

* Other color temperatures available upon request



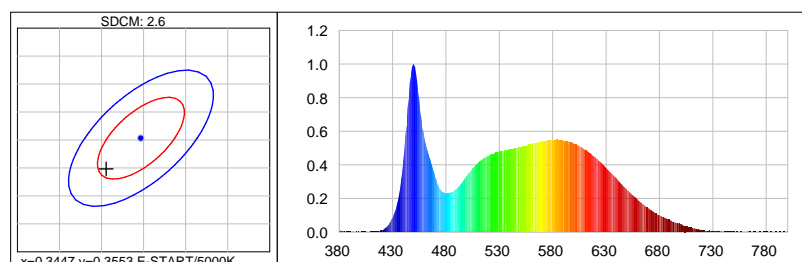
Dimensions



A (mm)	B (mm)	C (mm)	D (mm)	E (mm)	F (mm)	G (mm)
15	12	20	17	94	110	79

Photometric Data

Cool white 5000K 3SDCM



Photometric Parameters

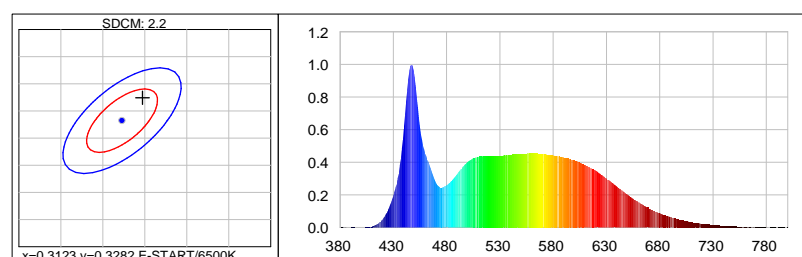
EEL: 0.15 Energy Efficiency Class: A+ (EU 874-2012)

CIE Colorimetric Parameters

Chromaticity coordinates: $x=0.3406$ $y=0.3498$ $u(u')=0.2090$ $v=0.3221$ $v'=0.4831$

CCT: $T_c=5172K$ ($duv=0.00096$) CRI: $R_a=85.4$ Color Ratio: $R=0.156$ $G=0.797$ $B=0.047$

Cool white 6500K 3SDCM



Photometric Parameters

EEL: 0.15

Energy Efficiency Class: A+ (EU 874-2012)

CIE Colorimetric Parameters

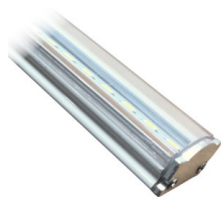
Chromaticity coordinates: $x=0.3147$ $y=0.3324$

$u(u')=0.1980$ $v=0.3136$ $v'=0.4704$

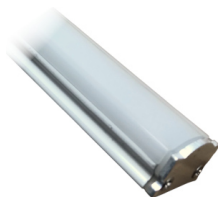
CCT: $T_c=6374K$ ($duv=0.00392$) CRI: $R_a=87.8$ Color Ratio: $R=0.140$ $G=0.802$ $B=0.058$

Options

Cover type



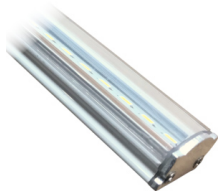
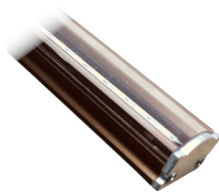
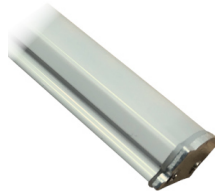
Clear



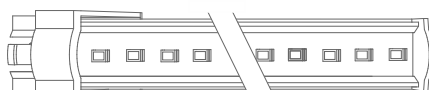
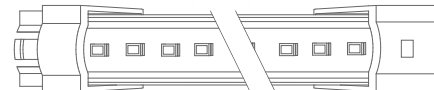
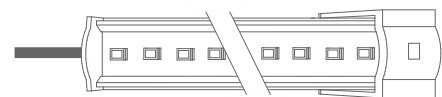
Frost

XXYYZZ - The last six digits are additional options.

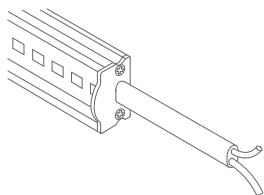
XX - Bar body finishing.


Natural Aluminum
XX=01

White Aluminum
XX=02

Brown Aluminum
XX=03

Polycarbonate
XX=81

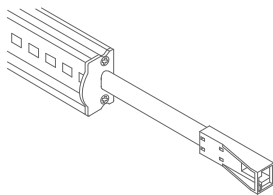
YY - Bar connection.


Top Input cable
YY=01

Male connector input - 1C2P
YY=04

Male connector input female connector output -
2C2P
YY=06

Top Input cable output connector - 1C2P+STopo
YY=08

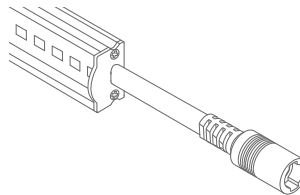
ZZ - Cable type.



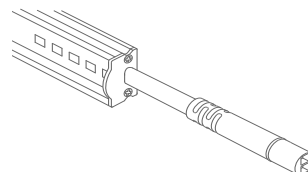
Without connector
ZZ=00



ASQC2 Connector
ZZ=27

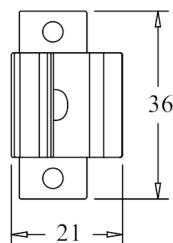
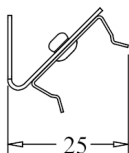
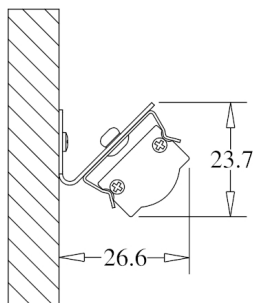


DCJ Connector
ZZ=41

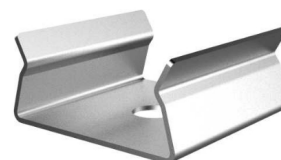
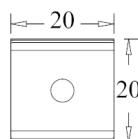
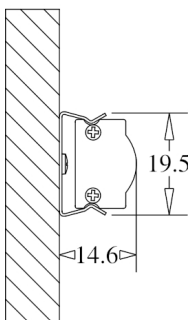


DC24 Connector
ZZ=46

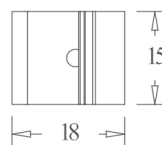
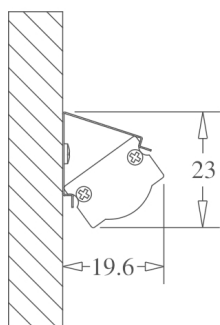
Fixture option



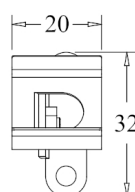
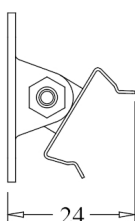
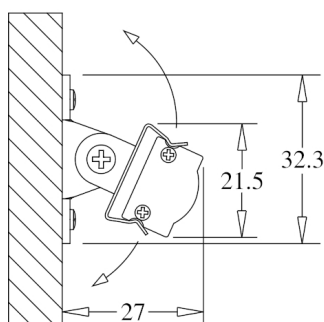
Unit of measurement: mm
180° CLIP W/ 45° BASE Cod: 8400035115



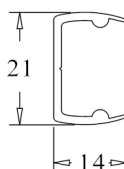
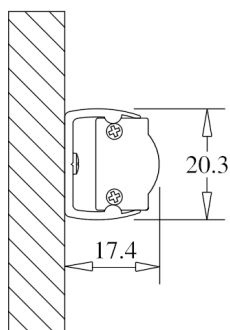
Unit of measurement: mm
180 ° FIX CLIP Cod: 8400035111



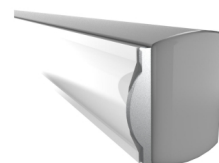
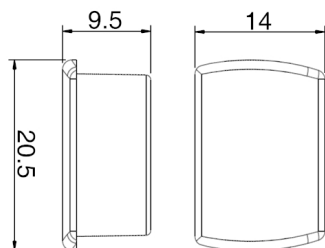
Unit of measurement: mm
45 ° FIX CLIP Cod: 8400035112



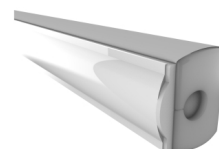
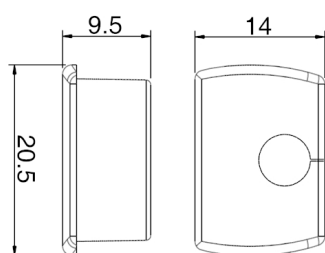
Unit of measurement: mm
ROTATING CLIP Cod: 8400035114



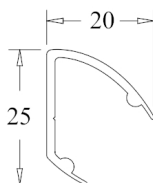
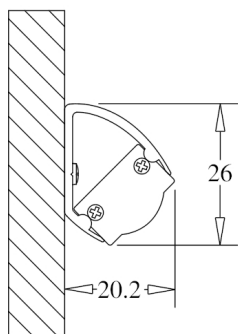
Unit of measurement: mm
180 ° PVC SUPPORT
TYPE: 180°



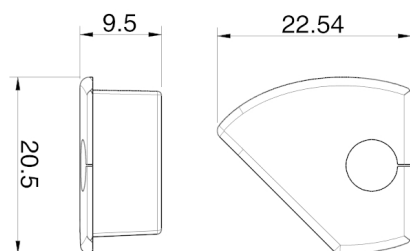
Unit of measurement: mm
180 ° PVC SUPPORT SILICONE CAP WHITHOUT HOLE
COLOR CODES AVAIALE: BR: 8400033071 || CZ: 8400033081



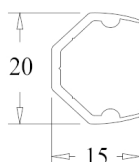
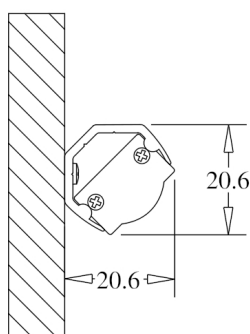
Unit of measurement: mm
180 ° PVC SUPPORT SILICONE CAP WITH HOLE
COLOR CODES AVAIALE: BR: 8400033072 || CZ: 8400033082



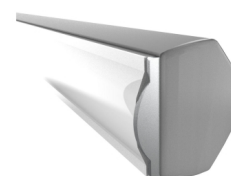
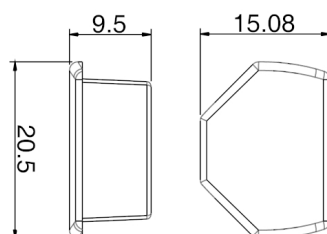
Unit of measurement: mm
45 ° PVC SUPPORT
TYPE: 45°



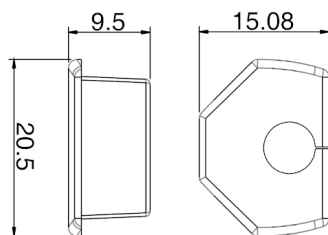
Unit of measurement: mm
 45 ° PVC SUPPORT SILICONE CAP WITH HOLE
 COLOR CODES AVAIALE: BR Right: 8400033076 || CZ Right: 8400033086 || BR Left: 8400033075 || CZ Left: 8400033085



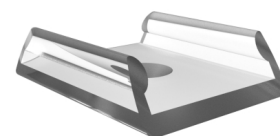
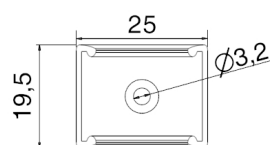
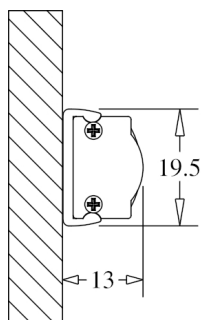
Unit of measurement: mm
 CORNER PVC SUPPORT
 TYPE: CORNER



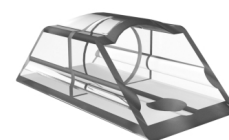
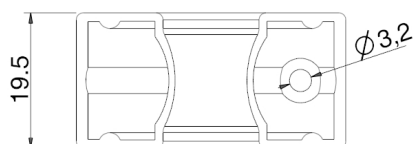
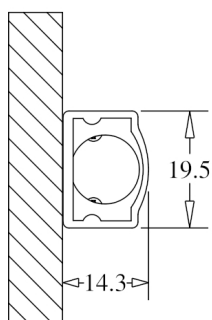
Unit of measurement: mm
 CORNER PVC SUPPORT SILICONE CAP
 COLOR CODES AVAIALE: BR: 8400033073 || CZ: 8400033083



Unit of measurement: mm
 CORNER PVC SUPPORT SILICONE CAP
 COLOR CODES AVAILABLE: BR: 8400033074 || CZ: 8400033084



Unit of measurement: mm
 180° FIXATION CLIP - POLYCARBONATE Cod: 8400035117



Unit of measurement: mm
 FIXATION SUPPORT - POLYCARBONATE Cod: 8400035119