

Description



The 24V Eco LED Bars, just like our 24V LED Bars , aims to create a new lighting concept and considerably reduce even more energy consumptions than previous versions.

Color temperature tolerance of 3 SDCM MacAdam ellipses, defined by ANSI C78.377:2011

Energy Efficiency Class: A+ (EU 874-2012)

LEDs are classified as Risk Group 1 according standard EN62471 Photobiological Safety of Lamps and Lamp Systems.

Our polycarbonate lent Trirex 3030IR, meets the standard for Food contact FDA 21CFR 177.1580 and (EU) No. 10/2011 for European Union

A great flexibility of sizes, (10cm to 220cm) allows to adapt the sizes and luminosity to each project.

With easy installation, allows the use of individual bars for each of the sizes and or join several bars in a continuous line so that the space is suitably illuminated.

Technical Features:

Power source	Class II constant voltage external LED drive power supply
Voltage	24 ± 3 V DC
Current	690 mA
Power	16.6 ±0.5W
Useful Lifetime	60.000 hours (L70 - 55°C @ 65%H) *
Beam angle	120 ± 5° **
Field angle	Clear: 135 ± 5° Frost: 195 ± 5° ***
Nr of LEDs	161 - SMD
Working Temp.	-20 to 40 °C
Isolation	Class III
Protection degree	IP42
Lumen maintenance	LM80 (Report available: LM-80 9000hrs)
Certificate	CE / RoHs

*Luminosity depreciation based on L70.

**Beam angle: 50% of maximum lum.

***Field angle: 10% of maximum lum.

Light Technical Data:

Reference	Description	Lum. flux (Lm)*	Eff. (Lm/W)	Color Temp. (K)**	Color	CRI >	Lens type
11172532151 XXYYZZ	LLED Barra 24V 175 WW303 HE ECO DL Clear	1839	111	3045 ± 84	Warm	80	Clear
11172524151 XXYYZZ	LLED Barra 24V 175 NW403 ECO DL Clear	1785	108	3986 ± 144	Neutral	80	Clear
11172534151 XXYYZZ	LLED Barra 24V 175 NW403 HE ECO DL Clear	1924	116	3986 ± 144	Neutral	80	Clear
11172525151 XXYYZZ	LLED Barra 24V 175 CW503 ECO DL Clear	1785	108	5029 ± 186	Cool	80	Clear
11172536151 XXYYZZ	LLED Barra 24V 175 CW573 HE ECO DL Clear	1924	116	5668 ± 207	Cool	80	Clear
11172527151 XXYYZZ	LLED Barra 24V 175 CW653 ECO DL Clear	1785	108	6536 ± 279	Cool	80	Clear
11172532152 XXYYZZ	LLED Barra 24V 175 WW303 HE ECO DL Frost	1521	92	3045 ± 84	Warm	80	Frost
11172524152 XXYYZZ	LLED Barra 24V 175 NW403 ECO DL Frost	1420	86	3986 ± 144	Neutral	80	Frost
11172534152 XXYYZZ	LLED Barra 24V 175 NW403 HE ECO DL Frost	1591	96	3986 ± 144	Neutral	80	Frost
11172525152 XXYYZZ	LLED Barra 24V 175 CW503 ECO DL Frost	1420	86	5029 ± 186	Cool	80	Frost
11172536152 XXYYZZ	LLED Barra 24V 175 CW573 HE ECO DL Frost	1591	96	5668 ± 207	Cool	80	Frost
11172527152 XXYYZZ	LLED Barra 24V 175 CW653 ECO DL Frost	1420	86	6536 ± 279	Cool	80	Frost

* Luminous flux ± 7.5%

* Other color temperatures available upon request



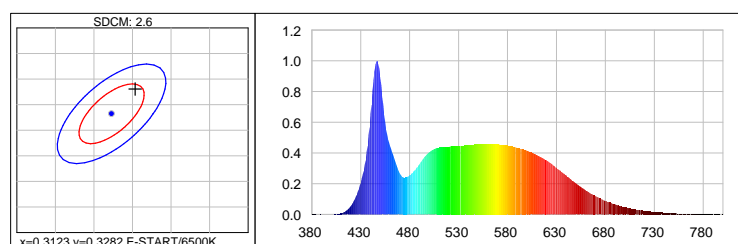
Dimensions



A (mm)	B (mm)	C (mm)	D (mm)	E (mm)	F (mm)	G (mm)
15	12	20	17	1744	1760	1729

Photometric Data

Cool white 6500K 3SDCM



Photometric Parameters

EEI: 0.15 Energy Efficiency Class: A+ (EU 874-2012)

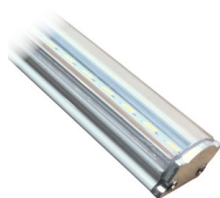
CIE Colorimetric Parameters

Chromaticity coordinates: x=0.3154 y=0.3330 u(u)=0.1982 v=0.3139 v'=0.4709

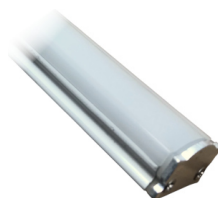
CCT: Tc=6338K (duv=0.00393) CRI: Ra= 87.4 Color Ratio: R=0.140 G=0.803 B=0.057

Options

Cover type



Clear



Frost

XXYYZZ - The last six digits are additional options.

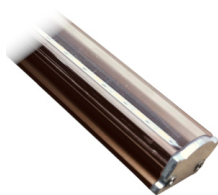
XX - Bar body finishing.



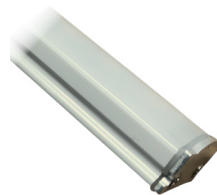
Natural Aluminum
XX=01



White Aluminum
XX=02



Brown Aluminum
XX=03

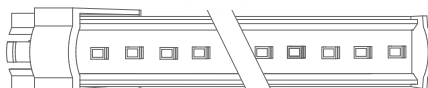


Polycarbonate
XX=81

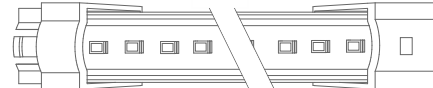
YY - Bar connection.



Top Input cable
YY=01



Male connector input - 1C2P
YY=04

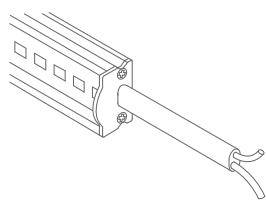


Male connector input female connector output -
2C2P
YY=06

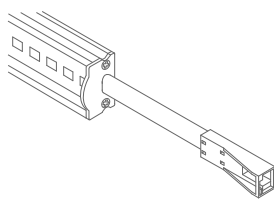


Top Input cable output connector - 1C2P+STopo
YY=08

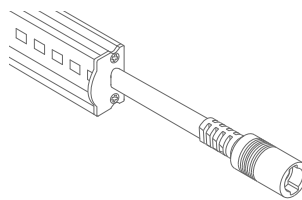
ZZ - Cable type.



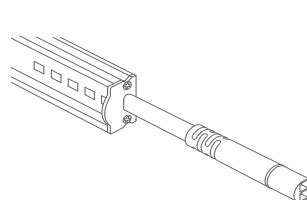
Without connector
ZZ=00



ASQC2 Connector
ZZ=27

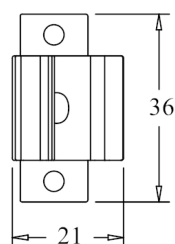
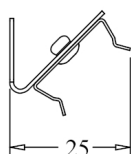
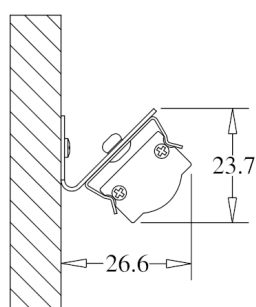


DCJ Connector
ZZ=41

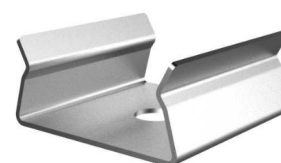


DC24 Connector
ZZ=46

Fixture option



Unit of measurement: mm
180° CLIP W/ 45° BASE Cod: 8400035115



Unit of measurement: mm
180 ° FIX CLIP Cod: 8400035111



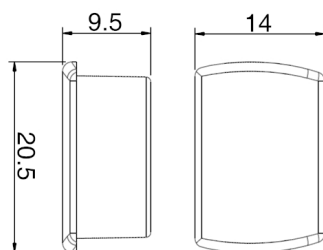
Unit of measurement: mm
45 ° FIX CLIP Cod: 8400035112



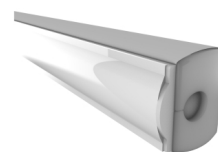
Unit of measurement: mm
ROTATING CLIP Cod: 8400035114



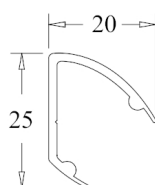
Unit of measurement: mm
180 ° PVC SUPPORT
TYPE: 180°



Unit of measurement: mm
180 ° PVC SUPPORT SILICONE CAP WHITHOUT HOLE
COLOR CODES AVAIALE: BR: 8400033071 || CZ: 8400033081



Unit of measurement: mm
180 ° PVC SUPPORT SILICONE CAP WITH HOLE
COLOR CODES AVAILABLE: BR: 8400033072 || CZ: 8400033082



Unit of measurement: mm
45 ° PVC SUPPORT
TYPE: 45°



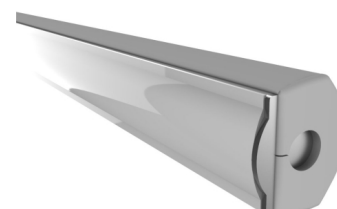
Unit of measurement: mm
45 ° PVC SUPPORT SILICONE CAP WITH HOLE
COLOR CODES AVAILABLE: BR Right: 8400033076 || CZ Right: 8400033086 || BR Left: 8400033075 || CZ Left: 8400033085



Unit of measurement: mm
CORNER PVC SUPPORT
TYPE: CORNER



Unit of measurement: mm
CORNER PVC SUPPORT SILICONE CAP
COLOR CODES AVAILABLE: BR: 8400033073 || CZ: 8400033083



Unit of measurement: mm
CORNER PVC SUPPORT SILICONE CAP
COLOR CODES AVAILABLE: BR: 8400033074 || CZ: 8400033084



Unit of measurement: mm
180° FIXATION CLIP - POLYCARBONATE Cod: 8400035117



Unit of measurement: mm
FIXATION SUPPORT - POLYCARBONATE Cod: 8400035119