

## Descrição



A Barra LED tem como finalidade criar um novo conceito de iluminação e reduzir consideravelmente os consumos energéticos.

Margem da temperatura de cor de 3 SDCM tendo como referencia o centro da elipse de MacAdam segundo a norma ANSI C78.377:2011.

Classe energética A+.

Os LEDs cumprem a norma Eye safety EN62471 classificados no Grupo de Risco 1.

A lente da barra em policarbonato Trirex 3030IR, cumpre as normas de segurança alimentar *food contact* FDA 21CFR 177.1580 e a norma europeia (EU) No. 10/2011.

Uma grande flexibilidade de tamanhos, (10cm a 225cm) permite adequar a composição dos tamanhos e luminosidade a cada projecto.

De fácil instalação, permite a utilização de barras individuais de vários tamanhos e/ou juntar várias barras em linha contínua de forma que o espaço a iluminar seja o mais adequado.

## Características:

Fonte de Alimentação	Fonte externa LED drive voltagem constante classe II
Voltagem	24 ± 3 V DC
Corrente	1008 mA
Potência	24 ± 0.5 W
Tempo de Vida Útil	60.000 horas (L70 - 55°C @ 65%H) *
Feixe de luz	120 ± 5° **
Abertura de luz	Transparente: 135 ± 5° Difuso: 195 ± 5° ***
Nº de LEDs	288 - SMD
Temp. Funcionamento	-20 a 40 °C
Isolamento	Classe III
Grau de protecção	IP42
Conservação Luminosa	LM80 (Relatório disponível: <a href="#">LM-80 9000hrs</a> )
Certificado	CE / RoHs

\* Depreciação luminosa baseada no L70.

\*\* Feixe de luz: 50% da lum. máxima.

\*\*\* Abertura de luz: 10% da lum. máxima.

## Características Luminotécnicas:

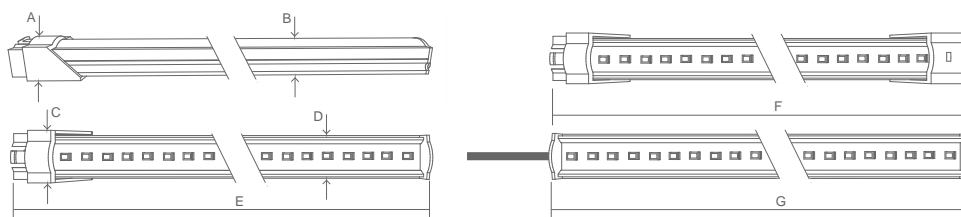
Referência	Descrição	Fluxo Lum. (Lm)*	Efi. (Lm/W)	Temperatura Cor (K)**	Cor	CRI >	Tipo de Lente
11180032111 <a href="#">XXYYZZ</a>	LLED Barra 24V 180 WW303 HE Clear	2951	123	3045 ± 84	Quente	80	Transparente
11180024111 <a href="#">XXYYZZ</a>	LLED Barra 24V 180 NW403 Clear	2946	123	3986 ± 144	Neutro	80	Transparente
11180034111 <a href="#">XXYYZZ</a>	LLED Barra 24V 180 NW403 HE Clear	3088	129	3986 ± 144	Neutro	80	Transparente
11180025111 <a href="#">XXYYZZ</a>	LLED Barra 24V 180 CW503 Clear	2946	123	5029 ± 186	Frio	80	Transparente
11180036111 <a href="#">XXYYZZ</a>	LLED Barra 24V 180 CW573 HE Clear	3088	129	5668 ± 207	Frio	80	Transparente
11180027111 <a href="#">XXYYZZ</a>	LLED Barra 24V 180 CW653 Clear	2946	123	6536 ± 279	Frio	80	Transparente
11180032112 <a href="#">XXYYZZ</a>	LLED Barra 24V 180 WW303 HE Frost	2534	106	3045 ± 84	Quente	80	Difuso
11180024112 <a href="#">XXYYZZ</a>	LLED Barra 24V 180 NW403 Frost	2410	100	3986 ± 144	Neutro	80	Difuso
11180034112 <a href="#">XXYYZZ</a>	LLED Barra 24V 180 NW403 HE Frost	2651	110	3986 ± 144	Neutro	80	Difuso
11180025112 <a href="#">XXYYZZ</a>	LLED Barra 24V 180 CW503 Frost	2410	100	5029 ± 186	Frio	80	Difuso
11180036112 <a href="#">XXYYZZ</a>	LLED Barra 24V 180 CW573 HE Frost	2651	110	5668 ± 207	Frio	80	Difuso
11180027112 <a href="#">XXYYZZ</a>	LLED Barra 24V 180 CW653 Frost	2410	100	6536 ± 279	Frio	80	Difuso

\* Fluxo Luminoso ± 7.5%

\*\* Outras temperaturas de cor disponíveis sob encomenda.



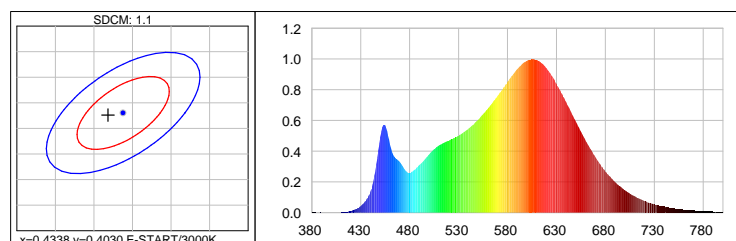
## Dimensões



A (mm)	B (mm)	C (mm)	D (mm)	E (mm)	F (mm)	G (mm)
15	12	20	17	1819	1835	1804

## Dados Fotométricos

### Branco quente 3000K 3SDCM



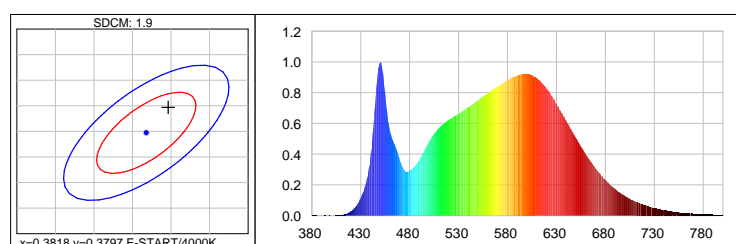
Photometric Parameters  
EEI: 0.14

Energy Efficiency Class: A+ (EU 874-2012)

#### CIE Colorimetric Parameters

Chromaticity coordinates:  $x=0.4318$   $y=0.4026$   $u(u')=0.2479$   $v=0.3467$   $v'=0.5200$   
CCT:  $T_c=3075K$  ( $duv=0.00012$ ) CRI:  $R_a=84.9$  Color Ratio:  $R=0.229$   $G=0.739$   $B=0.032$

### Branco neutro 4000K 3SDCM



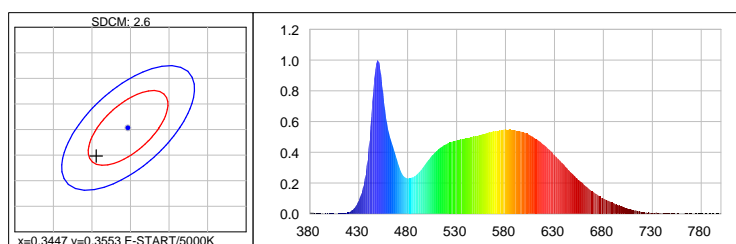
Photometric Parameters  
EEI: 0.13

Energy Efficiency Class: A+ (EU 874-2012)

#### CIE Colorimetric Parameters

Chromaticity coordinates:  $x=0.3846$   $y=0.3847$   $u(u')=0.2247$   $v=0.3371$   $v'=0.5056$   
CCT:  $T_c=3947K$  ( $duv=0.00246$ ) CRI:  $R_a=84.5$  Color Ratio:  $R=0.186$   $G=0.777$   $B=0.037$

## Branco frio 5000K 3SDCM



### Photometric Parameters

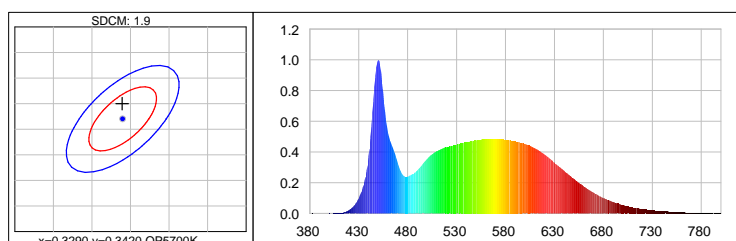
EEL: 0.15 Energy Efficiency Class: A+ (EU 874-2012)

### CIE Colorimetric Parameters

Chromaticity coordinates:  $x=0.3406$   $y=0.3498$   $u(u')=0.2090$   $v=0.3221$   $v'=0.4831$

CCT:  $T_c=5172K$  ( $duv=0.00096$ ) CRI:  $R_a=85.4$  Color Ratio:  $R=0.156$   $G=0.797$   $B=0.047$

## Branco frio 5700K 3SDCM



### Photometric Parameters

EEL: 0.14

Energy Efficiency Class: A+ (EU 874-2012)

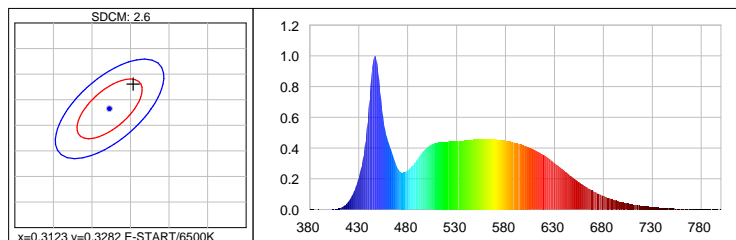
### CIE Colorimetric Parameters

Chromaticity coordinates:  $x=0.3289$   $y=0.3450$

$u(u')=0.2030$   $v=0.3193$   $v'=0.4790$

CCT:  $T_c=5654K$  ( $duv=0.00356$ ) CRI:  $R_a=86.6$  Color Ratio:  $R=0.147$   $G=0.800$   $B=0.053$

## Branco frio 6500K 3SDCM



### Photometric Parameters

EEL: 0.15

Energy Efficiency Class: A+ (EU 874-2012)

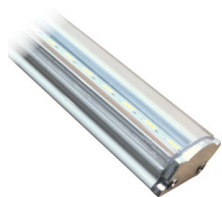
### CIE Colorimetric Parameters

Chromaticity coordinates:  $x=0.3154$   $y=0.3330$   $u(u')=0.1982$   $v=0.3139$   $v'=0.4709$

CCT:  $T_c=6338K$  ( $duv=0.00393$ ) CRI:  $R_a=87.4$  Color Ratio:  $R=0.140$   $G=0.803$   $B=0.057$

## Opções

### Tipo de Lente



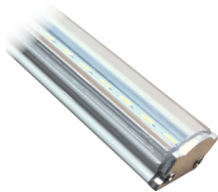
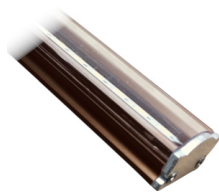
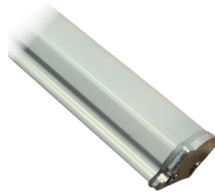
Transparente



Difuso

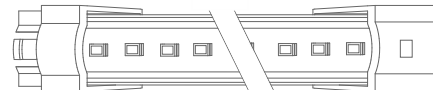
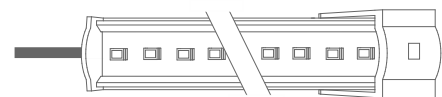
**XXYYZZ** - Os últimos seis algarismos são opções adicionais.

**XX** - Acabamento do corpo da barra.

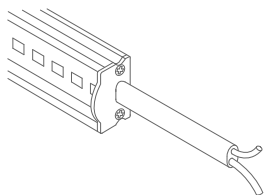

Alumínio natural  
XX=01

Alumínio branco  
XX=02

Alumínio castanho  
XX=03

Policarbonato Frost  
XX=81

**YY** - Modo de ligação da barra.

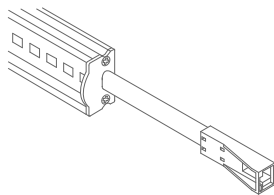

Entrada cabo topo  
YY=01

Entrada conector macho - 1C2P  
YY=04

Entrada conector macho saída conector fêmea -  
2C2P  
YY=06

Entrada cabo topo saída conector - 1C2P+STopo  
YY=08

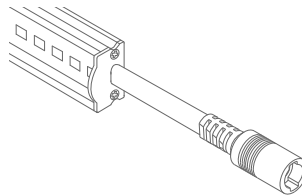
ZZ - Tipo de cabo.



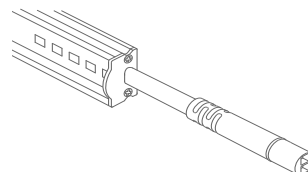
Sem conector  
ZZ=00



Conector ASQC2  
ZZ=27

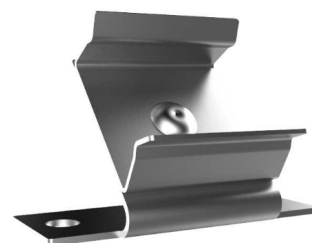
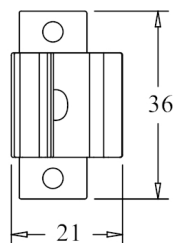
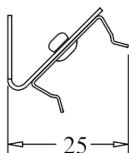
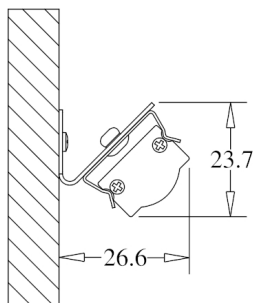


Conector DCJ  
ZZ=41

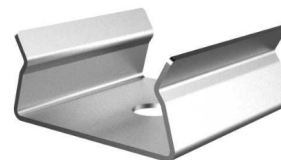
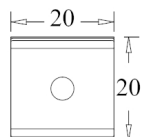
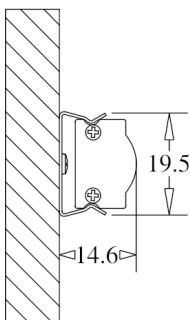


Conector DC24  
ZZ=46

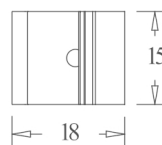
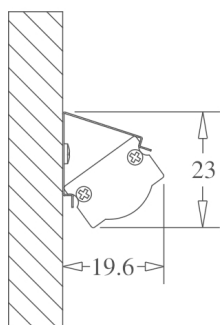
### Opções de Fixação



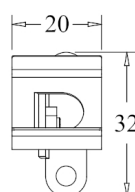
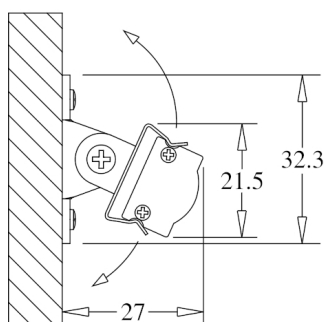
Unidade de medida: mm  
CLIP 180 ° C/ BASE 45 ° Cod: 8400035115



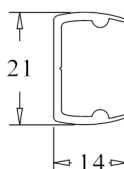
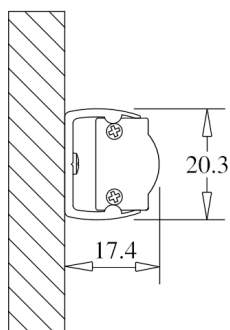
Unidade de medida: mm  
CLIP FIXO 180 ° Cod: 8400035111



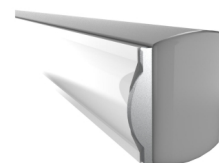
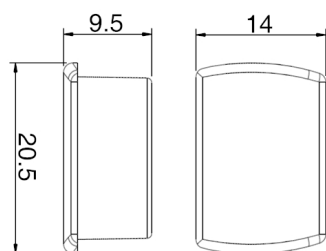
Unidade de medida: mm  
CLIP FIXO 45 ° Cod: 8400035112



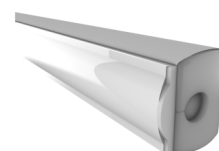
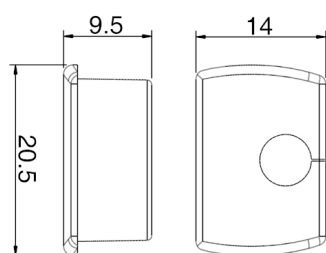
Unidade de medida: mm  
CLIP ROTATIVO Cod: 8400035114



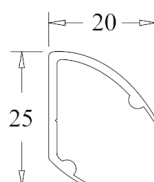
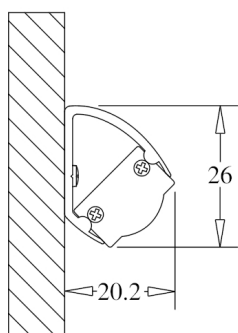
Unidade de medida: mm  
SUPORTE PVC 180°  
TIPO: 180°



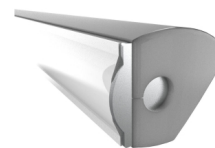
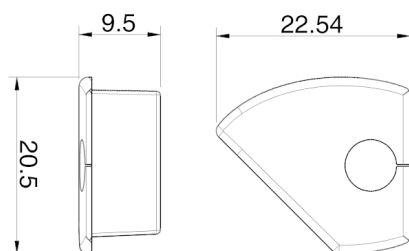
Unidade de medida: mm  
TAMPA SILICONE SUPORTE PVC 180 ° S/ FURO  
CÓDIGOS CORES DISPONÍVEIS: BR: 8400033071 || CZ: 8400033081



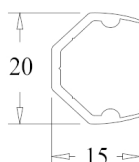
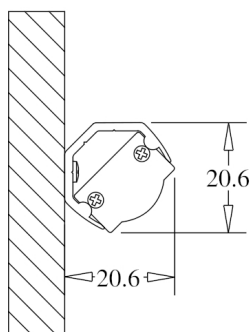
Unidade de medida: mm  
TAMPA SILICONE SUPORTE PVC 180 ° C/ FURO  
CÓDIGOS CORES DISPONÍVEIS: BR: 8400033072 || CZ: 8400033082



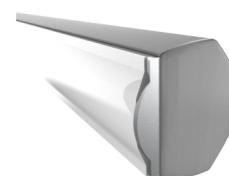
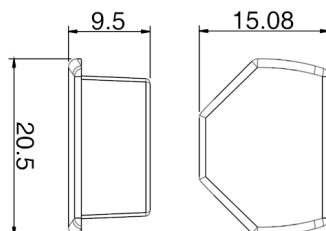
Unidade de medida: mm  
SUPORTE PVC 45°  
TIPO: 45°



Unidade de medida: mm  
TAMPA SILICONE SUPORTE PVC 45 ° C/ FURO  
CÓDIGOS CORES DISPONÍVEIS: BR Dir: 8400033076 || CZ Dir: 8400033086 || BR Esq: 8400033075 || CZ Esq: 8400033085

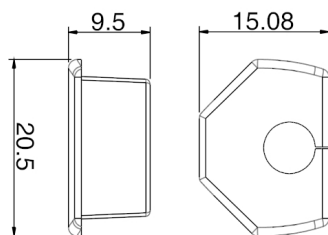


Unidade de medida: mm  
SUPORTE PVC DE CANTO  
TIPO: CANTO

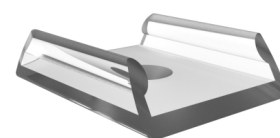
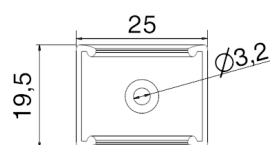
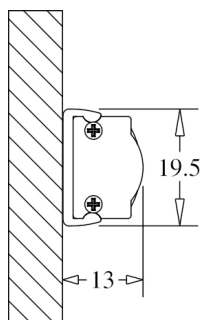


Unidade de medida: mm  
TAMPA SILICONE SUPORTE PVC CANTO  
CÓDIGOS CORES DISPONÍVEIS: BR: 8400033073 || CZ: 8400033083

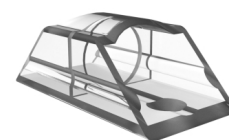
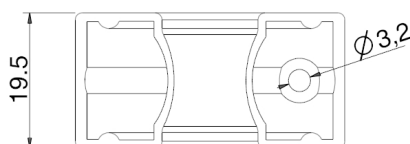
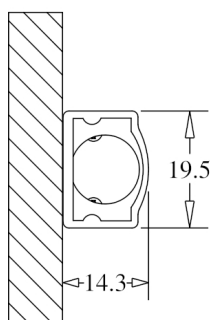




Unidade de medida: mm  
TAMPA SILICONE SUPORTE PVC CANTO  
CÓDIGOS CORES DISPONÍVEIS: BR: 8400033074 || CZ: 8400033084



Unidade de medida: mm  
CLIP FIXAÇÃO 180 ° - POLICARBONATO Cod: 8400035117



Unidade de medida: mm  
SUPORTE FIXAÇÃO - POLICARBONATO Cod: 8400035119