

Description



The Eco² LED Bars, just like our 3s Led Bars or ECO, aims to create a new lighting concept and considerably reduce even more energy consumptions than previous versions.

Color temperature tolerance of 3 SDCM MacAdam ellipses, defined by ANSI C78.377:2011 LEDs are classified as Risk Group 1 according standard EN62471.

Photobiological Safety of Lamps and Lamp Systems. Our polycarbonate lent Trirex 3030IR, meets the standard for Food contact FDA 21CFR 177.1580 and (EU) No. 10/2011 for European Union.

Huge flexibility size(90-2250mm) allows size and lighting composition for each project.

Easy to install, allows the use of single bars for each sizes, or join several continuous bars so that the lighting space is suitable.

Technical Features:

Power source	Class II constant voltage external LED drive power supply
Voltage	24 ± 3 V DC
Current	475 mA
Power	11.4 ± 0.5W
Useful Lifetime	60.000 hours (L70 - 55°C @ 65%H) *
Beam angle	120 ± 5° **
Field angle	Clear: 135 ± 5° Frost: 195 ± 5° ***
Nr of LEDs	140 - SMD
Working Temp.	-20 to 40 °C
Isolation	Class III
Protection degree	IP42
Lumen maintenance	LM80 (Report available: LM-80 9000hrs)
Certificate	CE / RoHs

*Luminosity depreciation based on L70.

**Beam angle: 50% of maximum lum.

***Field angle: 10% of maximum lum.

Light Technical Data:

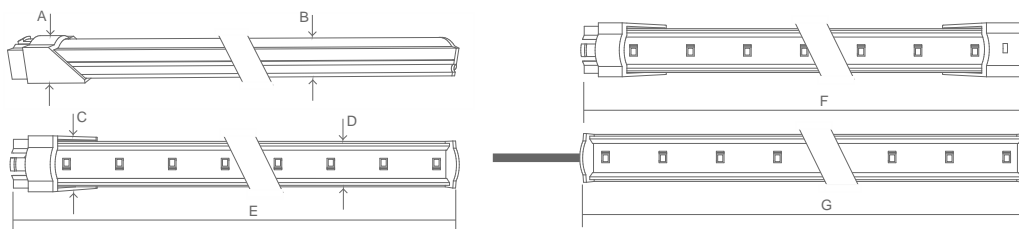
Reference	Description	Lum. flux (Lm)*	Eff. (Lm/W)	Color Temp. (K)**	Color	CRI >	Lens type
11187532161 XXYYZZ	LLED Barra 24V 190 WW303 HE ECO ² DL Clear	1335	117	3045 ± 84	Warm	80	Clear
11187542161 XXYYZZ	LLED Barra 24V 190 WW303 E1 ECO ² DL Clear	1385	121	3045 ± 84	Warm	80	Clear
11187534161 XXYYZZ	LLED Barra 24V 190 NW403 HE ECO ² DL Clear	1396	122	3986 ± 144	Neutral	80	Clear
11187544161 XXYYZZ	LLED Barra 24V 190 NW403 E1 ECO ² DL Clear	1464	128	3986 ± 144	Neutral	80	Clear
11187525161 XXYYZZ	LLED Barra 24V 190 CW503 ECO ² DL Clear	1229	108	5029 ± 186	Cool	80	Clear
11187536161 XXYYZZ	LLED Barra 24V 190 CW573 HE ECO ² DL Clear	1396	122	5668 ± 207	Cool	80	Clear
11187527161 XXYYZZ	LLED Barra 24V 190 CW653 ECO ² DL Clear	1229	108	6536 ± 279	Cool	80	Clear
11187532162 XXYYZZ	LLED Barra 24V 190 WW303 HE ECO ² DL Frost	1048	92	3045 ± 84	Warm	80	Frost
11187542162 XXYYZZ	LLED Barra 24V 190 WW303 E1 ECO ² DL Frost	1054	92	3045 ± 84	Warm	80	Frost
11187534162 XXYYZZ	LLED Barra 24V 190 NW403 HE ECO ² DL Frost	1097	96	3986 ± 144	Neutral	80	Frost
11187544162 XXYYZZ	LLED Barra 24V 190 NW403 E1 ECO ² DL Frost	1114	98	3986 ± 144	Neutral	80	Frost
11187525162 XXYYZZ	LLED Barra 24V 190 CW503 ECO ² DL Frost	978	86	5029 ± 186	Cool	80	Frost
11187536162 XXYYZZ	LLED Barra 24V 190 CW573 HE ECO ² DL Frost	1097	96	5668 ± 207	Cool	80	Frost
11187527162 XXYYZZ	LLED Barra 24V 190 CW653 ECO ² DL Frost	978	86	6536 ± 279	Cool	80	Frost

* Luminous flux ± 7.5%

* Other color temperatures available upon request



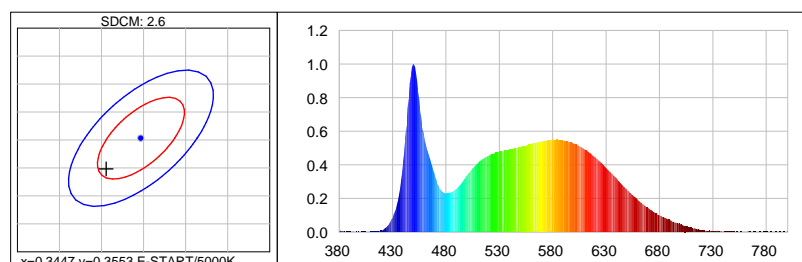
Dimensions



A (mm)	B (mm)	C (mm)	D (mm)	E (mm)	F (mm)	G (mm)
15	12	20	17	1894	1910	1879

Photometric Data

Cool white 5000K 3SDCM



Photometric Parameters

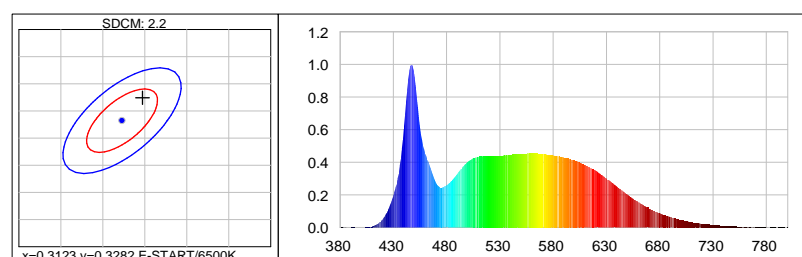
EEL: 0.15 Energy Efficiency Class: A+ (EU 874-2012)

CIE Colorimetric Parameters

Chromaticity coordinates: $x=0.3406$ $y=0.3498$ $u(u')=0.2090$ $v=0.3221$ $v'=0.4831$

CCT: $T_c=5172K$ ($duv=0.00096$) CRI: $R_a=85.4$ Color Ratio: $R=0.156$ $G=0.797$ $B=0.047$

Cool white 6500K 3SDCM



Photometric Parameters

EEL: 0.15

Energy Efficiency Class: A+ (EU 874-2012)

CIE Colorimetric Parameters

Chromaticity coordinates: $x=0.3147$ $y=0.3324$

$u(u')=0.1980$ $v=0.3136$ $v'=0.4704$

CCT: $T_c=6374K$ ($duv=0.00392$)

CRI: $R_a=87.8$

Color Ratio: $R=0.140$ $G=0.802$ $B=0.058$

Options

Cover type



Clear



Frost

XXYYZZ - The last six digits are additional options.

XX - Bar body finishing.


Natural Aluminum
XX=01

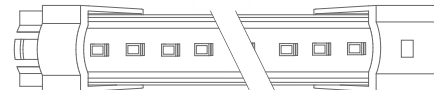
White Aluminum
XX=02

Brown Aluminum
XX=03

Polycarbonate
XX=81

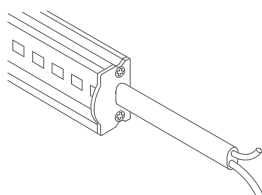
YY - Bar connection.


Top Input cable
YY=01

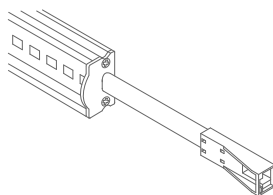
Male connector input - 1C2P
YY=04

Male connector input female connector output -
2C2P
YY=06

Top Input cable output connector - 1C2P+STopo
YY=08

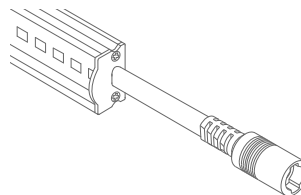
ZZ - Cable type.



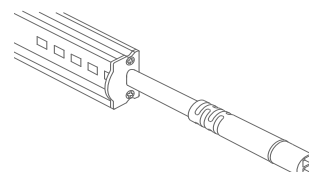
Without connector
ZZ=00



ASQC2 Connector
ZZ=27

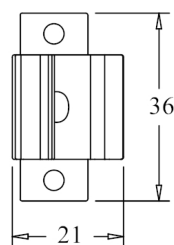
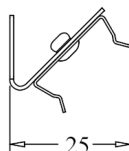
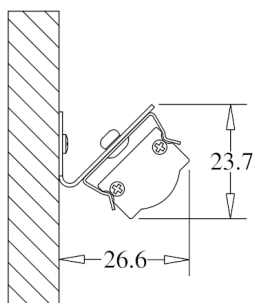


DCJ Connector
ZZ=41

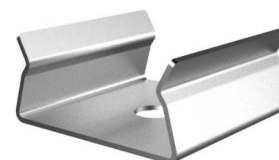
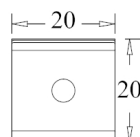
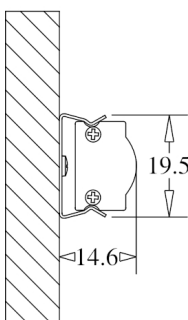


DC24 Connector
ZZ=46

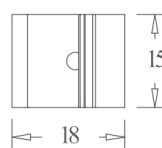
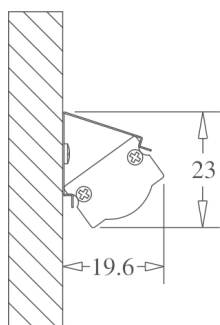
Fixture option



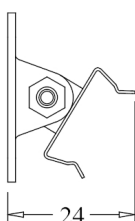
Unit of measurement: mm
180° CLIP W/ 45° BASE Cod: 8400035115



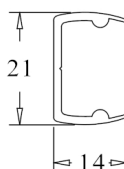
Unit of measurement: mm
180 ° FIX CLIP Cod: 8400035111



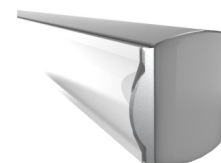
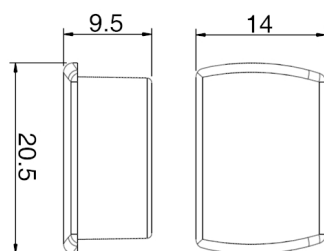
Unit of measurement: mm
45 ° FIX CLIP Cod: 8400035112



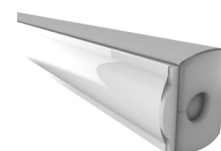
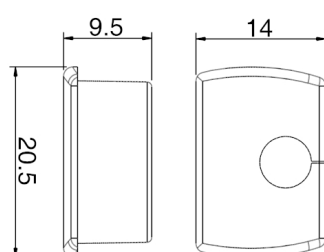
Unit of measurement: mm
ROTATING CLIP Cod: 8400035114



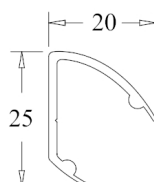
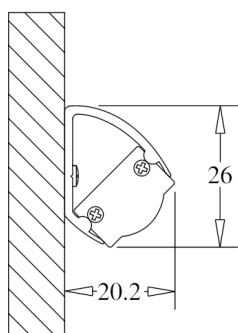
Unit of measurement: mm
180 ° PVC SUPPORT
TYPE: 180°



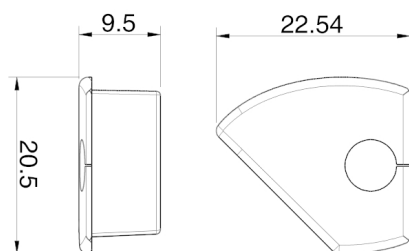
Unit of measurement: mm
180 ° PVC SUPPORT SILICONE CAP WHITHOUT HOLE
COLOR CODES AVAIALE: BR: 8400033071 || CZ: 8400033081



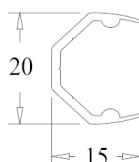
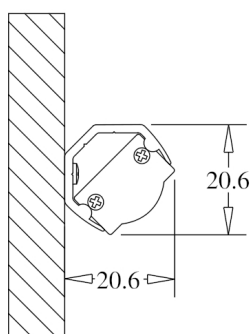
Unit of measurement: mm
180 ° PVC SUPPORT SILICONE CAP WITH HOLE
COLOR CODES AVAIALE: BR: 8400033072 || CZ: 8400033082



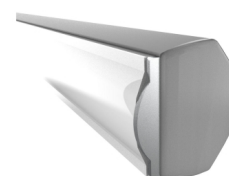
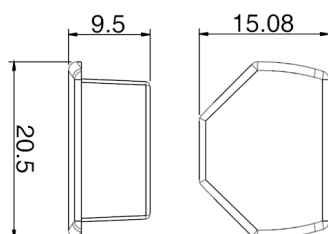
Unit of measurement: mm
45 ° PVC SUPPORT
TYPE: 45°



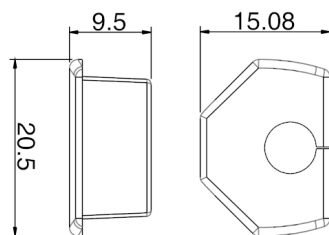
Unit of measurement: mm
 45 ° PVC SUPPORT SILICONE CAP WITH HOLE
 COLOR CODES AVAIALE: BR Right: 8400033076 || CZ Right: 8400033086 || BR Left: 8400033075 || CZ Left: 8400033085



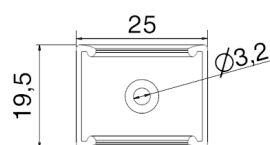
Unit of measurement: mm
 CORNER PVC SUPPORT
 TYPE: CORNER



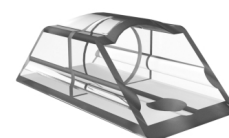
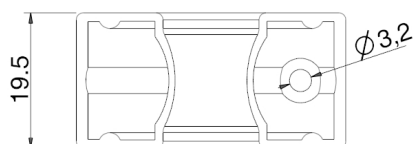
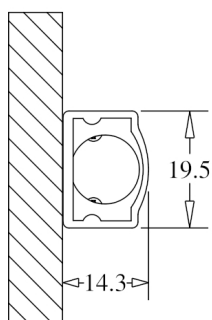
Unit of measurement: mm
 CORNER PVC SUPPORT SILICONE CAP
 COLOR CODES AVAIALE: BR: 8400033073 || CZ: 8400033083



Unit of measurement: mm
 CORNER PVC SUPPORT SILICONE CAP
 COLOR CODES AVAILABLE: BR: 8400033074 || CZ: 8400033084



Unit of measurement: mm
 180° FIXATION CLIP - POLYCARBONATE Cod: 8400035117



Unit of measurement: mm
 FIXATION SUPPORT - POLYCARBONATE Cod: 8400035119