

Description



The Eco² LED Bars, just like our 3s Led Bars or ECO, aims to create a new lighting concept and considerably reduce even more energy consumptions than previous versions.

Color temperature tolerance of 3 SDCM MacAdam ellipses, defined by ANSI C78.377:2011 LEDs are classified as Risk Group 1 according standard EN62471.

Photobiological Safety of Lamps and Lamp Systems. Our polycarbonate lent Trirex 3030IR, meets the standard for Food contact FDA 21CFR 177.1580 and (EU) No. 10/2011 for European Union.

Huge flexibility size(90-2250mm) allows size and lighting composition for each project.

Easy to install, allows the use of single bars for each sizes, or join several continuous bars so that the lighting space is suitable.

Technical Features:

Power source	Class II constant voltage external LED drive power supply
Voltage	24 ± 3 V DC
Current	499 mA
Power	12.0 ± 0.5W
Useful Lifetime	60.000 hours (L70 - 55°C @ 65%H) *
Beam angle	120 ± 5° **
Field angle	Clear: 135 ± 5° Frost: 195 ± 5° ***
Nr of LEDs	146 - SMD
Working Temp.	-20 to 40 °C
Isolation	Class III
Protection degree	IP42
Lumen maintenance	LM80 (Report available: LM-80 9000hrs)
Certificate	CE / RoHs

*Luminosity depreciation based on L70.

**Beam angle: 50% of maximum lum.

***Field angle: 10% of maximum lum.

Light Technical Data:

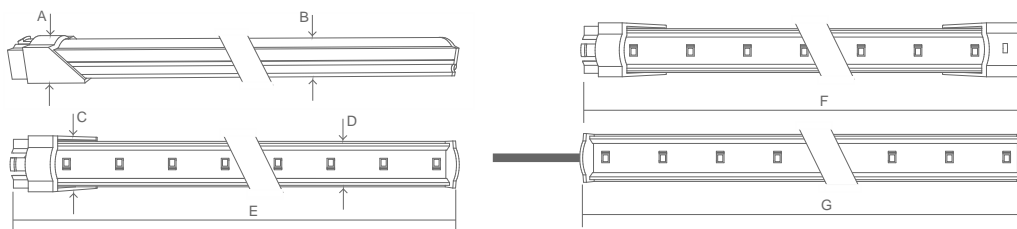
Reference	Description	Lum. flux (Lm)*	Eff. (Lm/W)	Color Temp. (K)**	Color	CRI >	Lens type
11195032161 XXYYZZ	LLED Barra 24V 195 WW303 HE ECO ² DL Clear	1393	116	3045 ± 84	Warm	80	Clear
11195042161 XXYYZZ	LLED Barra 24V 195 WW303 E1 ECO ² DL Clear	1445	120	3045 ± 84	Warm	80	Clear
11195034161 XXYYZZ	LLED Barra 24V 195 NW403 HE ECO ² DL Clear	1457	121	3986 ± 144	Neutral	80	Clear
11195044161 XXYYZZ	LLED Barra 24V 195 NW403 E1 ECO ² DL Clear	1527	127	3986 ± 144	Neutral	80	Clear
11195025161 XXYYZZ	LLED Barra 24V 195 CW503 ECO ² DL Clear	1282	107	5029 ± 186	Cool	80	Clear
11195036161 XXYYZZ	LLED Barra 24V 195 CW573 HE ECO ² DL Clear	1457	121	5668 ± 207	Cool	80	Clear
11195027161 XXYYZZ	LLED Barra 24V 195 CW653 ECO ² DL Clear	1282	107	6536 ± 279	Cool	80	Clear
11195032162 XXYYZZ	LLED Barra 24V 195 WW303 HE ECO ² DL Frost	1094	91	3045 ± 84	Warm	80	Frost
11195042162 XXYYZZ	LLED Barra 24V 195 WW303 E1 ECO ² DL Frost	1099	92	3045 ± 84	Warm	80	Frost
11195034162 XXYYZZ	LLED Barra 24V 195 NW403 HE ECO ² DL Frost	1144	95	3986 ± 144	Neutral	80	Frost
11195044162 XXYYZZ	LLED Barra 24V 195 NW403 E1 ECO ² DL Frost	1162	97	3986 ± 144	Neutral	80	Frost
11195025162 XXYYZZ	LLED Barra 24V 195 CW503 ECO ² DL Frost	1020	85	5029 ± 186	Cool	80	Frost
11195036162 XXYYZZ	LLED Barra 24V 195 CW573 HE ECO ² DL Frost	1144	95	5668 ± 207	Cool	80	Frost
11195027162 XXYYZZ	LLED Barra 24V 195 CW653 ECO ² DL Frost	1020	85	6536 ± 279	Cool	80	Frost

* Luminous flux ± 7.5%

* Other color temperatures available upon request



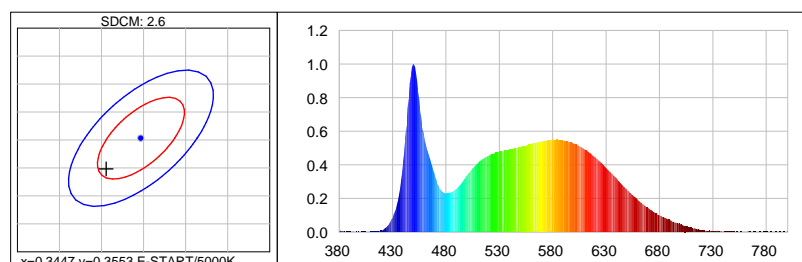
Dimensions



A (mm)	B (mm)	C (mm)	D (mm)	E (mm)	F (mm)	G (mm)
15	12	20	17	1969	1985	1954

Photometric Data

Cool white 5000K 3SDCM



Photometric Parameters

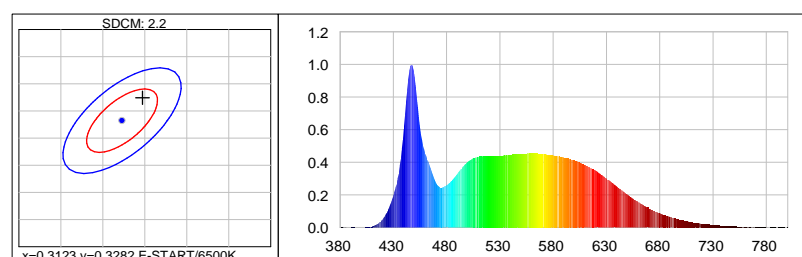
EEL: 0.15 Energy Efficiency Class: A+ (EU 874-2012)

CIE Colorimetric Parameters

Chromaticity coordinates: $x=0.3406$ $y=0.3498$ $u(u')=0.2090$ $v=0.3221$ $v'=0.4831$

CCT: $T_c=5172K$ ($duv=0.00096$) CRI: $R_a=85.4$ Color Ratio: $R=0.156$ $G=0.797$ $B=0.047$

Cool white 6500K 3SDCM



Photometric Parameters

EEL: 0.15

Energy Efficiency Class: A+ (EU 874-2012)

CIE Colorimetric Parameters

Chromaticity coordinates: $x=0.3147$ $y=0.3324$

$u(u')=0.1980$ $v=0.3136$ $v'=0.4704$

CCT: $T_c=6374K$ ($duv=0.00392$) CRI: $R_a=87.8$ Color Ratio: $R=0.140$ $G=0.802$ $B=0.058$

Options

Cover type



Clear



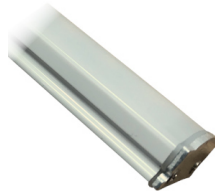
Frost

XXYYZZ - The last six digits are additional options.

XX - Bar body finishing.

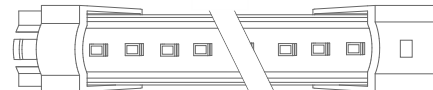
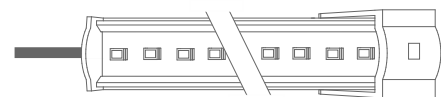

Natural Aluminum
XX=01

White Aluminum
XX=02

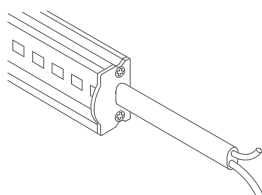
Brown Aluminum
XX=03

Polycarbonate
XX=81

YY - Bar connection.

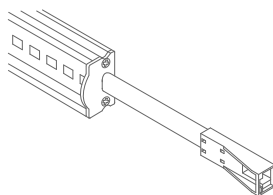

Top Input cable
YY=01

Male connector input - 1C2P
YY=04

Male connector input female connector output -
2C2P
YY=06

Top Input cable output connector - 1C2P+STopo
YY=08

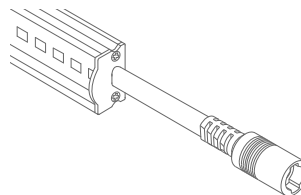
ZZ - Cable type.



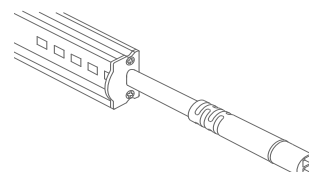
Without connector
ZZ=00



ASQC2 Connector
ZZ=27

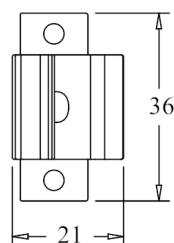
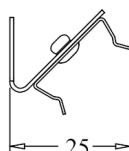
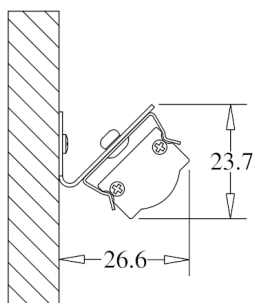


DCJ Connector
ZZ=41

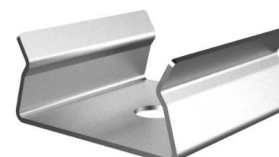
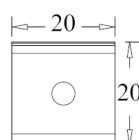
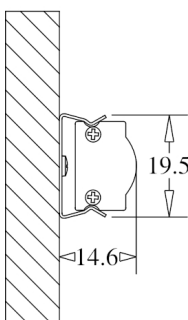


DC24 Connector
ZZ=46

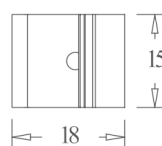
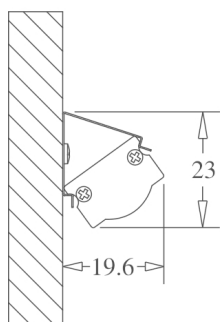
Fixture option



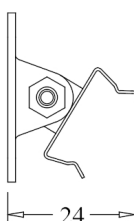
Unit of measurement: mm
180° CLIP W/ 45° BASE Cod: 8400035115



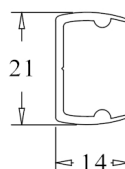
Unit of measurement: mm
180 ° FIX CLIP Cod: 8400035111



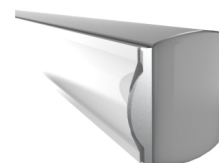
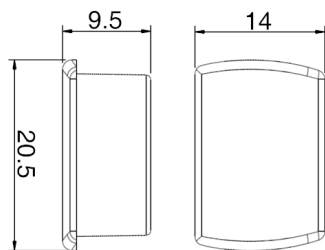
Unit of measurement: mm
45 ° FIX CLIP Cod: 8400035112



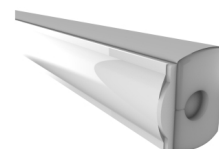
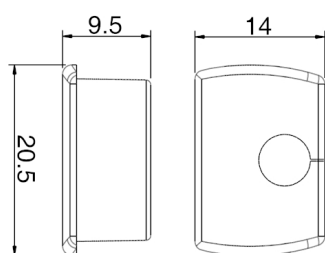
Unit of measurement: mm
ROTATING CLIP Cod: 8400035114



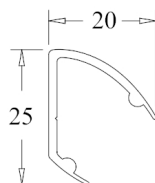
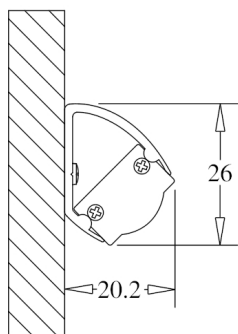
Unit of measurement: mm
180 ° PVC SUPPORT
TYPE: 180°



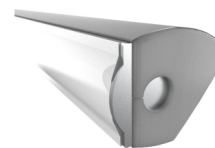
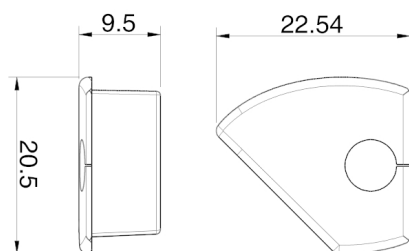
Unit of measurement: mm
180 ° PVC SUPPORT SILICONE CAP WHITHOUT HOLE
COLOR CODES AVAIALE: BR: 8400033071 || CZ: 8400033081



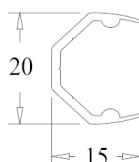
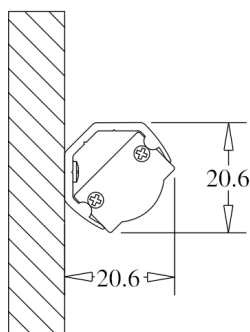
Unit of measurement: mm
180 ° PVC SUPPORT SILICONE CAP WITH HOLE
COLOR CODES AVAIALE: BR: 8400033072 || CZ: 8400033082



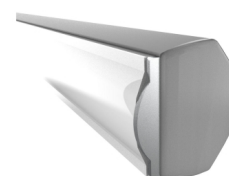
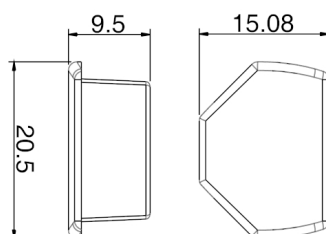
Unit of measurement: mm
45 ° PVC SUPPORT
TYPE: 45°



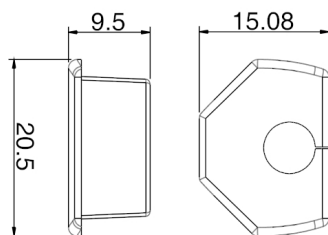
Unit of measurement: mm
45 ° PVC SUPPORT SILICONE CAP WITH HOLE
COLOR CODES AVAILABLE: BR Right: 8400033076 || CZ Right: 8400033086 || BR Left: 8400033075 || CZ Left: 8400033085



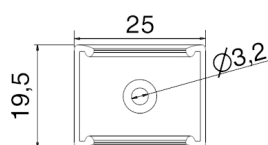
Unit of measurement: mm
CORNER PVC SUPPORT
TYPE: CORNER



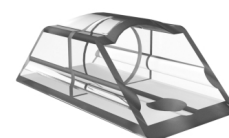
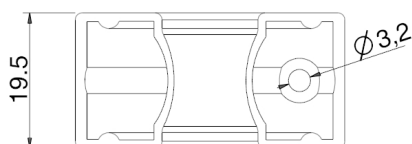
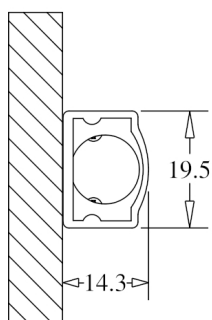
Unit of measurement: mm
CORNER PVC SUPPORT SILICONE CAP
COLOR CODES AVAILABLE: BR: 8400033073 || CZ: 8400033083



Unit of measurement: mm
 CORNER PVC SUPPORT SILICONE CAP
 COLOR CODES AVAILABLE: BR: 8400033074 || CZ: 8400033084



Unit of measurement: mm
 180° FIXATION CLIP - POLYCARBONATE Cod: 8400035117



Unit of measurement: mm
 FIXATION SUPPORT - POLYCARBONATE Cod: 8400035119