

## Description



The Eco<sup>2</sup> LED Bars, just like our 3s Led Bars or ECO, aims to create a new lighting concept and considerably reduce even more energy consumptions than previous versions.

Color temperature tolerance of 3 SDCM MacAdam ellipses, defined by ANSI C78.377:2011 LEDs are classified as Risk Group 1 according standard EN62471.

Photobiological Safety of Lamps and Lamp Systems. Our polycarbonate lent Trirex 3030IR, meets the standard for Food contact FDA 21CFR 177.1580 and (EU) No. 10/2011 for European Union.

Huge flexibility size(90-2250mm) allows size and lighting composition for each project.

Easy to install, allows the use of single bars for each sizes, or join several continuous bars so that the lighting space is suitable.

## Technical Features:

Power source	Class II constant voltage external LED drive power supply
Voltage	24 ± 3 V DC
Current	523 mA
Power	12.6 ± 0.5W
Useful Lifetime	60.000 hours (L70 - 55°C @ 65%H) *
Beam angle	120 ± 5° **
Field angle	Clear: 135 ± 5° Frost: 195 ± 5° ***
Nr of LEDs	152 - SMD
Working Temp.	-20 to 40 °C
Isolation	Class III
Protection degree	IP42
Lumen maintenance	LM80 (Report available: <a href="#">LM-80 9000hrs</a> )
Certificate	CE / RoHs

\*Luminosity depreciation based on L70.  
 \*\*Beam angle: 50% of maximum lum.  
 \*\*\*Field angle: 10% of maximum lum.

## Light Technical Data:

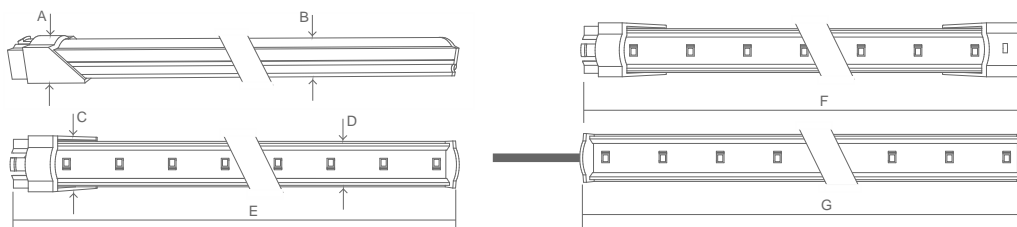
Reference	Description	Lum. flux (Lm)*	Eff. (Lm/W)	Color Temp. (K)**	Color	CRI >	Lens type
11202532161 <a href="#">XXYYZZ</a>	LLED Barra 24V 200 WW303 HE ECO <sup>2</sup> DL Clear	1451	115	3045 ± 84	Warm	80	Clear
11202542161 <a href="#">XXYYZZ</a>	LLED Barra 24V 200 WW303 E1 ECO <sup>2</sup> DL Clear	1505	119	3045 ± 84	Warm	80	Clear
11202534161 <a href="#">XXYYZZ</a>	LLED Barra 24V 200 NW403 HE ECO <sup>2</sup> DL Clear	1517	120	3986 ± 144	Neutral	80	Clear
11202544161 <a href="#">XXYYZZ</a>	LLED Barra 24V 200 NW403 E1 ECO <sup>2</sup> DL Clear	1591	126	3986 ± 144	Neutral	80	Clear
11202525161 <a href="#">XXYYZZ</a>	LLED Barra 24V 200 CW503 ECO <sup>2</sup> DL Clear	1336	106	5029 ± 186	Cool	80	Clear
11202536161 <a href="#">XXYYZZ</a>	LLED Barra 24V 200 CW573 HE ECO <sup>2</sup> DL Clear	1517	120	5668 ± 207	Cool	80	Clear
11202527161 <a href="#">XXYYZZ</a>	LLED Barra 24V 200 CW653 ECO <sup>2</sup> DL Clear	1336	106	6536 ± 279	Cool	80	Clear
11202532162 <a href="#">XXYYZZ</a>	LLED Barra 24V 200 WW303 HE ECO <sup>2</sup> DL Frost	1139	90	3045 ± 84	Warm	80	Frost
11202542162 <a href="#">XXYYZZ</a>	LLED Barra 24V 200 WW303 E1 ECO <sup>2</sup> DL Frost	1145	91	3045 ± 84	Warm	80	Frost
11202534162 <a href="#">XXYYZZ</a>	LLED Barra 24V 200 NW403 HE ECO <sup>2</sup> DL Frost	1192	95	3986 ± 144	Neutral	80	Frost
11202544162 <a href="#">XXYYZZ</a>	LLED Barra 24V 200 NW403 E1 ECO <sup>2</sup> DL Frost	1210	96	3986 ± 144	Neutral	80	Frost
11202525162 <a href="#">XXYYZZ</a>	LLED Barra 24V 200 CW503 ECO <sup>2</sup> DL Frost	1062	84	5029 ± 186	Cool	80	Frost
11202536162 <a href="#">XXYYZZ</a>	LLED Barra 24V 200 CW573 HE ECO <sup>2</sup> DL Frost	1192	95	5668 ± 207	Cool	80	Frost
11202527162 <a href="#">XXYYZZ</a>	LLED Barra 24V 200 CW653 ECO <sup>2</sup> DL Frost	1062	84	6536 ± 279	Cool	80	Frost

\* Luminous flux ± 7.5%

\* Other color temperatures available upon request



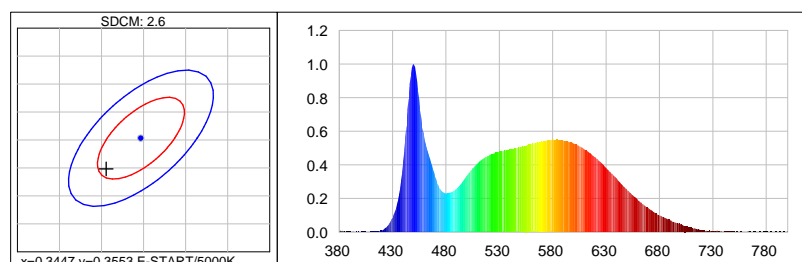
## Dimensions



A (mm)	B (mm)	C (mm)	D (mm)	E (mm)	F (mm)	G (mm)
15	12	20	17	2044	2060	2029

## Photometric Data

### Cool white 5000K 3SDCM



#### Photometric Parameters

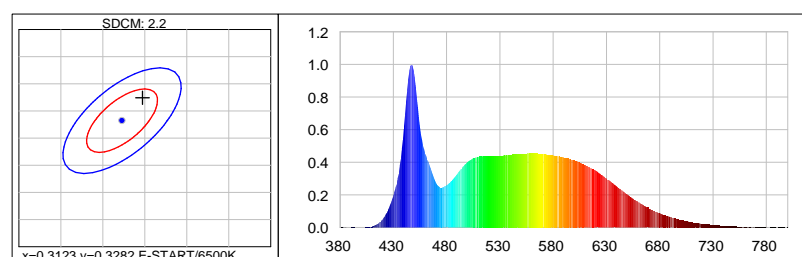
EEL: 0.15 Energy Efficiency Class: A+ (EU 874-2012)

#### CIE Colorimetric Parameters

Chromaticity coordinates:  $x=0.3406$   $y=0.3498$   $u(u')=0.2090$   $v=0.3221$   $v'=0.4831$

CCT:  $T_c=5172K$  ( $duv=0.00096$ ) CRI:  $R_a=85.4$  Color Ratio:  $R=0.156$   $G=0.797$   $B=0.047$

### Cool white 6500K 3SDCM



#### Photometric Parameters

EEL: 0.15

Energy Efficiency Class: A+ (EU 874-2012)

#### CIE Colorimetric Parameters

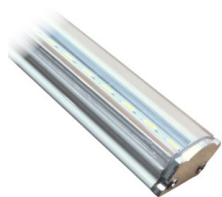
Chromaticity coordinates:  $x=0.3147$   $y=0.3324$

$u(u')=0.1980$   $v=0.3136$   $v'=0.4704$

CCT:  $T_c=6374K$  ( $duv=0.00392$ ) CRI:  $R_a=87.8$  Color Ratio:  $R=0.140$   $G=0.802$   $B=0.058$

## Options

### Cover type



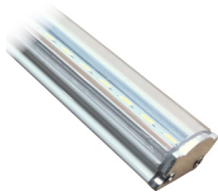
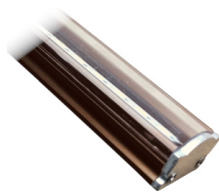
Clear



Frost

**XXYYZZ** - The last six digits are additional options.

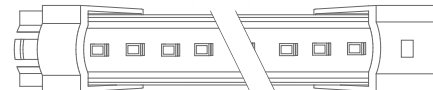
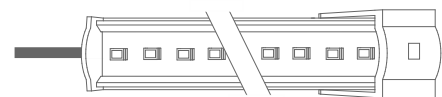
**XX** - Bar body finishing.


Natural Aluminum  
XX=01

White Aluminum  
XX=02

Brown Aluminum  
XX=03

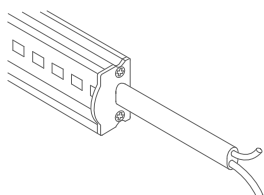
Polycarbonate  
XX=81

**YY** - Bar connection.

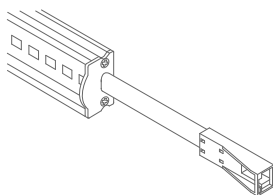

Top Input cable  
YY=01

Male connector input - 1C2P  
YY=04

Male connector input female connector output -  
2C2P  
YY=06

Top Input cable output connector - 1C2P+STopo  
YY=08

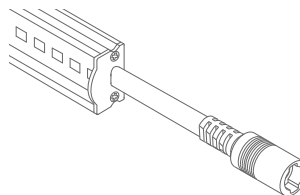
ZZ - Cable type.



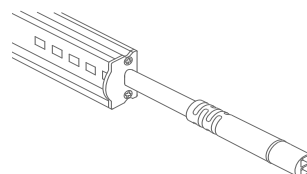
Without connector  
ZZ=00



ASQC2 Connector  
ZZ=27

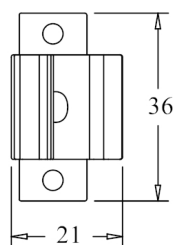
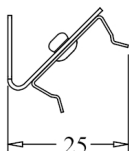
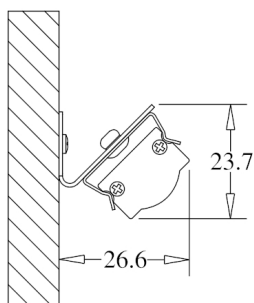


DCJ Connector  
ZZ=41

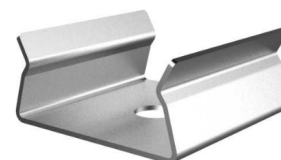
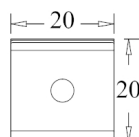
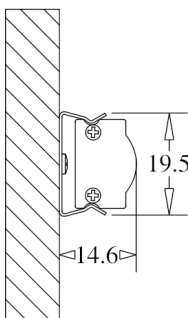


DC24 Connector  
ZZ=46

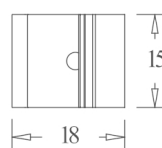
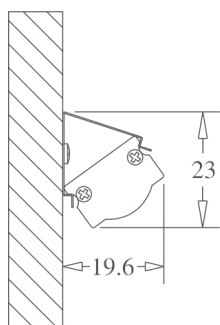
### Fixture option



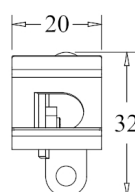
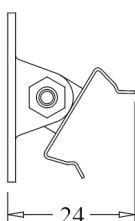
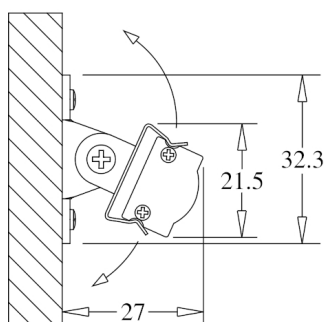
Unit of measurement: mm  
180° CLIP W/ 45° BASE Cod: 8400035115



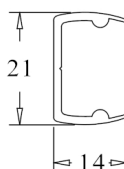
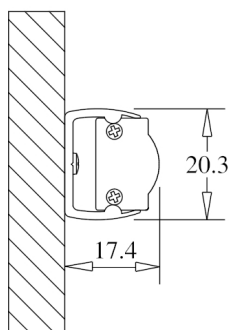
Unit of measurement: mm  
180 ° FIX CLIP Cod: 8400035111



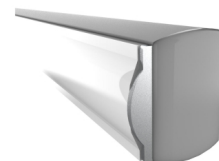
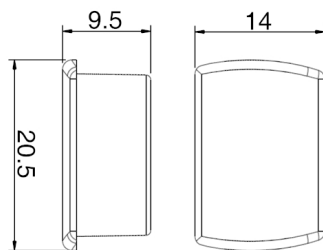
Unit of measurement: mm  
45 ° FIX CLIP Cod: 8400035112



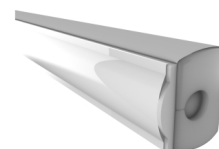
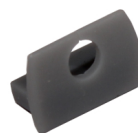
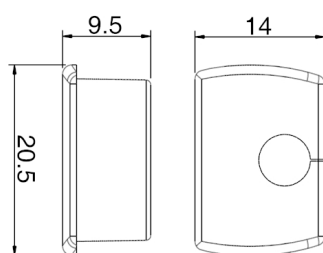
Unit of measurement: mm  
ROTATING CLIP Cod: 8400035114



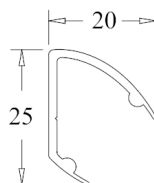
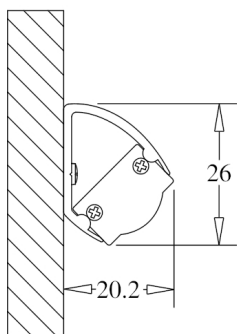
Unit of measurement: mm  
180 ° PVC SUPPORT  
TYPE: 180°



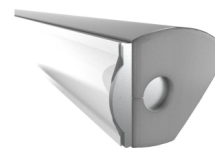
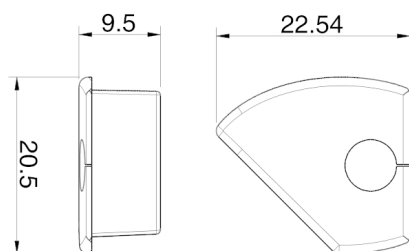
Unit of measurement: mm  
180 ° PVC SUPPORT SILICONE CAP WHITHOUT HOLE  
COLOR CODES AVAIALE: BR: 8400033071 || CZ: 8400033081



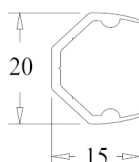
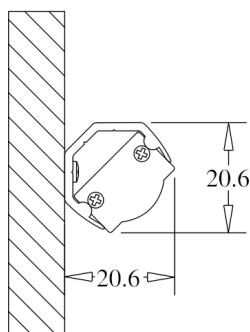
Unit of measurement: mm  
180 ° PVC SUPPORT SILICONE CAP WITH HOLE  
COLOR CODES AVAIALE: BR: 8400033072 || CZ: 8400033082



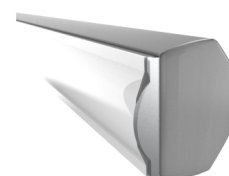
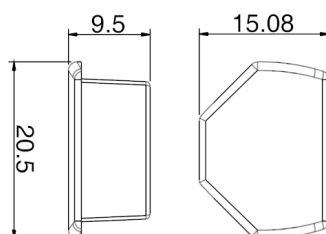
Unit of measurement: mm  
45 ° PVC SUPPORT  
TYPE: 45°



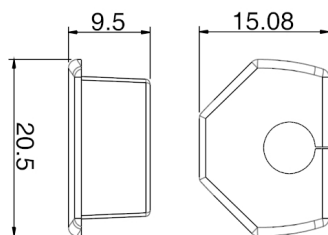
Unit of measurement: mm  
 45 ° PVC SUPPORT SILICONE CAP WITH HOLE  
 COLOR CODES AVAIALE: BR Right: 8400033076 || CZ Right: 8400033086 || BR Left: 8400033075 || CZ Left: 8400033085



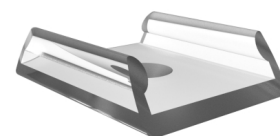
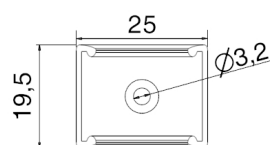
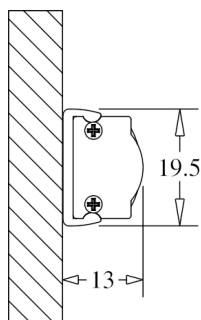
Unit of measurement: mm  
 CORNER PVC SUPPORT  
 TYPE: CORNER



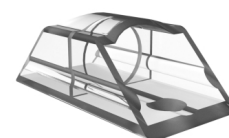
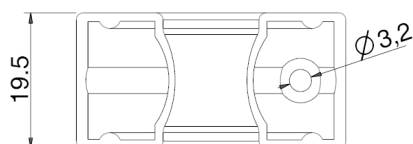
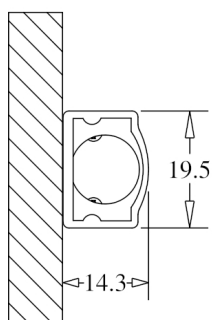
Unit of measurement: mm  
 CORNER PVC SUPPORT SILICONE CAP  
 COLOR CODES AVAIALE: BR: 8400033073 || CZ: 8400033083



Unit of measurement: mm  
CORNER PVC SUPPORT SILICONE CAP  
COLOR CODES AVAILABLE: BR: 8400033074 || CZ: 8400033084



Unit of measurement: mm  
180° FIXATION CLIP - POLYCARBONATE Cod: 8400035117



Unit of measurement: mm  
FIXATION SUPPORT - POLYCARBONATE Cod: 8400035119