

## Description



The Eco<sup>2</sup> LED Bars, just like our 3s Led Bars or ECO, aims to create a new lighting concept and considerably reduce even more energy consumptions than previous versions.

Color temperature tolerance of 3 SDCM MacAdam ellipses, defined by ANSI C78.377:2011 LEDs are classified as Risk Group 1 according standard EN62471.

Photobiological Safety of Lamps and Lamp Systems. Our polycarbonate lent Trirex 3030IR, meets the standard for Food contact FDA 21CFR 177.1580 and (EU) No. 10/2011 for European Union.

Huge flexibility size(90-2250mm) allows size and lighting composition for each project.

Easy to install, allows the use of single bars for each sizes, or join several continuous bars so that the lighting space is suitable.

## Technical Features:

Power source	Class II constant voltage external LED drive power supply
Voltage	24 ± 3 V DC
Current	571 mA
Power	13.7 ± 0.5W
Useful Lifetime	60.000 hours (L70 - 55°C @ 65%H) *
Beam angle	120 ± 5° **
Field angle	Clear: 135 ± 5° Frost: 195 ± 5° ***
Nr of LEDs	164 - SMD
Working Temp.	-20 to 40 °C
Isolation	Class III
Protection degree	IP42
Lumen maintenance	LM80 (Report available: <a href="#">LM-80 9000hrs</a> )
Certificate	CE / RoHs

\*Luminosity depreciation based on L70.

\*\*Beam angle: 50% of maximum lum.

\*\*\*Field angle: 10% of maximum lum.

## Light Technical Data:

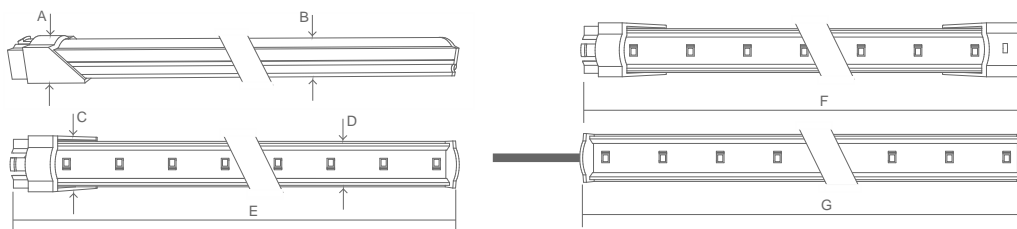
Reference	Description	Lum. flux (Lm)*	Eff. (Lm/W)	Color Temp. (K)**	Color	CRI >	Lens type
11217532161 <a href="#">XXYYZZ</a>	LLED Barra 24V 220 WW303 HE ECO <sup>2</sup> DL Clear	1566	114	3045 ± 84	Warm	80	Clear
11217542161 <a href="#">XXYYZZ</a>	LLED Barra 24V 220 WW303 E1 ECO <sup>2</sup> DL Clear	1625	119	3045 ± 84	Warm	80	Clear
11217534161 <a href="#">XXYYZZ</a>	LLED Barra 24V 220 NW403 HE ECO <sup>2</sup> DL Clear	1639	120	3986 ± 144	Neutral	80	Clear
11217544161 <a href="#">XXYYZZ</a>	LLED Barra 24V 220 NW403 E1 ECO <sup>2</sup> DL Clear	1718	125	3986 ± 144	Neutral	80	Clear
11217525161 <a href="#">XXYYZZ</a>	LLED Barra 24V 220 CW503 ECO <sup>2</sup> DL Clear	1442	105	5029 ± 186	Cool	80	Clear
11217536161 <a href="#">XXYYZZ</a>	LLED Barra 24V 220 CW573 HE ECO <sup>2</sup> DL Clear	1639	120	5668 ± 207	Cool	80	Clear
11217527161 <a href="#">XXYYZZ</a>	LLED Barra 24V 220 CW653 ECO <sup>2</sup> DL Clear	1442	105	6536 ± 279	Cool	80	Clear
11217532162 <a href="#">XXYYZZ</a>	LLED Barra 24V 220 WW303 HE ECO <sup>2</sup> DL Frost	1230	90	3045 ± 84	Warm	80	Frost
11217542162 <a href="#">XXYYZZ</a>	LLED Barra 24V 220 WW303 E1 ECO <sup>2</sup> DL Frost	1236	90	3045 ± 84	Warm	80	Frost
11217534162 <a href="#">XXYYZZ</a>	LLED Barra 24V 220 NW403 HE ECO <sup>2</sup> DL Frost	1287	94	3986 ± 144	Neutral	80	Frost
11217544162 <a href="#">XXYYZZ</a>	LLED Barra 24V 220 NW403 E1 ECO <sup>2</sup> DL Frost	1307	95	3986 ± 144	Neutral	80	Frost
11217525162 <a href="#">XXYYZZ</a>	LLED Barra 24V 220 CW503 ECO <sup>2</sup> DL Frost	1147	84	5029 ± 186	Cool	80	Frost
11217536162 <a href="#">XXYYZZ</a>	LLED Barra 24V 220 CW573 HE ECO <sup>2</sup> DL Frost	1287	94	5668 ± 207	Cool	80	Frost
11217527162 <a href="#">XXYYZZ</a>	LLED Barra 24V 220 CW653 ECO <sup>2</sup> DL Frost	1147	84	6536 ± 279	Cool	80	Frost

\* Luminous flux ± 7.5%

\* Other color temperatures available upon request



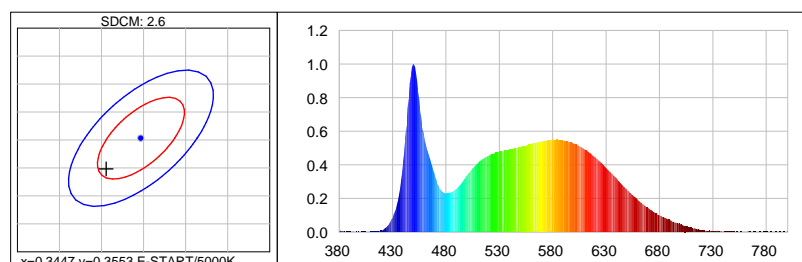
## Dimensions



A (mm)	B (mm)	C (mm)	D (mm)	E (mm)	F (mm)	G (mm)
15	12	20	17	2194	2210	2179

## Photometric Data

### Cool white 5000K 3SDCM



#### Photometric Parameters

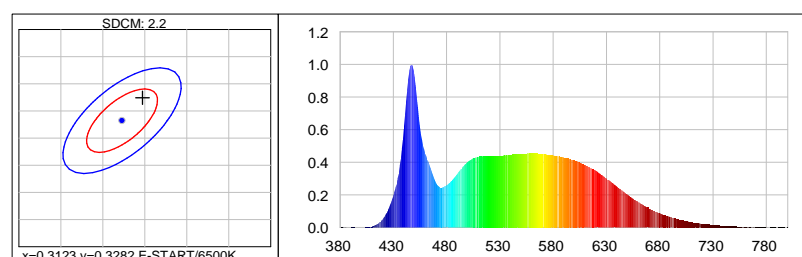
EEL: 0.15 Energy Efficiency Class: A+ (EU 874-2012)

#### CIE Colorimetric Parameters

Chromaticity coordinates:  $x=0.3406$   $y=0.3498$   $u(u')=0.2090$   $v=0.3221$   $v'=0.4831$

CCT:  $T_c=5172K$  ( $duv=0.00096$ ) CRI:  $R_a=85.4$  Color Ratio:  $R=0.156$   $G=0.797$   $B=0.047$

### Cool white 6500K 3SDCM



#### Photometric Parameters

EEL: 0.15

Energy Efficiency Class: A+ (EU 874-2012)

#### CIE Colorimetric Parameters

Chromaticity coordinates:  $x=0.3147$   $y=0.3324$

$u(u')=0.1980$   $v=0.3136$   $v'=0.4704$

CCT:  $T_c=6374K$  ( $duv=0.00392$ )

CRI:  $R_a=87.8$

Color Ratio:  $R=0.140$   $G=0.802$   $B=0.058$

## Options

### Cover type



Clear



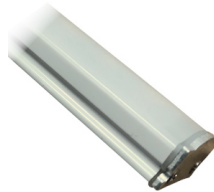
Frost

**XXYYZZ** - The last six digits are additional options.

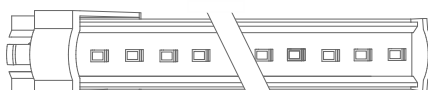
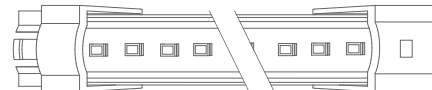
**XX** - Bar body finishing.


Natural Aluminum  
XX=01

White Aluminum  
XX=02

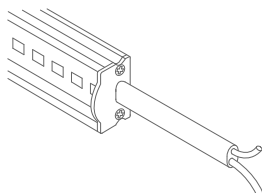
Brown Aluminum  
XX=03

Polycarbonate  
XX=81

**YY** - Bar connection.

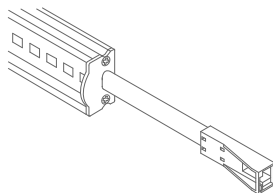

Top Input cable  
YY=01

Male connector input - 1C2P  
YY=04

Male connector input female connector output -  
2C2P  
YY=06

Top Input cable output connector - 1C2P+STopo  
YY=08

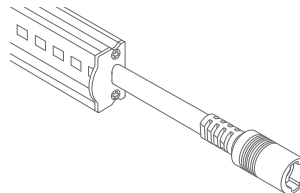
ZZ - Cable type.



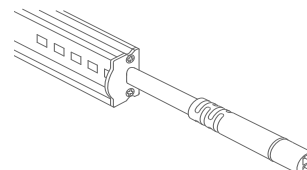
Without connector  
ZZ=00



ASQC2 Connector  
ZZ=27

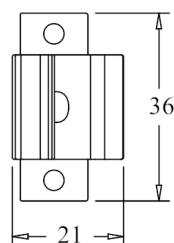
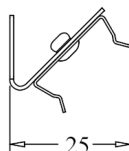
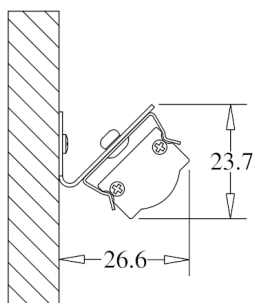


DCJ Connector  
ZZ=41

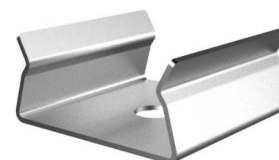
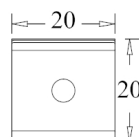
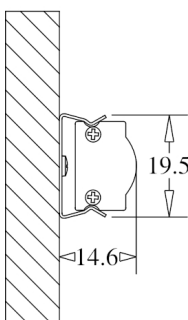


DC24 Connector  
ZZ=46

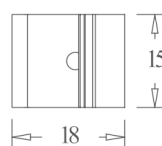
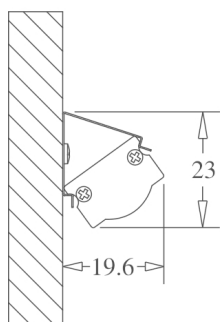
## Fixture option



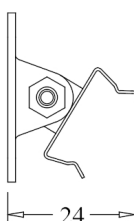
Unit of measurement: mm  
180° CLIP W/ 45° BASE Cod: 8400035115



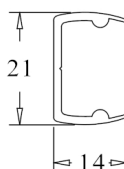
Unit of measurement: mm  
180 ° FIX CLIP Cod: 8400035111



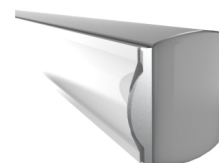
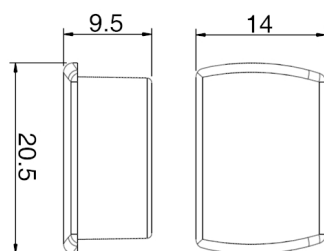
Unit of measurement: mm  
45 ° FIX CLIP Cod: 8400035112



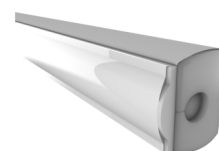
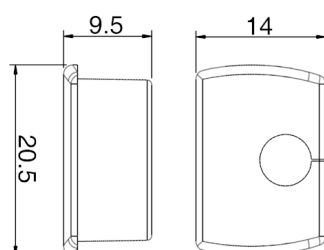
Unit of measurement: mm  
ROTATING CLIP Cod: 8400035114



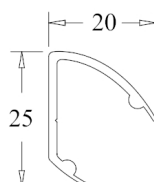
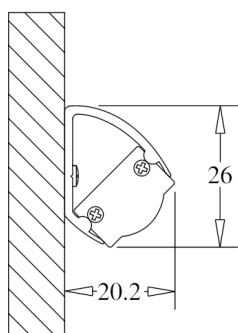
Unit of measurement: mm  
180 ° PVC SUPPORT  
TYPE: 180°



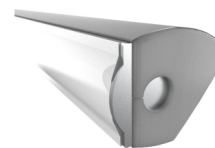
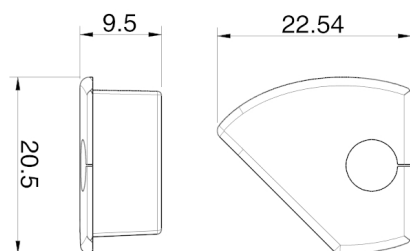
Unit of measurement: mm  
180 ° PVC SUPPORT SILICONE CAP WHITHOUT HOLE  
COLOR CODES AVAILABLE: BR: 8400033071 || CZ: 8400033081



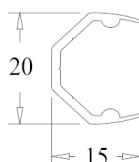
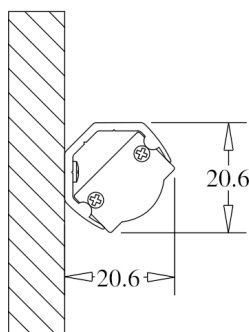
Unit of measurement: mm  
180 ° PVC SUPPORT SILICONE CAP WITH HOLE  
COLOR CODES AVAILABLE: BR: 8400033072 || CZ: 8400033082



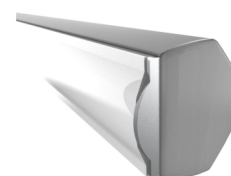
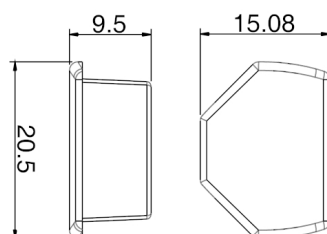
Unit of measurement: mm  
45 ° PVC SUPPORT  
TYPE: 45°



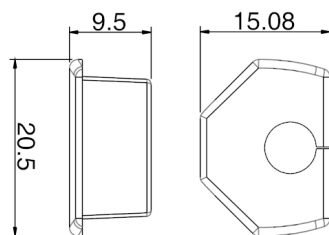
Unit of measurement: mm  
 45 ° PVC SUPPORT SILICONE CAP WITH HOLE  
 COLOR CODES AVAIALE: BR Right: 8400033076 || CZ Right: 8400033086 || BR Left: 8400033075 || CZ Left: 8400033085



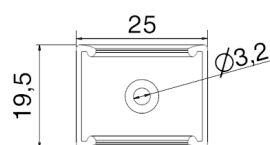
Unit of measurement: mm  
 CORNER PVC SUPPORT  
 TYPE: CORNER



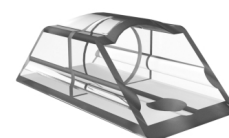
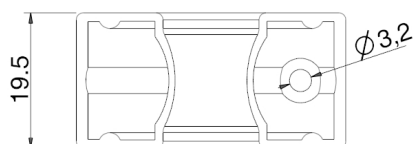
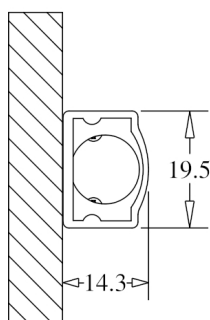
Unit of measurement: mm  
 CORNER PVC SUPPORT SILICONE CAP  
 COLOR CODES AVAIALE: BR: 8400033073 || CZ: 8400033083



Unit of measurement: mm  
CORNER PVC SUPPORT SILICONE CAP  
COLOR CODES AVAILABLE: BR: 8400033074 || CZ: 8400033084



Unit of measurement: mm  
180° FIXATION CLIP - POLYCARBONATE Cod: 8400035117



Unit of measurement: mm  
FIXATION SUPPORT - POLYCARBONATE Cod: 8400035119