

## Description



The LED bar is intended to create a new lighting concept and greatly reduce energy consumption. Color temperature tolerance of 3 SDCM MacAdam ellipse, according to ANSI C78.377: 2011.

A+ Energy class.

The LEDs meet the Eye safety standard EN62471 classified in RG-1.

The polycarbonate bar lens Trirex 3030IR, meets the food safety standards for FDA 21CFR 177.1580 and the European standard (EU) No. 10/2011.

A great flexibility of sizes, (10cm to 225cm) allows to adapt the sizes and luminosity to each project.

With easy installation, allows the use of individual bars for each of the sizes and or join several bars in a continuous line so that the space is suitably illuminated.

## Technical Features:

Power source	Class II constant voltage external LED drive power supply
Voltage	24 ± 3 V DC
Current	1260 mA
Power	30 ±1W
Useful Lifetime	60.000 hours (L70 - 55°C @ 65%H) *
Beam angle	120 ± 5° **
Field angle	Clear: 135 ± 5° Frost: 195 ± 5° ***
Nr of LEDs	360 - SMD
Working Temp.	-20 to 40 °C
Isolation	Class III
Protection degree	IP42
Lumen maintenance	LM80 (Report available: <a href="#">LM-80 9000hrs</a> )
Certificate	CE / RoHs

\*Luminosity depreciation based on L70.

\*\*Beam angle: 50% of maximum lum.

\*\*\*Field angle: 10% of maximum lum.

## Light Technical Data:

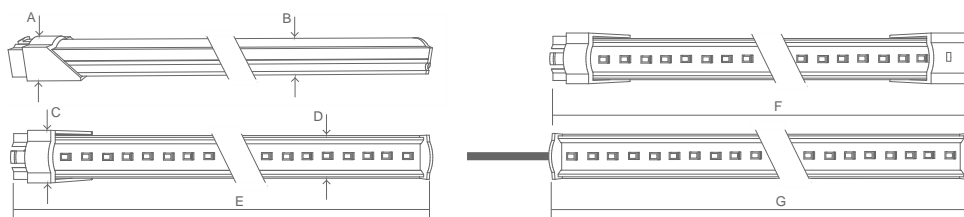
Reference	Description	Lum. flux (Lm)*	Eff. (Lm/W)	Color Temp. (K)**	Color	CRI >	Lens type
11225032111 <a href="#">XXYYZZ</a>	LLED Barra 24V 225 WW303 HE Clear	3689	123	3045 ± 84	Warm	80	Clear
11225034111 <a href="#">XXYYZZ</a>	LLED Barra 24V 225 NW403 HE Clear	3859	129	3986 ± 144	Neutral	80	Clear
11225024111 <a href="#">XXYYZZ</a>	LLED Barra 24V 225 NW403 Clear	3683	123	3986 ± 144	Neutral	80	Clear
11225025111 <a href="#">XXYYZZ</a>	LLED Barra 24V 225 CW503 Clear	3683	123	5029 ± 186	Cool	80	Clear
11225036111 <a href="#">XXYYZZ</a>	LLED Barra 24V 225 CW573 HE Clear	3859	129	5668 ± 207	Cool	80	Clear
11225027111 <a href="#">XXYYZZ</a>	LLED Barra 24V 225 CW653 Clear	3683	123	6536 ± 279	Cool	80	Clear
11225032112 <a href="#">XXYYZZ</a>	LLED Barra 24V 225 WW303 HE Frost	3168	106	3045 ± 84	Warm	80	Frost
11225034112 <a href="#">XXYYZZ</a>	LLED Barra 24V 225 NW403 HE Frost	3314	110	3986 ± 144	Neutral	80	Frost
11225024112 <a href="#">XXYYZZ</a>	LLED Barra 24V 225 NW403 Frost	3013	100	3986 ± 144	Neutral	80	Frost
11225025112 <a href="#">XXYYZZ</a>	LLED Barra 24V 225 CW503 Frost	3013	100	5029 ± 186	Cool	80	Frost
11225036112 <a href="#">XXYYZZ</a>	LLED Barra 24V 225 CW573 HE Frost	3314	110	5668 ± 207	Cool	80	Frost
11225027112 <a href="#">XXYYZZ</a>	LLED Barra 24V 225 CW653 Frost	3013	100	6536 ± 279	Cool	80	Frost

\* Luminous flux ± 7.5%

\* Other color temperatures available upon request



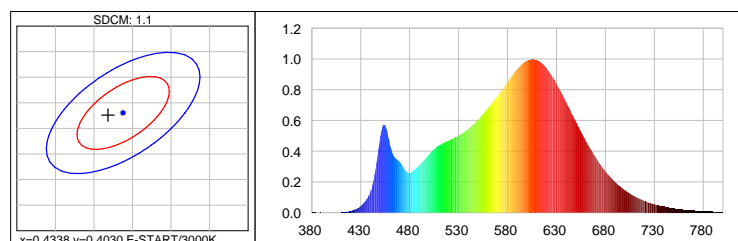
## Dimensions



A (mm)	B (mm)	C (mm)	D (mm)	E (mm)	F (mm)	G (mm)
15	12	20	17	2269	2285	2254

## Photometric Data

### Warm white 3000K 3SDCM



Photometric Parameters

EEL: 0.14

Energy Efficiency Class: A+ (EU 874-2012)

#### CIE Colorimetric Parameters

Chromaticity coordinates:  $x=0.4318$   $y=0.4026$

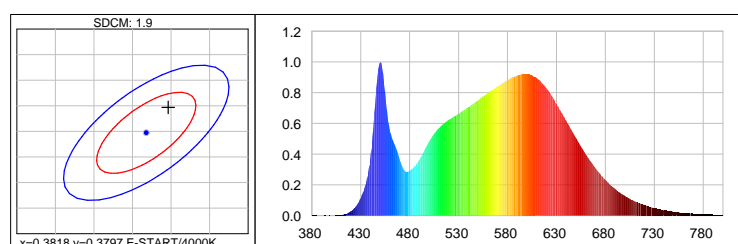
$u(u')=0.2479$   $v=0.3467$   $v'=0.5200$

CCT:  $T_c=3075K$  ( $duv=0.00012$ )

CRI:  $R_a=84.9$

Color Ratio:  $R=0.229$   $G=0.739$   $B=0.032$

### Neutral white 4000K 3SDCM



Photometric Parameters

EEL: 0.13

Energy Efficiency Class: A+ (EU 874-2012)

#### CIE Colorimetric Parameters

Chromaticity coordinates:  $x=0.3846$   $y=0.3847$

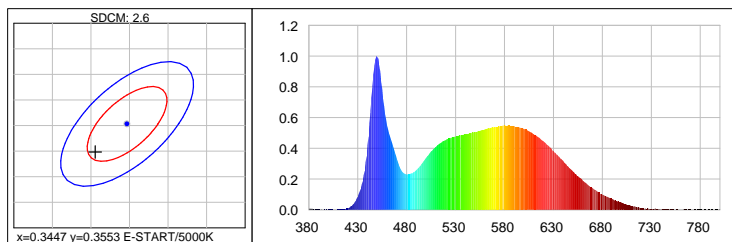
$u(u')=0.2247$   $v=0.3371$   $v'=0.5056$

CCT:  $T_c=3947K$  ( $duv=0.00246$ )

CRI:  $R_a=84.5$

Color Ratio:  $R=0.186$   $G=0.777$   $B=0.037$

## Cool white 5000K 3SDCM



### Photometric Parameters

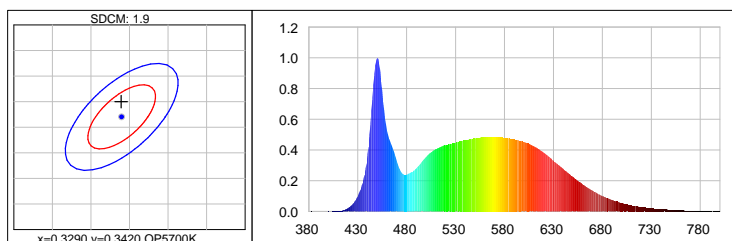
EEL: 0.15 Energy Efficiency Class: A+ (EU 874-2012)

### CIE Colorimetric Parameters

Chromaticity coordinates:  $x=0.3406$   $y=0.3498$   $u(u')=0.2090$   $v=0.3221$   $v'=0.4831$

CCT:  $T_c=5172K$  ( $duv=0.00096$ ) CRI:  $R_a=85.4$  Color Ratio:  $R=0.156$   $G=0.797$   $B=0.047$

## Cool white 5700K 3SDCM



### Photometric Parameters

EEL: 0.14

Energy Efficiency Class: A+ (EU 874-2012)

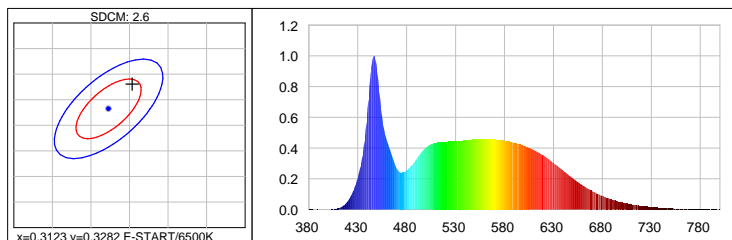
### CIE Colorimetric Parameters

Chromaticity coordinates:  $x=0.3289$   $y=0.3450$

$u(u')=0.2030$   $v=0.3193$   $v'=0.4790$

CCT:  $T_c=5654K$  ( $duv=0.00356$ ) CRI:  $R_a=86.6$  Color Ratio:  $R=0.147$   $G=0.800$   $B=0.053$

## Cool white 6500K 3SDCM



### Photometric Parameters

EEL: 0.15

Energy Efficiency Class: A+ (EU 874-2012)

### CIE Colorimetric Parameters

Chromaticity coordinates:  $x=0.3154$   $y=0.3330$   $u(u')=0.1982$   $v=0.3139$   $v'=0.4709$

CCT:  $T_c=6338K$  ( $duv=0.00393$ ) CRI:  $R_a=87.4$  Color Ratio:  $R=0.140$   $G=0.803$   $B=0.057$

## Options

### Cover type



Clear



Frost

**XXYYZZ** - The last six digits are additional options.

**XX** - Bar body finishing.


Natural Aluminum  
XX=01

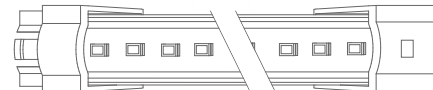
White Aluminum  
XX=02

Brown Aluminum  
XX=03

Polycarbonate  
XX=81

**YY** - Bar connection.


Top Input cable  
YY=01

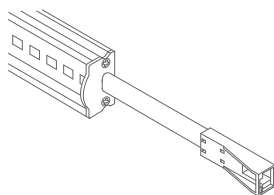
Male connector input - 1C2P  
YY=04

Male connector input female connector output -  
2C2P  
YY=06

Top Input cable output connector - 1C2P+STopo  
YY=08

ZZ - Cable type.



Without connector  
ZZ=00



ASQC2 Connector  
ZZ=27



DCJ Connector  
ZZ=41

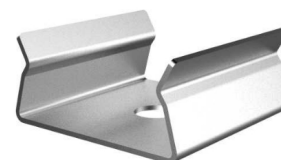
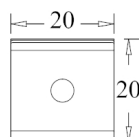
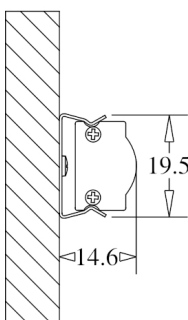


DC24 Connector  
ZZ=46

## Fixture option



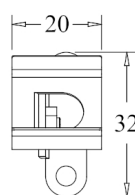
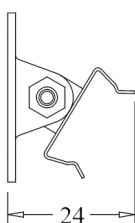
Unit of measurement: mm  
180° CLIP W/ 45° BASE Cod: 8400035115



Unit of measurement: mm  
180 ° FIX CLIP Cod: 8400035111



Unit of measurement: mm  
45 ° FIX CLIP Cod: 8400035112



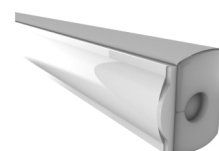
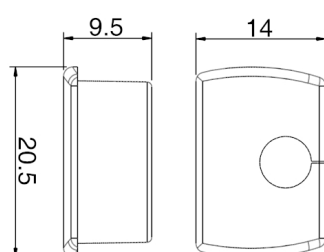
Unit of measurement: mm  
ROTATING CLIP Cod: 8400035114



Unit of measurement: mm  
180 ° PVC SUPPORT  
TYPE: 180°



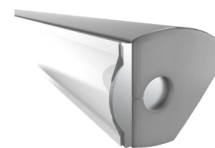
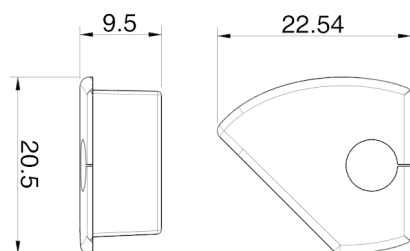
Unit of measurement: mm  
180 ° PVC SUPPORT SILICONE CAP WHITHOUT HOLE  
COLOR CODES AVAIALE: BR: 8400033071 || CZ: 8400033081



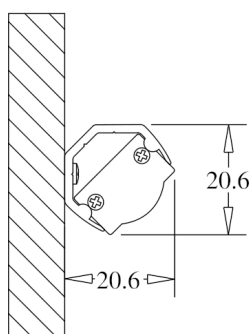
Unit of measurement: mm  
180 ° PVC SUPPORT SILICONE CAP WITH HOLE  
COLOR CODES AVAIALE: BR: 8400033072 || CZ: 8400033082



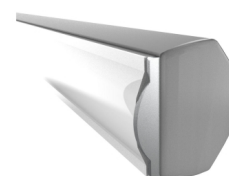
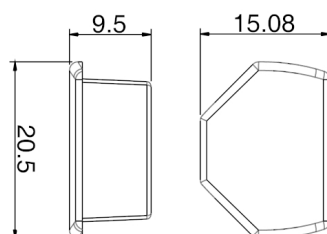
Unit of measurement: mm  
45 ° PVC SUPPORT  
TYPE: 45°



Unit of measurement: mm  
 45 ° PVC SUPPORT SILICONE CAP WITH HOLE  
 COLOR CODES AVAIALE: BR Right: 8400033076 || CZ Right: 8400033086 || BR Left: 8400033075 || CZ Left: 8400033085

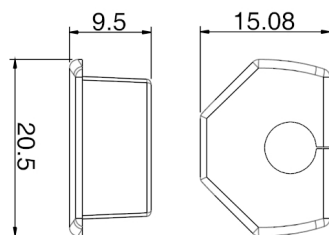


Unit of measurement: mm  
 CORNER PVC SUPPORT  
 TYPE: CORNER



Unit of measurement: mm  
 CORNER PVC SUPPORT SILICONE CAP  
 COLOR CODES AVAIALE: BR: 8400033073 || CZ: 8400033083

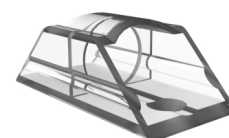




Unit of measurement: mm  
CORNER PVC SUPPORT SILICONE CAP  
COLOR CODES AVAILABLE: BR: 8400033074 || CZ: 8400033084



Unit of measurement: mm  
180° FIXATION CLIP - POLYCARBONATE Cod: 8400035117



Unit of measurement: mm  
FIXATION SUPPORT - POLYCARBONATE Cod: 8400035119