

Description



The 24V Eco LED Bars, just like our 24V LED Bars , aims to create a new lighting concept and considerably reduce even more energy consumptions than previous versions.

Color temperature tolerance of 3 SDCM MacAdam ellipses, defined by ANSI C78.377:2011

Energy Efficiency Class: A+ (EU 874-2012)

LEDs are classified as Risk Group 1 according standard EN62471 Photobiological Safety of Lamps and Lamp Systems.

Our polycarbonate lent Trirex 3030IR, meets the standard for Food contact FDA 21CFR 177.1580 and (EU) No. 10/2011 for European Union

A great flexibility of sizes, (10cm to 220cm) allows to adapt the sizes and luminosity to each project.

With easy installation, allows the use of individual bars for each of the sizes and or join several bars in a continuous line so that the space is suitably illuminated.

Technical Features:

Power source	Class II constant voltage external LED drive power supply
Voltage	24 ± 3 V DC
Current	90 mA
Power	2.2 ±0.2W
Useful Lifetime	60.000 hours (L70 - 55°C @ 65%H) *
Beam angle	120 ± 5° **
Field angle	Clear: 135 ± 5° Frost: 195 ± 5° ***
Nr of LEDs	21 - SMD
Working Temp.	-20 to 40 °C
Isolation	Class III
Protection degree	IP42
Lumen maintenance	LM80 (Report available: LM-80 9000hrs)
Certificate	CE / RoHs

*Luminosity depreciation based on L70.

**Beam angle: 50% of maximum lum.

***Field angle: 10% of maximum lum.

Light Technical Data:

Reference	Description	Lum. flux (Lm)*	Eff. (Lm/W)	Color Temp. (K)**	Color	CRI >	Lens type
11022532151 XXYYZZ	LLED Barra 24V 25 WW303 HE ECO DL Clear	240	109	3045 ± 84	Warm	80	Clear
11022534151 XXYYZZ	LLED Barra 24V 25 NW403 HE ECO DL Clear	251	114	3986 ± 144	Neutral	80	Clear
11022524151 XXYYZZ	LLED Barra 24V 25 NW403 ECO DL Clear	233	106	3986 ± 144	Neutral	80	Clear
11022525151 XXYYZZ	LLED Barra 24V 25 CW503 ECO DL Clear	233	106	5029 ± 186	Cool	80	Clear
11022536151 XXYYZZ	LLED Barra 24V 25 CW573 HE ECO DL Clear	251	114	5668 ± 207	Cool	80	Clear
11022527151 XXYYZZ	LLED Barra 24V 25 CW653 ECO DL Clear	233	106	6536 ± 279	Cool	80	Clear
11022532152 XXYYZZ	LLED Barra 24V 25 WW303 HE ECO DL Frost	198	90	3045 ± 84	Warm	80	Frost
11022534152 XXYYZZ	LLED Barra 24V 25 NW403 HE ECO DL Frost	208	94	3986 ± 144	Neutral	80	Frost
11022524152 XXYYZZ	LLED Barra 24V 25 NW403 ECO DL Frost	185	84	3986 ± 144	Neutral	80	Frost
11022525152 XXYYZZ	LLED Barra 24V 25 CW503 ECO DL Frost	185	84	5029 ± 186	Cool	80	Frost
11022536152 XXYYZZ	LLED Barra 24V 25 CW573 HE ECO DL Frost	208	94	5668 ± 207	Cool	80	Frost
11022527152 XXYYZZ	LLED Barra 24V 25 CW653 ECO DL Frost	185	84	6536 ± 279	Cool	80	Frost

* Luminous flux ± 7.5%

* Other color temperatures available upon request



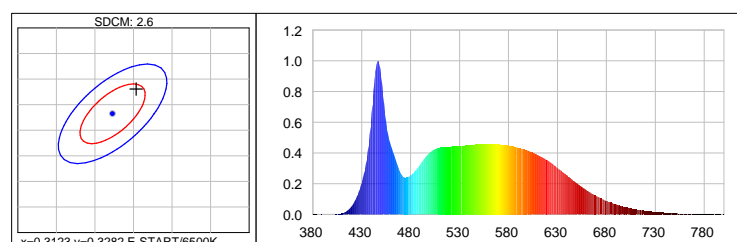
Dimensions



A (mm)	B (mm)	C (mm)	D (mm)	E (mm)	F (mm)	G (mm)
15	12	20	17	244	260	229

Photometric Data

Cool white 6500K 3SDCM



Photometric Parameters

EEI: 0.15 Energy Efficiency Class: A+ (EU 874-2012)

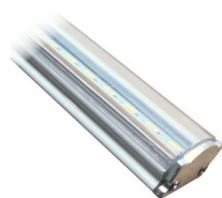
CIE Colorimetric Parameters

Chromaticity coordinates: $x=0.3154$ $y=0.3330$ $u(u')=0.1982$ $v=0.3139$ $v'=0.4709$

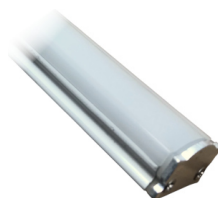
CCT: $T_c=6338K$ ($duv=0.00393$) CRI: $R_a=87.4$ Color Ratio: $R=0.140$ $G=0.803$ $B=0.057$

Options

Cover type



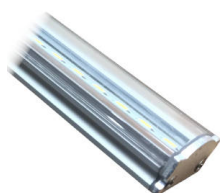
Clear



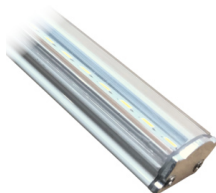
Frost

XXYYZZ - The last six digits are additional options.

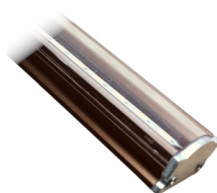
XX - Bar body finishing.



Natural Aluminum
XX=01



White Aluminum
XX=02



Brown Aluminum
XX=03

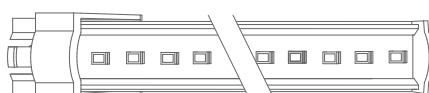


Polycarbonate
XX=81

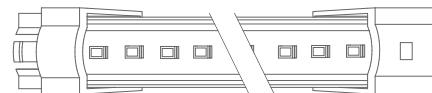
YY - Bar connection.



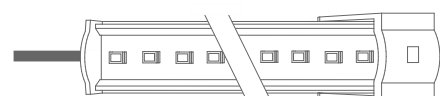
Top Input cable
YY=01



Male connector input - 1C2P
YY=04

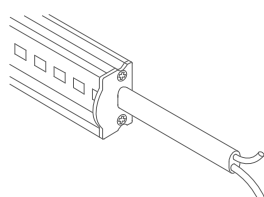


Male connector input female connector output -
2C2P
YY=06

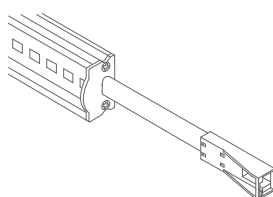


Top Input cable output connector - 1C2P+STopo
YY=08

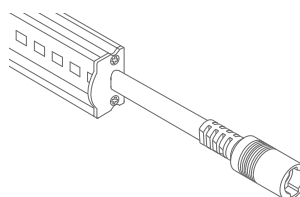
ZZ - Cable type.



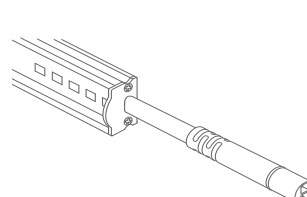
Without connector
ZZ=00



ASQC2 Connector
ZZ=27

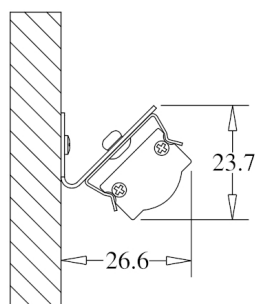


DCJ Connector
ZZ=41

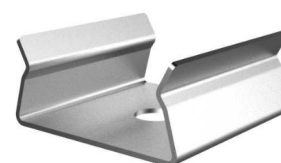
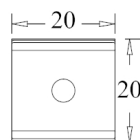


DC24 Connector
ZZ=46

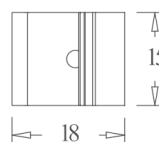
Fixture option



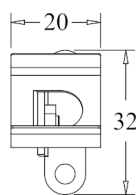
Unit of measurement: mm
180° CLIP W/ 45° BASE Cod: 8400035115



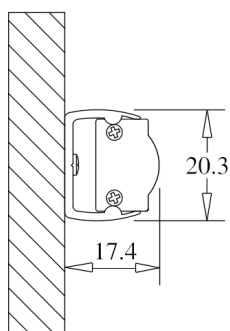
Unit of measurement: mm
180 ° FIX CLIP Cod: 8400035111



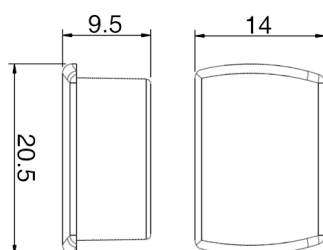
Unit of measurement: mm
45 ° FIX CLIP Cod: 8400035112



Unit of measurement: mm
ROTATING CLIP Cod: 8400035114



Unit of measurement: mm
180 ° PVC SUPPORT
TYPE: 180°



Unit of measurement: mm
180 ° PVC SUPPORT SILICONE CAP WHITHOUT HOLE
COLOR CODES AVAIALE: BR: 8400033071 || CZ: 8400033081



Unit of measurement: mm
180 ° PVC SUPPORT SILICONE CAP WITH HOLE
COLOR CODES AVAILABLE: BR: 8400033072 || CZ: 8400033082



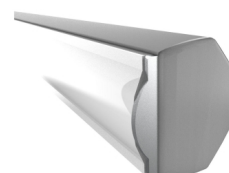
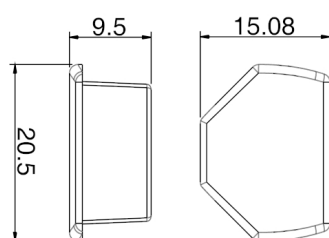
Unit of measurement: mm
45 ° PVC SUPPORT
TYPE: 45°



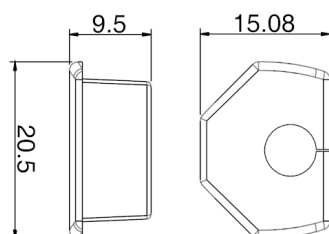
Unit of measurement: mm
45 ° PVC SUPPORT SILICONE CAP WITH HOLE
COLOR CODES AVAILABLE: BR Right: 8400033076 || CZ Right: 8400033086 || BR Left: 8400033075 || CZ Left: 8400033085



Unit of measurement: mm
CORNER PVC SUPPORT
TYPE: CORNER



Unit of measurement: mm
CORNER PVC SUPPORT SILICONE CAP
COLOR CODES AVAILABLE: BR: 8400033073 || CZ: 8400033083



Unit of measurement: mm
CORNER PVC SUPPORT SILICONE CAP
COLOR CODES AVAILABLE: BR: 8400033074 || CZ: 8400033084



Unit of measurement: mm
180° FIXATION CLIP - POLYCARBONATE Cod: 8400035117



Unit of measurement: mm
FIXATION SUPPORT - POLYCARBONATE Cod: 8400035119