

Description



The LED bar is intended to create a new lighting concept and greatly reduce energy consumption. Color temperature tolerance of 3 SDCM MacAdam ellipse, according to ANSI C78.377: 2011.

A+ Energy class.

The LEDs meet the Eye safety standard EN62471 classified in RG-1.

The polycarbonate bar lens Trirex 3030IR, meets the food safety standards for FDA 21CFR 177.1580 and the European standard (EU) No. 10/2011.

A great flexibility of sizes, (10cm to 225cm) allows to adapt the sizes and luminosity to each project.

With easy installation, allows the use of individual bars for each of the sizes and or join several bars in a continuous line so that the space is suitably illuminated.

Technical Features:

Power source	Class II constant voltage external LED drive power supply
Voltage	24 ± 3 V DC
Current	126 mA
Power	3 ± 0.5 W
Useful Lifetime	60.000 hours (L70 - 55°C @ 65%H) *
Beam angle	120 ± 5° **
Field angle	Clear: 135 ± 5° Frost: 195 ± 5° ***
Nr of LEDs	36 - SMD
Working Temp.	-20 to 40 °C
Isolation	Class III
Protection degree	IP42
Lumen maintenance	LM80 (Report available: LM-80 9000hrs)
Certificate	CE / RoHs

*Luminosity depreciation based on L70.

**Beam angle: 50% of maximum lum.

***Field angle: 10% of maximum lum.

Light Technical Data:

Reference	Description	Lum. flux (Lm)*	Eff. (Lm/W)	Color Temp. (K)**	Color	CRI >	Lens type
11022532111 XXYYZZ	LLED Barra 24V 25 WW303 HE Clear	369	123	3045 ± 84	Warm	80	Clear
11022534111 XXYYZZ	LLED Barra 24V 25 NW403 HE Clear	386	129	3986 ± 144	Neutral	80	Clear
11022524111 XXYYZZ	LLED Barra 24V 25 NW403 Clear	368	123	3986 ± 144	Neutral	80	Clear
11022525111 XXYYZZ	LLED Barra 24V 25 CW503 Clear	368	123	5029 ± 186	Cool	80	Clear
11022536111 XXYYZZ	LLED Barra 24V 25 CW573 HE Clear	386	129	5668 ± 207	Cool	80	Clear
11022527111 XXYYZZ	LLED Barra 24V 25 CW653 Clear	368	123	6536 ± 279	Cool	80	Clear
11022532112 XXYYZZ	LLED Barra 24V 25 WW303 HE Frost	317	106	3045 ± 84	Warm	80	Frost
11022534112 XXYYZZ	LLED Barra 24V 25 NW403 HE Frost	331	110	3986 ± 144	Neutral	80	Frost
11022524112 XXYYZZ	LLED Barra 24V 25 NW403 Frost	301	100	3986 ± 144	Neutral	80	Frost
11022525112 XXYYZZ	LLED Barra 24V 25 CW503 Frost	301	100	5029 ± 186	Cool	80	Frost
11022536112 XXYYZZ	LLED Barra 24V 25 CW573 HE Frost	331	110	5668 ± 207	Cool	80	Frost
11022527112 XXYYZZ	LLED Barra 24V 25 CW653 Frost	301	100	6536 ± 279	Cool	80	Frost

* Luminous flux ± 7.5%

* Other color temperatures available upon request



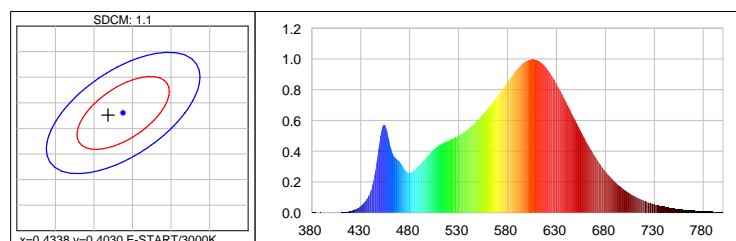
Dimensions



A (mm)	B (mm)	C (mm)	D (mm)	E (mm)	F (mm)	G (mm)
15	12	20	17	244	260	229

Photometric Data

Warm white 3000K 3SDCM



x=0.4338 y=0.4030 E-START/3000K

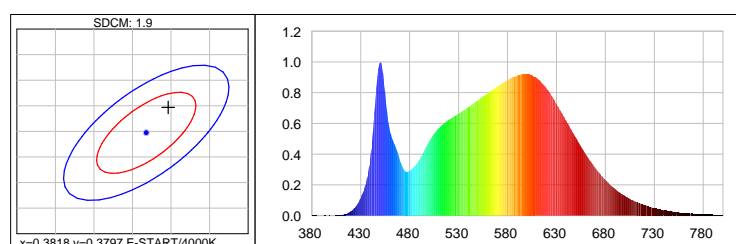
Photometric Parameters
EEI: 0.14

Energy Efficiency Class: A+ (EU 874-2012)

CIE Colorimetric Parameters

Chromaticity coordinates: x=0.4318 y=0.4026 u(u')=0.2479 v=0.3467 v'=0.5200
CCT: Tc=3075K (duv=0.00012) CRI: Ra= 84.9 Color Ratio: R=0.229 G=0.739 B=0.032

Neutral white 4000K 3SDCM



x=0.3818 y=0.3797 E-START/4000K

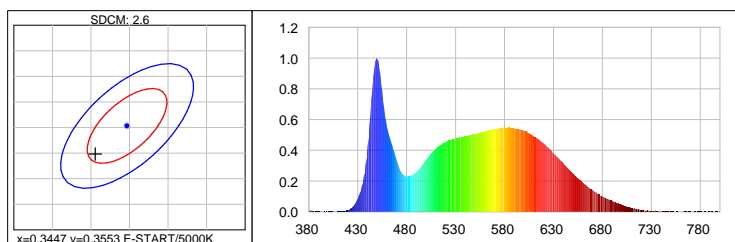
Photometric Parameters
EEI: 0.13

Energy Efficiency Class: A+ (EU 874-2012)

CIE Colorimetric Parameters

Chromaticity coordinates: x=0.3846 y=0.3847 u(u')=0.2247 v=0.3371 v'=0.5056
CCT: Tc=3947K (duv=0.00246) CRI: Ra= 84.5 Color Ratio: R=0.186 G=0.777 B=0.037

Cool white 5000K 3SDCM



Photometric Parameters

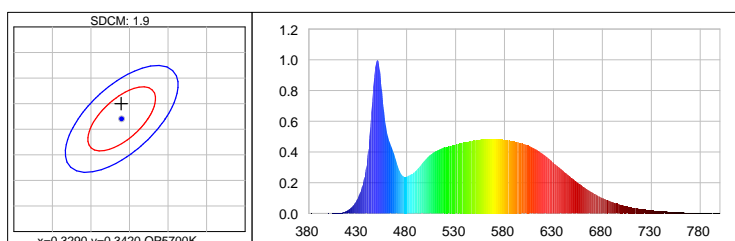
EEL: 0.15 Energy Efficiency Class: A+ (EU 874-2012)

CIE Colorimetric Parameters

Chromaticity coordinates: x=0.3406 y=0.3498 u(u')=0.2090 v=0.3221 v'=0.4831

CCT: Tc=5172K (duv=0.00096) CRI: Ra= 85.4 Color Ratio: R=0.156 G=0.797 B=0.047

Cool white 5700K 3SDCM



Photometric Parameters

EEL: 0.14

Energy Efficiency Class: A+ (EU 874-2012)

CIE Colorimetric Parameters

Chromaticity coordinates: x=0.3289 y=0.3450

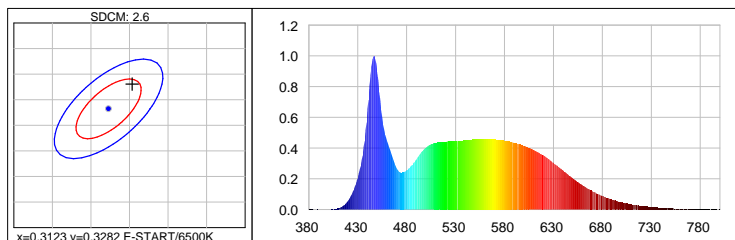
u(u')=0.2030 v=0.3193 v'=0.4790

CCT: Tc=5654K (duv=0.00356)

CRI: Ra= 86.6

Color Ratio: R=0.147 G=0.800 B=0.053

Cool white 6500K 3SDCM



Photometric Parameters

EEL: 0.15

Energy Efficiency Class: A+ (EU 874-2012)

CIE Colorimetric Parameters

Chromaticity coordinates: x=0.3154 y=0.3330 u(u')=0.1982 v=0.3139 v'=0.4709

CCT: Tc=6338K (duv=0.00393)

CRI: Ra= 87.4

Color Ratio: R=0.140 G=0.803 B=0.057

Options

Cover type



Clear



Frost

XXYYZZ - The last six digits are additional options.

XX - Bar body finishing.


Natural Aluminum
XX=01

White Aluminum
XX=02

Brown Aluminum
XX=03

Polycarbonate
XX=81

YY - Bar connection.

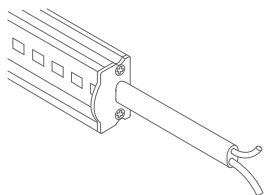

Top Input cable
YY=01

Male connector input - 1C2P
YY=04

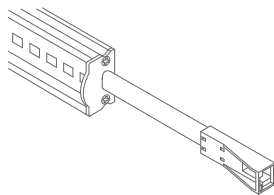
Male connector input female connector output -
2C2P
YY=06

Top Input cable output connector - 1C2P+STopo
YY=08

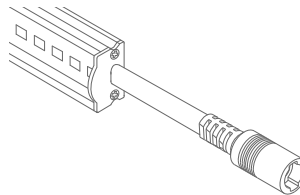
ZZ - Cable type.



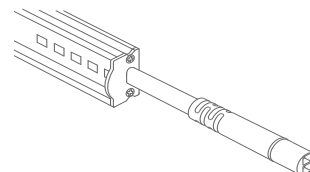
Without connector
ZZ=00



ASQC2 Connector
ZZ=27

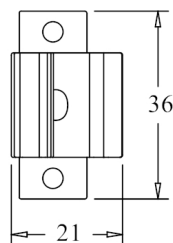
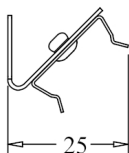
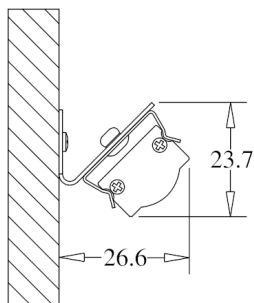


DCJ Connector
ZZ=41

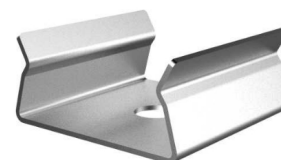
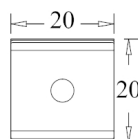
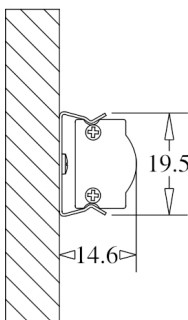


DC24 Connector
ZZ=46

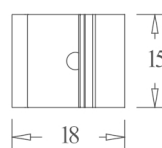
Fixture option



Unit of measurement: mm
180° CLIP W/ 45° BASE Cod: 8400035115



Unit of measurement: mm
180 ° FIX CLIP Cod: 8400035111



Unit of measurement: mm
45 ° FIX CLIP Cod: 8400035112



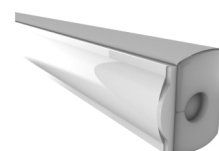
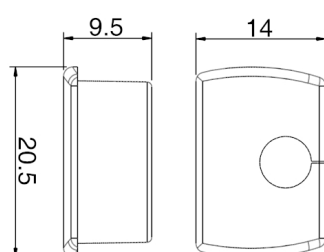
Unit of measurement: mm
ROTATING CLIP Cod: 8400035114



Unit of measurement: mm
180 ° PVC SUPPORT
TYPE: 180°



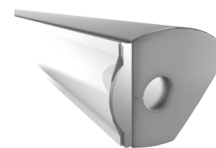
Unit of measurement: mm
180 ° PVC SUPPORT SILICONE CAP WHITHOUT HOLE
COLOR CODES AVAIIABLE: BR: 8400033071 || CZ: 8400033081



Unit of measurement: mm
180 ° PVC SUPPORT SILICONE CAP WITH HOLE
COLOR CODES AVAIIABLE: BR: 8400033072 || CZ: 8400033082



Unit of measurement: mm
45 ° PVC SUPPORT
TYPE: 45°



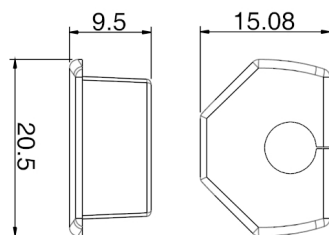
Unit of measurement: mm
 45 ° PVC SUPPORT SILICONE CAP WITH HOLE
 COLOR CODES AVAIALE: BR Right: 8400033076 || CZ Right: 8400033086 || BR Left: 8400033075 || CZ Left: 8400033085



Unit of measurement: mm
 CORNER PVC SUPPORT
 TYPE: CORNER



Unit of measurement: mm
 CORNER PVC SUPPORT SILICONE CAP
 COLOR CODES AVAIALE: BR: 8400033073 || CZ: 8400033083



Unit of measurement: mm
 CORNER PVC SUPPORT SILICONE CAP
 COLOR CODES AVAILABLE: BR: 8400033074 || CZ: 8400033084



Unit of measurement: mm
 180° FIXATION CLIP - POLYCARBONATE Cod: 8400035117



Unit of measurement: mm
 FIXATION SUPPORT - POLYCARBONATE Cod: 8400035119