

Description



The 24V Eco LED Bars, just like our 24V LED Bars , aims to create a new lighting concept and considerably reduce even more energy consumptions than previous versions.

Color temperature tolerance of 3 SDCM MacAdam ellipses, defined by ANSI C78.377:2011

Energy Efficiency Class: A+ (EU 874-2012)

LEDs are classified as Risk Group 1 according standard EN62471 Photobiological Safety of Lamps and Lamp Systems.

Our polycarbonate lent Trirex 3030IR, meets the standard for Food contact FDA 21CFR 177.1580 and (EU) No. 10/2011 for European Union

A great flexibility of sizes, (10cm to 220cm) allows to adapt the sizes and luminosity to each project.

With easy installation, allows the use of individual bars for each of the sizes and or join several bars in a continuous line so that the space is suitably illuminated.

Technical Features:

| | |
|-------------------|---|
| Power source | Class II constant voltage external LED drive power supply |
| Voltage | 24 ± 3 V DC |
| Current | 180 mA |
| Power | 4.3 ±0.2W |
| Useful Lifetime | 60.000 hours (L70 - 55°C @ 65%H) * |
| Beam angle | 120 ± 5° ** |
| Field angle | Clear: 135 ± 5° Frost: 195 ± 5° *** |
| Nr of LEDs | 42 - SMD |
| Working Temp. | -20 to 40 °C |
| Isolation | Class III |
| Protection degree | IP42 |
| Lumen maintenance | LM80 (Report available: LM-80 9000hrs) |
| Certificate | CE / RoHs |

*Luminosity depreciation based on L70.

**Beam angle: 50% of maximum lum.

***Field angle: 10% of maximum lum.

Light Technical Data:

| Reference | Description | Lum. flux (Lm)* | Eff. (Lm/W) | Color Temp. (K)** | Color | CRI > | Lens type |
|------------------------------------|---|-----------------|-------------|-------------------|---------|-------|-----------|
| 11045032151 XXYYZZ | LLED Barra 24V 47 WW303 HE ECO DL Clear | 480 | 112 | 3045 ± 84 | Warm | 80 | Clear |
| 11045034151 XXYYZZ | LLED Barra 24V 47 NW403 HE ECO DL Clear | 502 | 117 | 3986 ± 144 | Neutral | 80 | Clear |
| 11045024151 XXYYZZ | LLED Barra 24V 47 NW403 ECO DL Clear | 466 | 108 | 3986 ± 144 | Neutral | 80 | Clear |
| 11045025151 XXYYZZ | LLED Barra 24V 47 CW503 ECO DL Clear | 466 | 108 | 5029 ± 186 | Cool | 80 | Clear |
| 11045036151 XXYYZZ | LLED Barra 24V 47 CW573 HE ECO DL Clear | 502 | 117 | 5668 ± 207 | Cool | 80 | Clear |
| 11045027151 XXYYZZ | LLED Barra 24V 47 CW653 ECO DL Clear | 466 | 108 | 6536 ± 279 | Cool | 80 | Clear |
| 11045032152 XXYYZZ | LLED Barra 24V 47 WW303 HE ECO DL Frost | 397 | 92 | 3045 ± 84 | Warm | 80 | Frost |
| 11045034152 XXYYZZ | LLED Barra 24V 47 NW403 HE ECO DL Frost | 415 | 97 | 3986 ± 144 | Neutral | 80 | Frost |
| 11045024152 XXYYZZ | LLED Barra 24V 47 NW403 ECO DL Frost | 370 | 86 | 3986 ± 144 | Neutral | 80 | Frost |
| 11045025152 XXYYZZ | LLED Barra 24V 47 CW503 ECO DL Frost | 370 | 86 | 5029 ± 186 | Cool | 80 | Frost |
| 11045036152 XXYYZZ | LLED Barra 24V 47 CW573 HE ECO DL Frost | 415 | 97 | 5668 ± 207 | Cool | 80 | Frost |
| 11045027152 XXYYZZ | LLED Barra 24V 47 CW653 ECO DL Frost | 370 | 86 | 6536 ± 279 | Cool | 80 | Frost |

* Luminous flux ± 7.5%

* Other color temperatures available upon request



Dimensions



| A (mm) | B (mm) | C (mm) | D (mm) | E (mm) | F (mm) | G (mm) |
|--------|--------|--------|--------|--------|--------|--------|
| 15 | 12 | 20 | 17 | 469 | 485 | 454 |

Photometric Data

Cool white 6500K 3SDCM



Photometric Parameters

EEI: 0.15 Energy Efficiency Class: A+ (EU 874-2012)

CIE Colorimetric Parameters

Chromaticity coordinates: x=0.3154 y=0.3330 u(u)=0.1982 v=0.3139 v'=0.4709

CCT: Tc=6338K (duv=0.00393) CRI: Ra= 87.4 Color Ratio: R=0.140 G=0.803 B=0.057

Options

Cover type

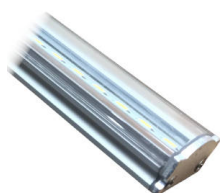


Clear

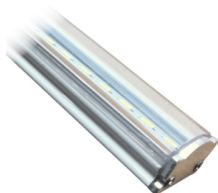
Frost

XXYYZZ - The last six digits are additional options.

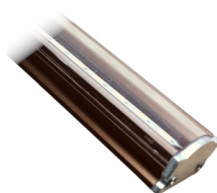
XX - Bar body finishing.



Natural Aluminum
XX=01



White Aluminum
XX=02



Brown Aluminum
XX=03

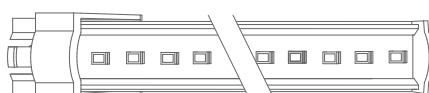


Polycarbonate
XX=81

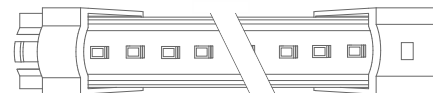
YY - Bar connection.



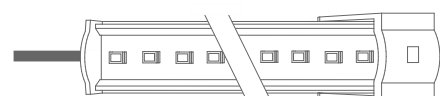
Top Input cable
YY=01



Male connector input - 1C2P
YY=04

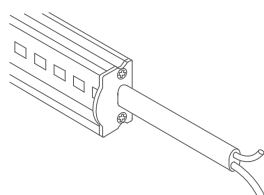


Male connector input female connector output -
2C2P
YY=06



Top Input cable output connector - 1C2P+STopo
YY=08

ZZ - Cable type.



Without connector
ZZ=00



ASQC2 Connector
ZZ=27

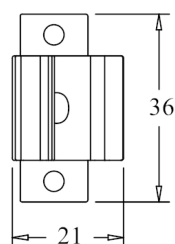
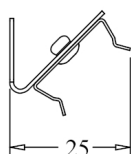
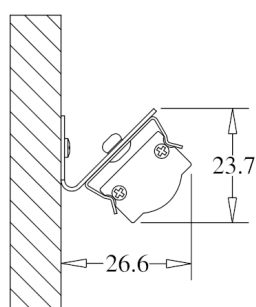


DCJ Connector
ZZ=41



DC24 Connector
ZZ=46

Fixture option



Unit of measurement: mm
180° CLIP W/ 45° BASE Cod: 8400035115



Unit of measurement: mm
180 ° FIX CLIP Cod: 8400035111



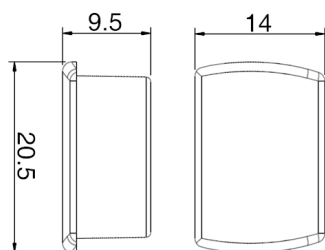
Unit of measurement: mm
45 ° FIX CLIP Cod: 8400035112



Unit of measurement: mm
ROTATING CLIP Cod: 8400035114



Unit of measurement: mm
180 ° PVC SUPPORT
TYPE: 180°



Unit of measurement: mm
180 ° PVC SUPPORT SILICONE CAP WHITHOUT HOLE
COLOR CODES AVAIABLE: BR: 8400033071 || CZ: 8400033081



Unit of measurement: mm
180 ° PVC SUPPORT SILICONE CAP WITH HOLE
COLOR CODES AVAILABLE: BR: 8400033072 || CZ: 8400033082



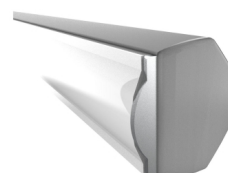
Unit of measurement: mm
45 ° PVC SUPPORT
TYPE: 45°



Unit of measurement: mm
45 ° PVC SUPPORT SILICONE CAP WITH HOLE
COLOR CODES AVAILABLE: BR Right: 8400033076 || CZ Right: 8400033086 || BR Left: 8400033075 || CZ Left: 8400033085



Unit of measurement: mm
CORNER PVC SUPPORT
TYPE: CORNER



Unit of measurement: mm
CORNER PVC SUPPORT SILICONE CAP
COLOR CODES AVAILABLE: BR: 8400033073 || CZ: 8400033083



Unit of measurement: mm
CORNER PVC SUPPORT SILICONE CAP
COLOR CODES AVAILABLE: BR: 8400033074 || CZ: 8400033084



Unit of measurement: mm
180° FIXATION CLIP - POLYCARBONATE Cod: 8400035117



Unit of measurement: mm
FIXATION SUPPORT - POLYCARBONATE Cod: 8400035119