

## Description



The Eco<sup>2</sup> LED Bars, just like our 3s Led Bars or ECO, aims to create a new lighting concept and considerably reduce even more energy consumptions than previous versions.

Color temperature tolerance of 3 SDCM MacAdam ellipses, defined by ANSI C78.377:2011 LEDs are classified as Risk Group 1 according standard EN62471.

Photobiological Safety of Lamps and Lamp Systems. Our polycarbonate lent Trirex 3030IR, meets the standard for Food contact FDA 21CFR 177.1580 and (EU) No. 10/2011 for European Union.

Huge flexibility size(90-2250mm) allows size and lighting composition for each project.

Easy to install, allows the use of single bars for each sizes, or join several continuous bars so that the lighting space is suitable.

## Technical Features:

Power source	Class II constant voltage external LED drive power supply
Voltage	24 ± 3 V DC
Current	143 mA
Power	3.4 ±0.2W
Useful Lifetime	60.000 hours (L70 - 55°C @ 65%H) *
Beam angle	120 ± 5° **
Field angle	Clear: 135 ± 5° Frost: 195 ± 5° ***
Nr of LEDs	40 - SMD
Working Temp.	-20 to 40 °C
Isolation	Class III
Protection degree	IP42
Lumen maintenance	LM80 (Report available: <a href="#">LM-80 9000hrs</a> )
Certificate	CE / RoHs

\*Luminosity depreciation based on L70.  
 \*\*Beam angle: 50% of maximum lum.  
 \*\*\*Field angle: 10% of maximum lum.

## Light Technical Data:

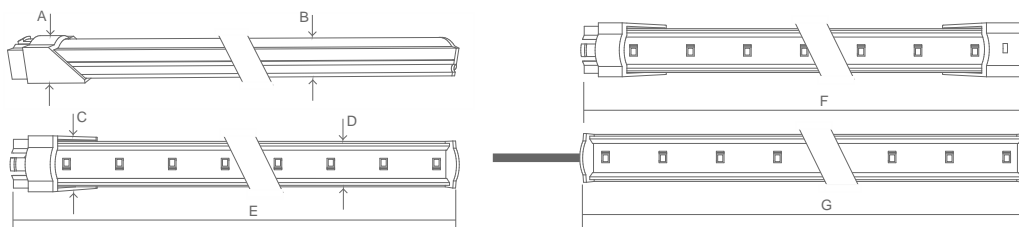
Reference	Description	Lum. flux (Lm)*	Eff. (Lm/W)	Color Temp. (K)**	Color	CRI >	Lens type
11052532161 <a href="#">XXYYZZ</a>	LLED Barra 24V 55 WW303 HE ECO <sup>2</sup> DL Clear	383	113	3045 ± 84	Warm	80	Clear
11052542161 <a href="#">XXYYZZ</a>	LLED Barra 24V 55 WW303 E1 ECO <sup>2</sup> DL Clear	397	117	3045 ± 84	Warm	80	Clear
11052534161 <a href="#">XXYYZZ</a>	LLED Barra 24V 55 NW403 HE ECO <sup>2</sup> DL Clear	400	118	3986 ± 144	Neutral	80	Clear
11052544161 <a href="#">XXYYZZ</a>	LLED Barra 24V 55 NW403 E1 ECO <sup>2</sup> DL Clear	420	123	3986 ± 144	Neutral	80	Clear
11052525161 <a href="#">XXYYZZ</a>	LLED Barra 24V 55 CW503 ECO <sup>2</sup> DL Clear	352	104	5029 ± 186	Cool	80	Clear
11052536161 <a href="#">XXYYZZ</a>	LLED Barra 24V 55 CW573 HE ECO <sup>2</sup> DL Clear	400	118	5668 ± 207	Cool	80	Clear
11052527161 <a href="#">XXYYZZ</a>	LLED Barra 24V 55 CW653 ECO <sup>2</sup> DL Clear	352	104	6536 ± 279	Cool	80	Clear
11052532162 <a href="#">XXYYZZ</a>	LLED Barra 24V 55 WW303 HE ECO <sup>2</sup> DL Frost	301	88	3045 ± 84	Warm	80	Frost
11052542162 <a href="#">XXYYZZ</a>	LLED Barra 24V 55 WW303 E1 ECO <sup>2</sup> DL Frost	302	89	3045 ± 84	Warm	80	Frost
11052534162 <a href="#">XXYYZZ</a>	LLED Barra 24V 55 NW403 HE ECO <sup>2</sup> DL Frost	314	92	3986 ± 144	Neutral	80	Frost
11052544162 <a href="#">XXYYZZ</a>	LLED Barra 24V 55 NW403 E1 ECO <sup>2</sup> DL Frost	319	94	3986 ± 144	Neutral	80	Frost
11052525162 <a href="#">XXYYZZ</a>	LLED Barra 24V 55 CW503 ECO <sup>2</sup> DL Frost	280	82	5029 ± 186	Cool	80	Frost
11052536162 <a href="#">XXYYZZ</a>	LLED Barra 24V 55 CW573 HE ECO <sup>2</sup> DL Frost	314	92	5668 ± 207	Cool	80	Frost
11052527162 <a href="#">XXYYZZ</a>	LLED Barra 24V 55 CW653 ECO <sup>2</sup> DL Frost	280	82	6536 ± 279	Cool	80	Frost

\* Luminous flux ± 7.5%

\* Other color temperatures available upon request



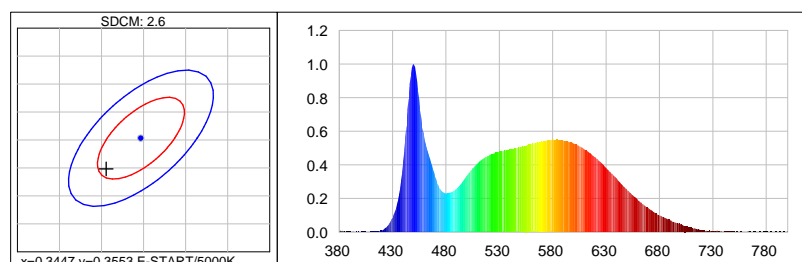
## Dimensions



A (mm)	B (mm)	C (mm)	D (mm)	E (mm)	F (mm)	G (mm)
15	12	20	17	544	560	529

## Photometric Data

### Cool white 5000K 3SDCM



#### Photometric Parameters

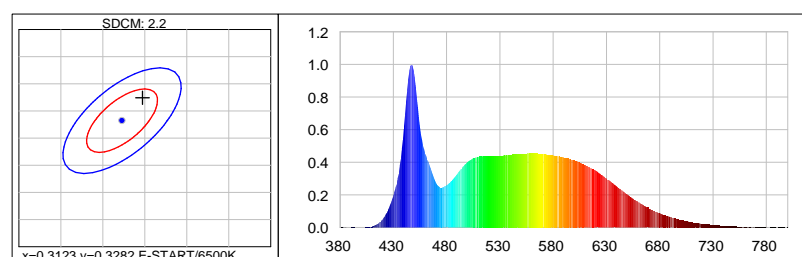
EEL: 0.15 Energy Efficiency Class: A+ (EU 874-2012)

#### CIE Colorimetric Parameters

Chromaticity coordinates:  $x=0.3406$   $y=0.3498$   $u(u')=0.2090$   $v=0.3221$   $v'=0.4831$

CCT:  $T_c=5172K$  ( $duv=0.00096$ ) CRI:  $R_a=85.4$  Color Ratio:  $R=0.156$   $G=0.797$   $B=0.047$

### Cool white 6500K 3SDCM



#### Photometric Parameters

EEL: 0.15

Energy Efficiency Class: A+ (EU 874-2012)

#### CIE Colorimetric Parameters

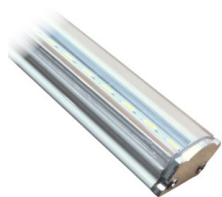
Chromaticity coordinates:  $x=0.3147$   $y=0.3324$

$u(u')=0.1980$   $v=0.3136$   $v'=0.4704$

CCT:  $T_c=6374K$  ( $duv=0.00392$ ) CRI:  $R_a=87.8$  Color Ratio:  $R=0.140$   $G=0.802$   $B=0.058$

## Options

### Cover type



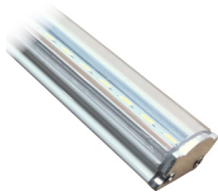
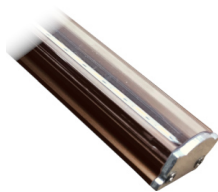
Clear



Frost

**XXYYZZ** - The last six digits are additional options.

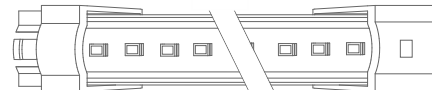
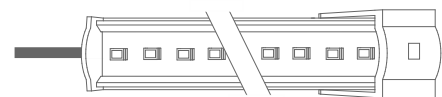
**XX** - Bar body finishing.


Natural Aluminum  
XX=01

White Aluminum  
XX=02

Brown Aluminum  
XX=03

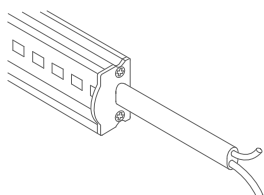
Polycarbonate  
XX=81

**YY** - Bar connection.

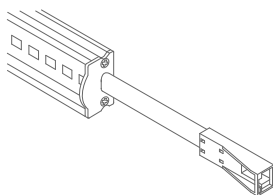

Top Input cable  
YY=01

Male connector input - 1C2P  
YY=04

Male connector input female connector output -  
2C2P  
YY=06

Top Input cable output connector - 1C2P+STopo  
YY=08

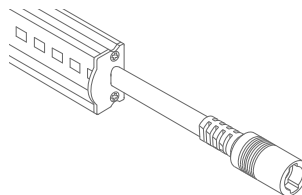
ZZ - Cable type.



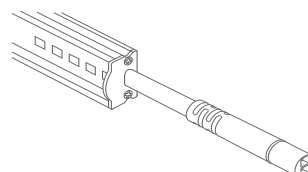
Without connector  
ZZ=00



ASQC2 Connector  
ZZ=27

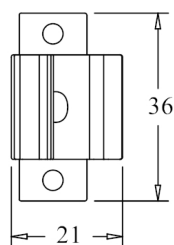
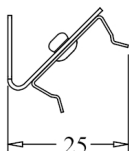
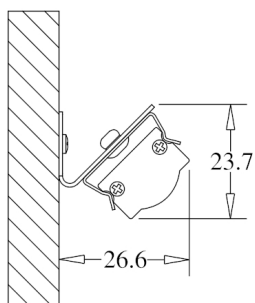


DCJ Connector  
ZZ=41

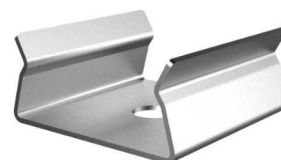
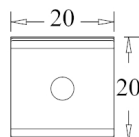
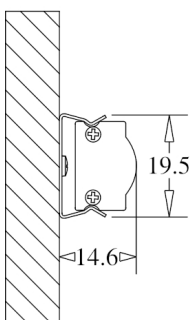


DC24 Connector  
ZZ=46

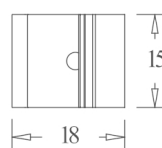
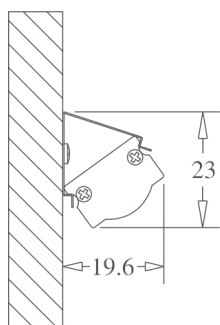
## Fixture option



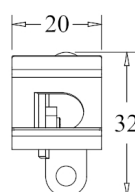
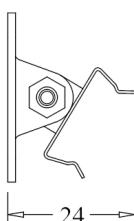
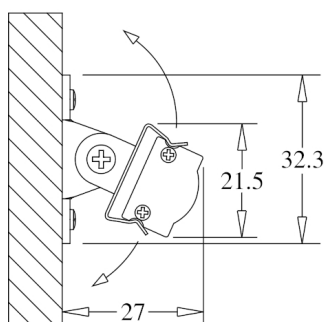
Unit of measurement: mm  
180° CLIP W/ 45° BASE Cod: 8400035115



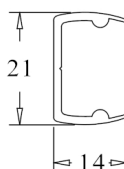
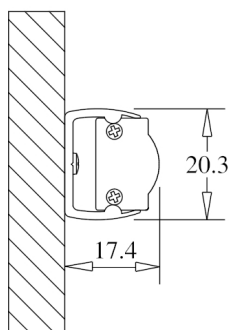
Unit of measurement: mm  
180 ° FIX CLIP Cod: 8400035111



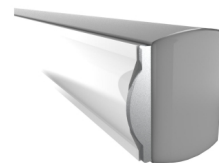
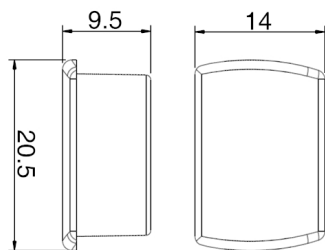
Unit of measurement: mm  
45 ° FIX CLIP Cod: 8400035112



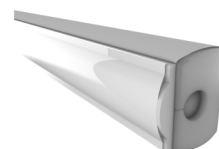
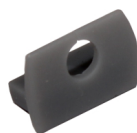
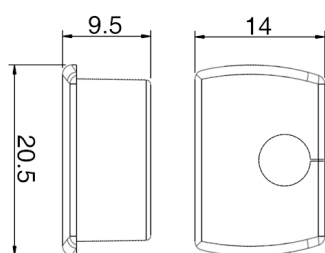
Unit of measurement: mm  
ROTATING CLIP Cod: 8400035114



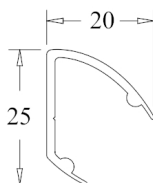
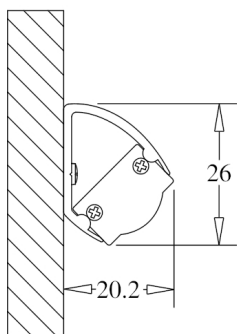
Unit of measurement: mm  
180 ° PVC SUPPORT  
TYPE: 180°



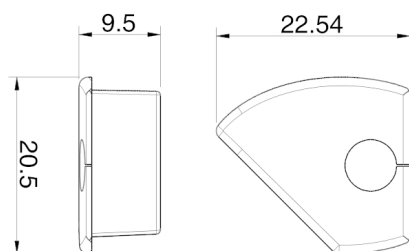
Unit of measurement: mm  
180 ° PVC SUPPORT SILICONE CAP WHITHOUT HOLE  
COLOR CODES AVAIALE: BR: 8400033071 || CZ: 8400033081



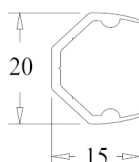
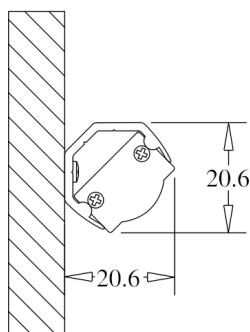
Unit of measurement: mm  
180 ° PVC SUPPORT SILICONE CAP WITH HOLE  
COLOR CODES AVAIALE: BR: 8400033072 || CZ: 8400033082



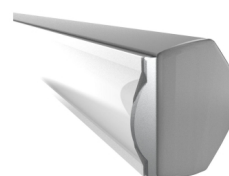
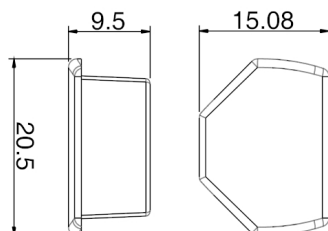
Unit of measurement: mm  
45 ° PVC SUPPORT  
TYPE: 45°



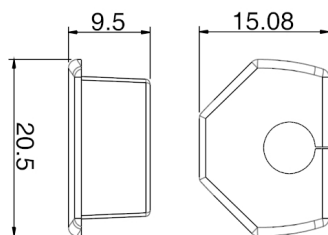
Unit of measurement: mm  
45 ° PVC SUPPORT SILICONE CAP WITH HOLE  
COLOR CODES AVAIALE: BR Right: 8400033076 || CZ Right: 8400033086 || BR Left: 8400033075 || CZ Left: 8400033085



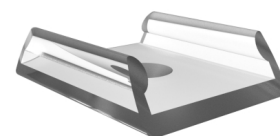
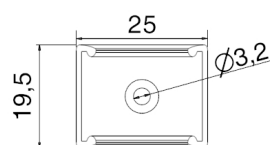
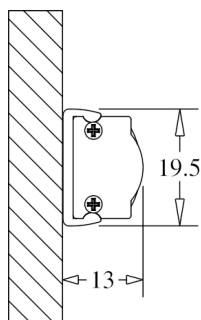
Unit of measurement: mm  
CORNER PVC SUPPORT  
TYPE: CORNER



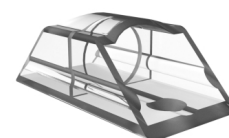
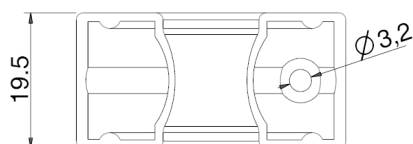
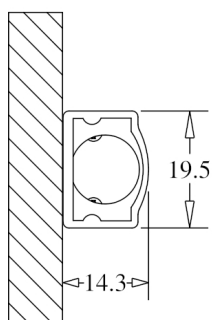
Unit of measurement: mm  
CORNER PVC SUPPORT SILICONE CAP  
COLOR CODES AVAIALE: BR: 8400033073 || CZ: 8400033083



Unit of measurement: mm  
 CORNER PVC SUPPORT SILICONE CAP  
 COLOR CODES AVAILABLE: BR: 8400033074 || CZ: 8400033084



Unit of measurement: mm  
 180° FIXATION CLIP - POLYCARBONATE Cod: 8400035117



Unit of measurement: mm  
 FIXATION SUPPORT - POLYCARBONATE Cod: 8400035119