

## Description



The 24V Eco LED Bars, just like our 24V LED Bars , aims to create a new lighting concept and considerably reduce even more energy consumptions than previous versions.

Color temperature tolerance of 3 SDCM MacAdam ellipses, defined by ANSI C78.377:2011

Energy Efficiency Class: A+ (EU 874-2012)

LEDs are classified as Risk Group 1 according standard EN62471 Photobiological Safety of Lamps and Lamp Systems.

Our polycarbonate lent Trirex 3030IR, meets the standard for Food contact FDA 21CFR 177.1580 and (EU) No. 10/2011 for European Union

A great flexibility of sizes, (10cm to 220cm) allows to adapt the sizes and luminosity to each project.

With easy installation, allows the use of individual bars for each of the sizes and or join several bars in a continuous line so that the space is suitably illuminated.

## Technical Features:

Power source	Class II constant voltage external LED drive power supply
Voltage	24 ± 3 V DC
Current	210 mA
Power	5.0 ±0.5W
Useful Lifetime	60.000 hours (L70 - 55°C @ 65%H) *
Beam angle	120 ± 5° **
Field angle	Clear: 135 ± 5° Frost: 195 ± 5° ***
Nr of LEDs	49 - SMD
Working Temp.	-20 to 40 °C
Isolation	Class III
Protection degree	IP42
Lumen maintenance	LM80 (Report available: <a href="#">LM-80 9000hrs</a> )
Certificate	CE / RoHs

\*Luminosity depreciation based on L70.

\*\*Beam angle: 50% of maximum lum.

\*\*\*Field angle: 10% of maximum lum.

## Light Technical Data:

Reference	Description	Lum. flux (Lm)*	Eff. (Lm/W)	Color Temp. (K)**	Color	CRI >	Lens type
11052532151 <a href="#">XXYYZZ</a>	LLED Barra 24V 55 WW303 HE ECO DL Clear	560	112	3045 ± 84	Warm	80	Clear
11052524151 <a href="#">XXYYZZ</a>	LLED Barra 24V 55 NW403 ECO DL Clear	543	109	3986 ± 144	Neutral	80	Clear
11052534151 <a href="#">XXYYZZ</a>	LLED Barra 24V 55 NW403 HE ECO DL Clear	585	117	3986 ± 144	Neutral	80	Clear
11052525151 <a href="#">XXYYZZ</a>	LLED Barra 24V 55 CW503 ECO DL Clear	543	109	5029 ± 186	Cool	80	Clear
11052536151 <a href="#">XXYYZZ</a>	LLED Barra 24V 55 CW573 HE ECO DL Clear	585	117	5668 ± 207	Cool	80	Clear
11052527151 <a href="#">XXYYZZ</a>	LLED Barra 24V 55 CW653 ECO DL Clear	543	109	6536 ± 279	Cool	80	Clear
11052532152 <a href="#">XXYYZZ</a>	LLED Barra 24V 55 WW303 HE ECO DL Frost	463	93	3045 ± 84	Warm	80	Frost
11052524152 <a href="#">XXYYZZ</a>	LLED Barra 24V 55 NW403 ECO DL Frost	432	86	3986 ± 144	Neutral	80	Frost
11052534152 <a href="#">XXYYZZ</a>	LLED Barra 24V 55 NW403 HE ECO DL Frost	484	97	3986 ± 144	Neutral	80	Frost
11052525152 <a href="#">XXYYZZ</a>	LLED Barra 24V 55 CW503 ECO DL Frost	432	86	5029 ± 186	Cool	80	Frost
11052536152 <a href="#">XXYYZZ</a>	LLED Barra 24V 55 CW573 HE ECO DL Frost	484	97	5668 ± 207	Cool	80	Frost
11052527152 <a href="#">XXYYZZ</a>	LLED Barra 24V 55 CW653 ECO DL Frost	432	86	6536 ± 279	Cool	80	Frost

\* Luminous flux ± 7.5%

\* Other color temperatures available upon request



## Dimensions



A (mm)	B (mm)	C (mm)	D (mm)	E (mm)	F (mm)	G (mm)
15	12	20	17	544	560	529

## Photometric Data

### Cool white 6500K 3SDCM



#### Photometric Parameters

EEI: 0.15 Energy Efficiency Class: A+ (EU 874-2012)

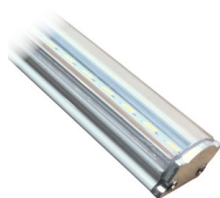
#### CIE Colorimetric Parameters

Chromaticity coordinates:  $x=0.3154$   $y=0.3330$   $u(u')=0.1982$   $v=0.3139$   $v'=0.4709$

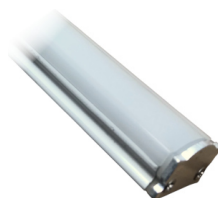
CCT:  $T_c=6338K$  ( $duv=0.00393$ ) CRI:  $R_a=87.4$  Color Ratio:  $R=0.140$   $G=0.803$   $B=0.057$

## Options

### Cover type



Clear



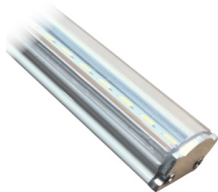
Frost

XXYYZZ - The last six digits are additional options.

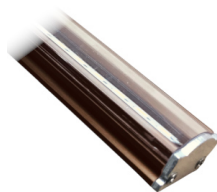
XX - Bar body finishing.



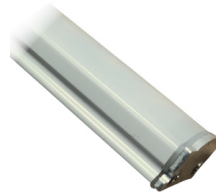
Natural Aluminum  
XX=01



White Aluminum  
XX=02



Brown Aluminum  
XX=03

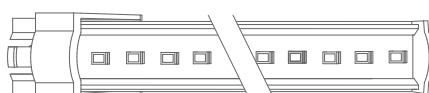


Polycarbonate  
XX=81

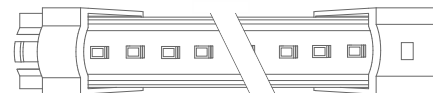
YY - Bar connection.



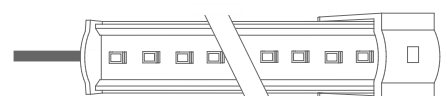
Top Input cable  
YY=01



Male connector input - 1C2P  
YY=04

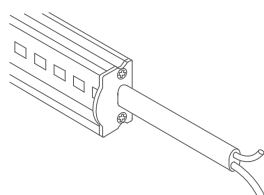


Male connector input female connector output -  
2C2P  
YY=06



Top Input cable output connector - 1C2P+STopo  
YY=08

ZZ - Cable type.



Without connector  
ZZ=00



ASQC2 Connector  
ZZ=27

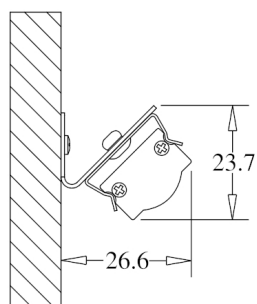


DCJ Connector  
ZZ=41



DC24 Connector  
ZZ=46

# Fixture option



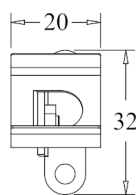
Unit of measurement: mm  
180° CLIP W/ 45° BASE Cod: 8400035115



Unit of measurement: mm  
180 ° FIX CLIP Cod: 8400035111



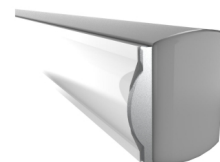
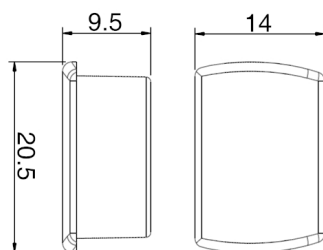
Unit of measurement: mm  
45 ° FIX CLIP Cod: 8400035112



Unit of measurement: mm  
ROTATING CLIP Cod: 8400035114



Unit of measurement: mm  
180 ° PVC SUPPORT  
TYPE: 180°



Unit of measurement: mm  
180 ° PVC SUPPORT SILICONE CAP WHITHOUT HOLE  
COLOR CODES AVAIALE: BR: 8400033071 || CZ: 8400033081



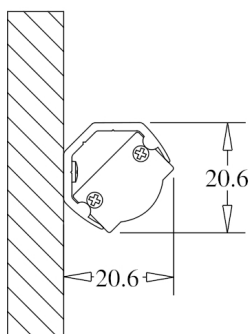
Unit of measurement: mm  
180 ° PVC SUPPORT SILICONE CAP WITH HOLE  
COLOR CODES AVAILABLE: BR: 8400033072 || CZ: 8400033082



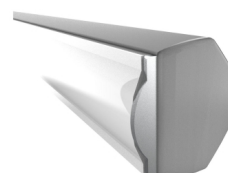
Unit of measurement: mm  
45 ° PVC SUPPORT  
TYPE: 45°



Unit of measurement: mm  
45 ° PVC SUPPORT SILICONE CAP WITH HOLE  
COLOR CODES AVAILABLE: BR Right: 8400033076 || CZ Right: 8400033086 || BR Left: 8400033075 || CZ Left: 8400033085



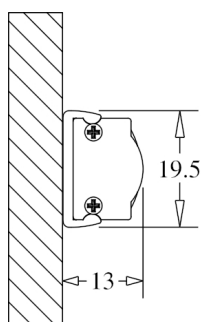
Unit of measurement: mm  
CORNER PVC SUPPORT  
TYPE: CORNER



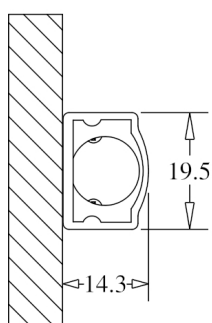
Unit of measurement: mm  
CORNER PVC SUPPORT SILICONE CAP  
COLOR CODES AVAILABLE: BR: 8400033073 || CZ: 8400033083



Unit of measurement: mm  
CORNER PVC SUPPORT SILICONE CAP  
COLOR CODES AVAILABLE: BR: 8400033074 || CZ: 8400033084



Unit of measurement: mm  
180° FIXATION CLIP - POLYCARBONATE Cod: 8400035117



Unit of measurement: mm  
FIXATION SUPPORT - POLYCARBONATE Cod: 8400035119