

Description



The Eco² LED Bars, just like our 3s Led Bars or ECO, aims to create a new lighting concept and considerably reduce even more energy consumptions than previous versions.

Color temperature tolerance of 3 SDCM MacAdam ellipses, defined by ANSI C78.377:2011 LEDs are classified as Risk Group 1 according standard EN62471.

Photobiological Safety of Lamps and Lamp Systems. Our polycarbonate lent Trirex 3030IR, meets the standard for Food contact FDA 21CFR 177.1580 and (EU) No. 10/2011 for European Union.

Huge flexibility size(90-2250mm) allows size and lighting composition for each project.

Easy to install, allows the use of single bars for each sizes, or join several continuous bars so that the lighting space is suitable.

Technical Features:

Power source	Class II constant voltage external LED drive power supply
Voltage	24 ± 3 V DC
Current	167 mA
Power	4.0 ±0.2W
Useful Lifetime	60.000 hours (L70 - 55°C @ 65%H) *
Beam angle	120 ± 5° **
Field angle	Clear: 135 ± 5° Frost: 195 ± 5° ***
Nr of LEDs	46 - SMD
Working Temp.	-20 to 40 °C
Isolation	Class III
Protection degree	IP42
Lumen maintenance	LM80 (Report available: LM-80 9000hrs)
Certificate	CE / RoHs

*Luminosity depreciation based on L70.

**Beam angle: 50% of maximum lum.

***Field angle: 10% of maximum lum.

Light Technical Data:

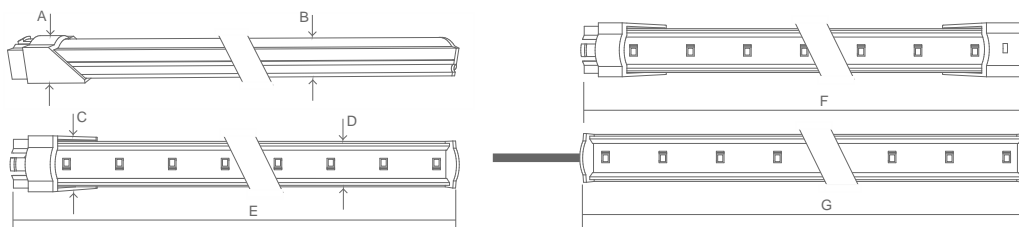
Reference	Description	Lum. flux (Lm)*	Eff. (Lm/W)	Color Temp. (K)**	Color	CRI >	Lens type
11060032161 XXYYZZ	LLED Barra 24V 60 WW303 HE ECO ² DL Clear	441	110	3045 ± 84	Warm	80	Clear
11060042161 XXYYZZ	LLED Barra 24V 60 WW303 E1 ECO ² DL Clear	457	114	3045 ± 84	Warm	80	Clear
11060034161 XXYYZZ	LLED Barra 24V 60 NW403 HE ECO ² DL Clear	461	115	3986 ± 144	Neutral	80	Clear
11060044161 XXYYZZ	LLED Barra 24V 60 NW403 E1 ECO ² DL Clear	483	121	3986 ± 144	Neutral	80	Clear
11060025161 XXYYZZ	LLED Barra 24V 60 CW503 ECO ² DL Clear	406	101	5029 ± 186	Cool	80	Clear
11060036161 XXYYZZ	LLED Barra 24V 60 CW573 HE ECO ² DL Clear	461	115	5668 ± 207	Cool	80	Clear
11060027161 XXYYZZ	LLED Barra 24V 60 CW653 ECO ² DL Clear	406	101	6536 ± 279	Cool	80	Clear
11060032162 XXYYZZ	LLED Barra 24V 60 WW303 HE ECO ² DL Frost	346	86	3045 ± 84	Warm	80	Frost
11060042162 XXYYZZ	LLED Barra 24V 60 WW303 E1 ECO ² DL Frost	348	87	3045 ± 84	Warm	80	Frost
11060034162 XXYYZZ	LLED Barra 24V 60 NW403 HE ECO ² DL Frost	362	90	3986 ± 144	Neutral	80	Frost
11060044162 XXYYZZ	LLED Barra 24V 60 NW403 E1 ECO ² DL Frost	368	92	3986 ± 144	Neutral	80	Frost
11060025162 XXYYZZ	LLED Barra 24V 60 CW503 ECO ² DL Frost	323	81	5029 ± 186	Cool	80	Frost
11060036162 XXYYZZ	LLED Barra 24V 60 CW573 HE ECO ² DL Frost	362	90	5668 ± 207	Cool	80	Frost
11060027162 XXYYZZ	LLED Barra 24V 60 CW653 ECO ² DL Frost	323	81	6536 ± 279	Cool	80	Frost

* Luminous flux ± 7.5%

* Other color temperatures available upon request



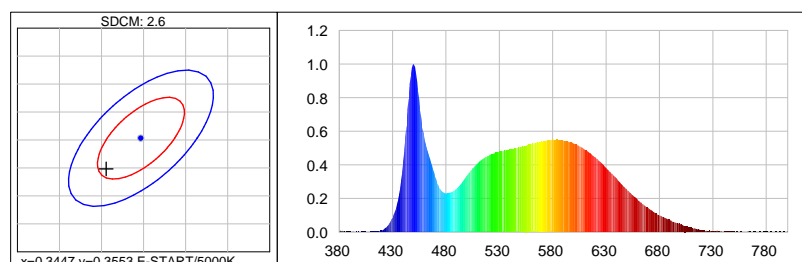
Dimensions



A (mm)	B (mm)	C (mm)	D (mm)	E (mm)	F (mm)	G (mm)
15	12	20	17	619	635	604

Photometric Data

Cool white 5000K 3SDCM



Photometric Parameters

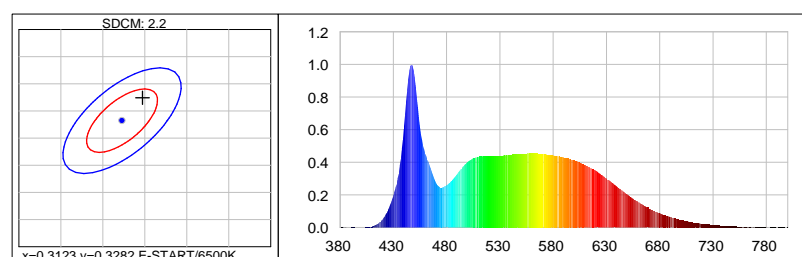
EEL: 0.15 Energy Efficiency Class: A+ (EU 874-2012)

CIE Colorimetric Parameters

Chromaticity coordinates: $x=0.3406$ $y=0.3498$ $u(u')=0.2090$ $v=0.3221$ $v'=0.4831$

CCT: $T_c=5172K$ ($duv=0.00096$) CRI: $R_a=85.4$ Color Ratio: $R=0.156$ $G=0.797$ $B=0.047$

Cool white 6500K 3SDCM



Photometric Parameters

EEL: 0.15

Energy Efficiency Class: A+ (EU 874-2012)

CIE Colorimetric Parameters

Chromaticity coordinates: $x=0.3147$ $y=0.3324$

$u(u')=0.1980$ $v=0.3136$ $v'=0.4704$

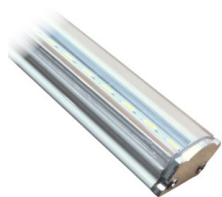
CCT: $T_c=6374K$ ($duv=0.00392$)

CRI: $R_a=87.8$

Color Ratio: $R=0.140$ $G=0.802$ $B=0.058$

Options

Cover type



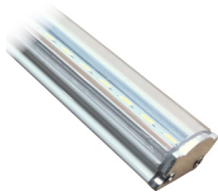
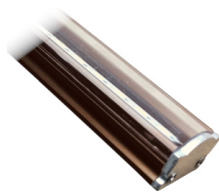
Clear



Frost

XXYYZZ - The last six digits are additional options.

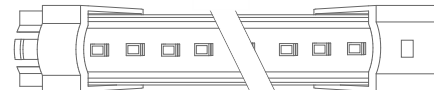
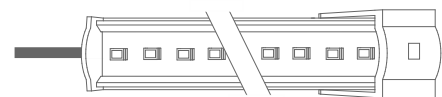
XX - Bar body finishing.


Natural Aluminum
XX=01

White Aluminum
XX=02

Brown Aluminum
XX=03

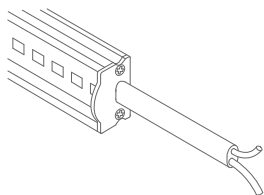
Polycarbonate
XX=81

YY - Bar connection.

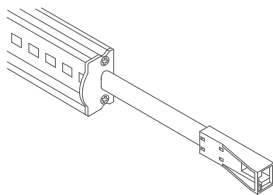

Top Input cable
YY=01

Male connector input - 1C2P
YY=04

Male connector input female connector output -
2C2P
YY=06

Top Input cable output connector - 1C2P+STopo
YY=08

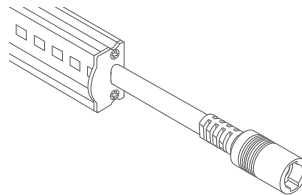
ZZ - Cable type.



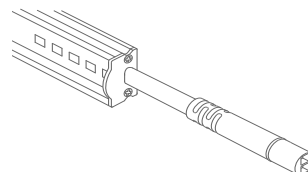
Without connector
ZZ=00



ASQC2 Connector
ZZ=27

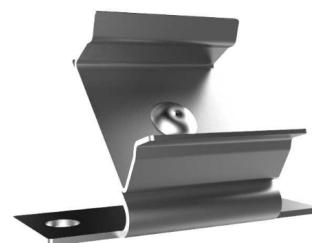
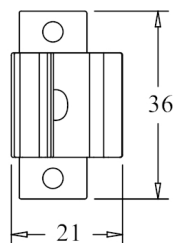
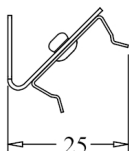
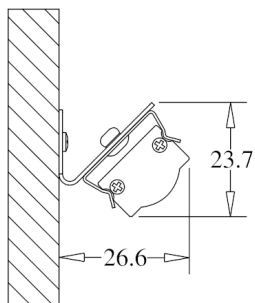


DCJ Connector
ZZ=41

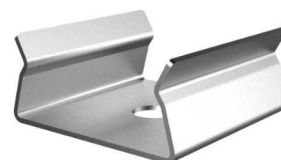
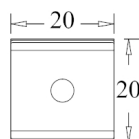
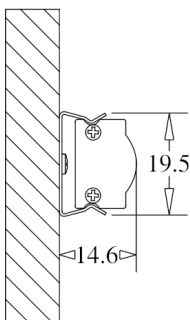


DC24 Connector
ZZ=46

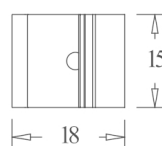
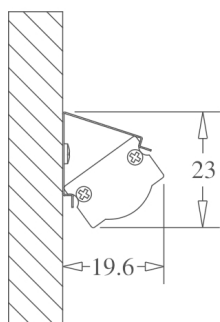
Fixture option



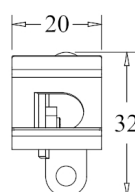
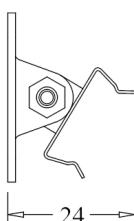
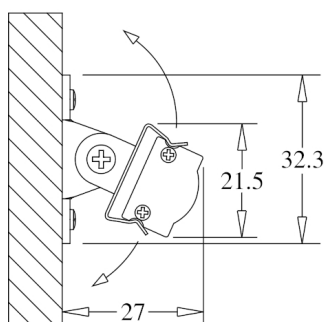
Unit of measurement: mm
180° CLIP W/ 45° BASE Cod: 8400035115



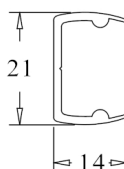
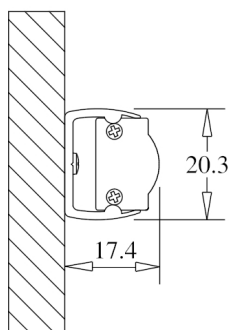
Unit of measurement: mm
180 ° FIX CLIP Cod: 8400035111



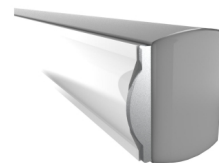
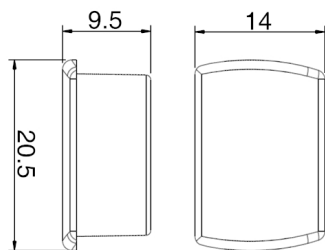
Unit of measurement: mm
45 ° FIX CLIP Cod: 8400035112



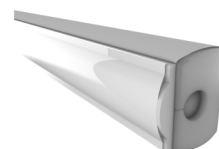
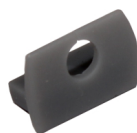
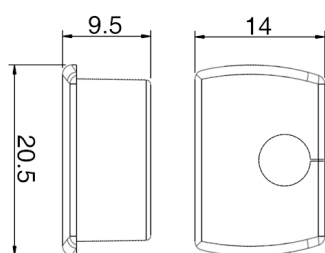
Unit of measurement: mm
ROTATING CLIP Cod: 8400035114



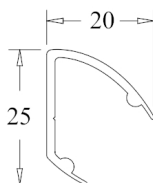
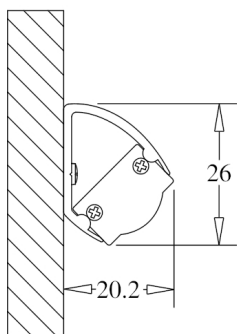
Unit of measurement: mm
180 ° PVC SUPPORT
TYPE: 180°



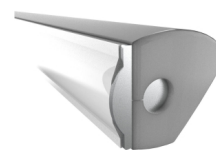
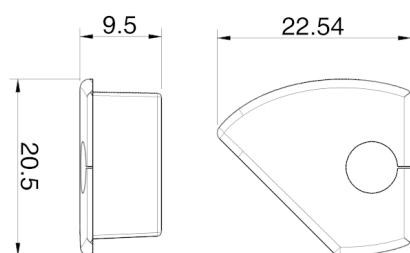
Unit of measurement: mm
180 ° PVC SUPPORT SILICONE CAP WHITHOUT HOLE
COLOR CODES AVAIIABLE: BR: 8400033071 || CZ: 8400033081



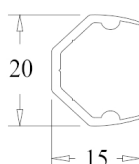
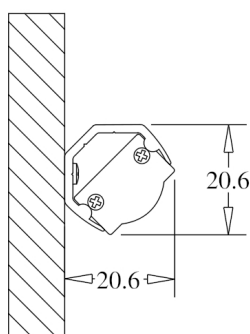
Unit of measurement: mm
180 ° PVC SUPPORT SILICONE CAP WITH HOLE
COLOR CODES AVAIIABLE: BR: 8400033072 || CZ: 8400033082



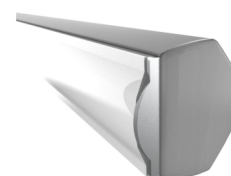
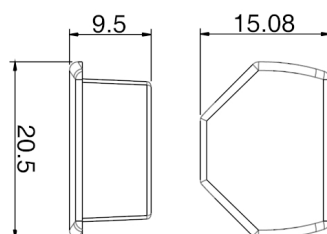
Unit of measurement: mm
45 ° PVC SUPPORT
TYPE: 45°



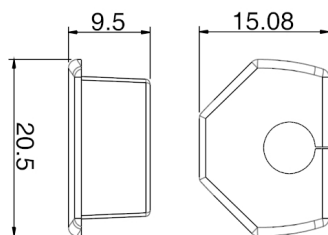
Unit of measurement: mm
 45 ° PVC SUPPORT SILICONE CAP WITH HOLE
 COLOR CODES AVAILABLE: BR Right: 8400033076 || CZ Right: 8400033086 || BR Left: 8400033075 || CZ Left: 8400033085



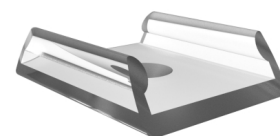
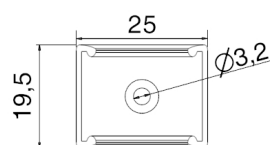
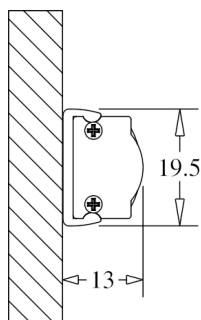
Unit of measurement: mm
 CORNER PVC SUPPORT
 TYPE: CORNER



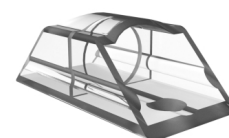
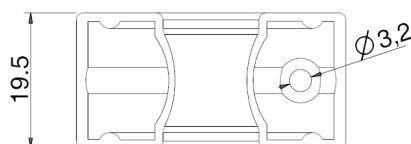
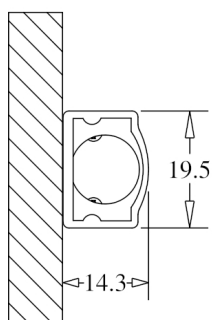
Unit of measurement: mm
 CORNER PVC SUPPORT SILICONE CAP
 COLOR CODES AVAILABLE: BR: 8400033073 || CZ: 8400033083



Unit of measurement: mm
 CORNER PVC SUPPORT SILICONE CAP
 COLOR CODES AVAILABLE: BR: 8400033074 || CZ: 8400033084



Unit of measurement: mm
 180° FIXATION CLIP - POLYCARBONATE Cod: 8400035117



Unit of measurement: mm
 FIXATION SUPPORT - POLYCARBONATE Cod: 8400035119