

Description



The LED bar is intended to create a new lighting concept and greatly reduce energy consumption. Color temperature tolerance of 3 SDCM MacAdam ellipse, according to ANSI C78.377: 2011.

A+ Energy class.

The LEDs meet the Eye safety standard EN62471 classified in RG-1.

The polycarbonate bar lens Trirex 3030IR, meets the food safety standards for FDA 21CFR 177.1580 and the European standard (EU) No. 10/2011.

A great flexibility of sizes, (10cm to 225cm) allows to adapt the sizes and luminosity to each project.

With easy installation, allows the use of individual bars for each of the sizes and or join several bars in a continuous line so that the space is suitably illuminated.

Technical Features:

| | |
|-------------------|---|
| Power source | Class II constant voltage external LED drive power supply |
| Voltage | 24 ± 3 V DC |
| Current | 336 mA |
| Power | 8 ± 0.5 W |
| Useful Lifetime | 60.000 hours (L70 - 55°C @ 65%H) * |
| Beam angle | 120 ± 5° ** |
| Field angle | Clear: 135 ± 5° Frost: 195 ± 5° *** |
| Nr of LEDs | 96 - SMD |
| Working Temp. | -20 to 40 °C |
| Isolation | Class III |
| Protection degree | IP42 |
| Lumen maintenance | LM80 (Report available: LM-80 9000hrs) |
| Certificate | CE / RoHs |

*Luminosity depreciation based on L70.

**Beam angle: 50% of maximum lum.

***Field angle: 10% of maximum lum.

Light Technical Data:

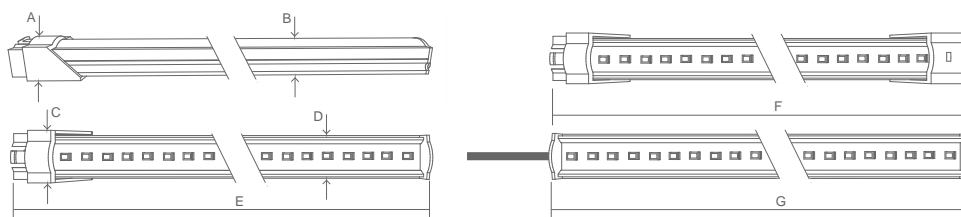
| Reference | Description | Lum. flux (Lm)* | Eff. (Lm/W) | Color Temp. (K)** | Color | CRI > | Lens type |
|------------------------------------|----------------------------------|-----------------|-------------|-------------------|---------|-------|-----------|
| 11060032111 XXYYZZ | LLED Barra 24V 60 WW303 HE Clear | 984 | 123 | 3045 ± 84 | Warm | 80 | Clear |
| 11060034111 XXYYZZ | LLED Barra 24V 60 NW403 HE Clear | 1029 | 129 | 3986 ± 144 | Neutral | 80 | Clear |
| 11060024111 XXYYZZ | LLED Barra 24V 60 NW403 Clear | 982 | 123 | 3986 ± 144 | Neutral | 80 | Clear |
| 11060025111 XXYYZZ | LLED Barra 24V 60 CW503 Clear | 982 | 123 | 5029 ± 186 | Cool | 80 | Clear |
| 11060036111 XXYYZZ | LLED Barra 24V 60 CW573 HE Clear | 1029 | 129 | 5668 ± 207 | Cool | 80 | Clear |
| 11060027111 XXYYZZ | LLED Barra 24V 60 CW653 Clear | 982 | 123 | 6536 ± 279 | Cool | 80 | Clear |
| 11060032112 XXYYZZ | LLED Barra 24V 60 WW303 HE Frost | 845 | 106 | 3045 ± 84 | Warm | 80 | Frost |
| 11060034112 XXYYZZ | LLED Barra 24V 60 NW403 HE Frost | 884 | 110 | 3986 ± 144 | Neutral | 80 | Frost |
| 11060024112 XXYYZZ | LLED Barra 24V 60 NW403 Frost | 803 | 100 | 3986 ± 144 | Neutral | 80 | Frost |
| 11060025112 XXYYZZ | LLED Barra 24V 60 CW503 Frost | 803 | 100 | 5029 ± 186 | Cool | 80 | Frost |
| 11060036112 XXYYZZ | LLED Barra 24V 60 CW573 HE Frost | 884 | 110 | 5668 ± 207 | Cool | 80 | Frost |
| 11060027112 XXYYZZ | LLED Barra 24V 60 CW653 Frost | 803 | 100 | 6536 ± 279 | Cool | 80 | Frost |

* Luminous flux ± 7.5%

** Other color temperatures available upon request



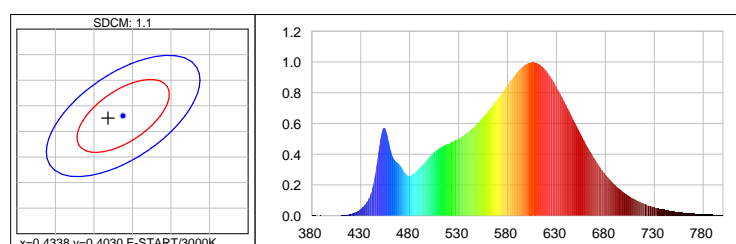
Dimensions



| A (mm) | B (mm) | C (mm) | D (mm) | E (mm) | F (mm) | G (mm) |
|--------|--------|--------|--------|--------|--------|--------|
| 15 | 12 | 20 | 17 | 619 | 635 | 604 |

Photometric Data

Warm white 3000K 3SDCM



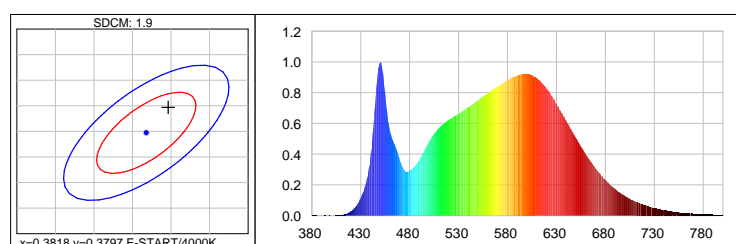
Photometric Parameters
EEI: 0.14

Energy Efficiency Class: A+ (EU 874-2012)

CIE Colorimetric Parameters

Chromaticity coordinates: $x=0.4318$ $y=0.4026$ $u(u')=0.2479$ $v=0.3467$ $v'=0.5200$
CCT: $T_c=3075K$ ($duv=0.00012$) CRI: $R_a=84.9$ Color Ratio: $R=0.229$ $G=0.739$ $B=0.032$

Neutral white 4000K 3SDCM



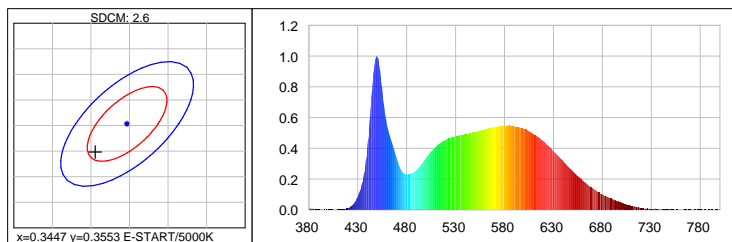
Photometric Parameters
EEI: 0.13

Energy Efficiency Class: A+ (EU 874-2012)

CIE Colorimetric Parameters

Chromaticity coordinates: $x=0.3846$ $y=0.3847$ $u(u')=0.2247$ $v=0.3371$ $v'=0.5056$
CCT: $T_c=3947K$ ($duv=0.00246$) CRI: $R_a=84.5$ Color Ratio: $R=0.186$ $G=0.777$ $B=0.037$

Cool white 5000K 3SDCM



Photometric Parameters

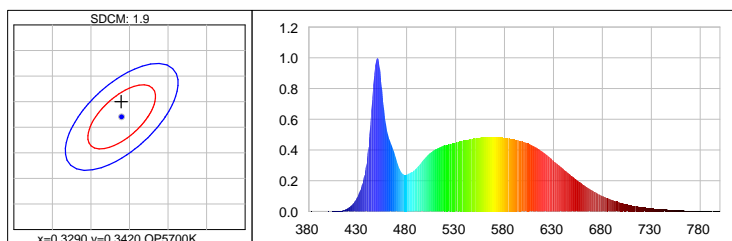
EEL: 0.15 Energy Efficiency Class: A+ (EU 874-2012)

CIE Colorimetric Parameters

Chromaticity coordinates: x=0.3406 y=0.3498 u(u')=0.2090 v=0.3221 v'=0.4831

CCT: Tc=5172K (duv=0.00096) CRI: Ra= 85.4 Color Ratio: R=0.156 G=0.797 B=0.047

Cool white 5700K 3SDCM



Photometric Parameters

EEL: 0.14

Energy Efficiency Class: A+ (EU 874-2012)

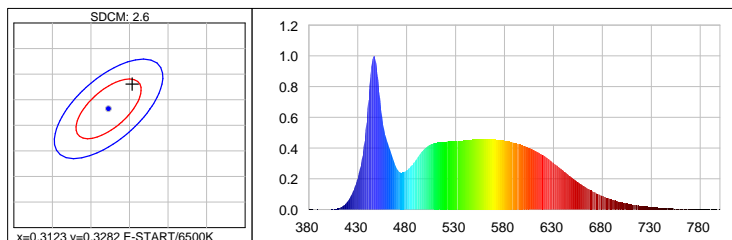
CIE Colorimetric Parameters

Chromaticity coordinates: x=0.3289 y=0.3450

u(u')=0.2030 v=0.3193 v'=0.4790

CCT: Tc=5654K (duv=0.00356) CRI: Ra= 86.6 Color Ratio: R=0.147 G=0.800 B=0.053

Cool white 6500K 3SDCM



Photometric Parameters

EEL: 0.15

Energy Efficiency Class: A+ (EU 874-2012)

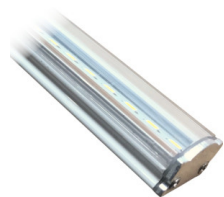
CIE Colorimetric Parameters

Chromaticity coordinates: x=0.3154 y=0.3330 u(u')=0.1982 v=0.3139 v'=0.4709

CCT: Tc=6338K (duv=0.00393) CRI: Ra= 87.4 Color Ratio: R=0.140 G=0.803 B=0.057

Options

Cover type



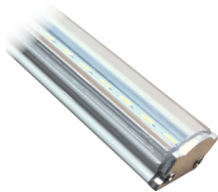
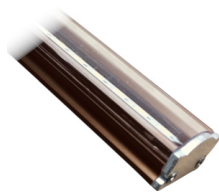
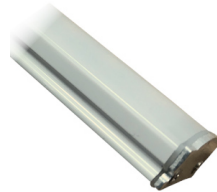
Clear



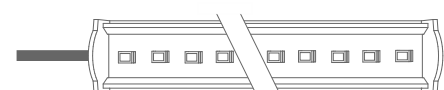
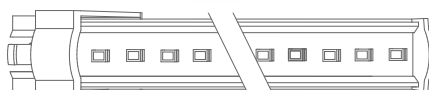
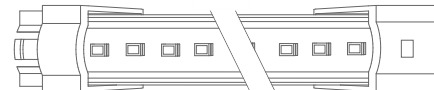
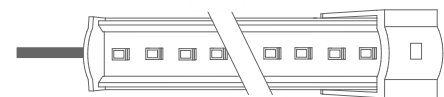
Frost

XXYYZZ - The last six digits are additional options.

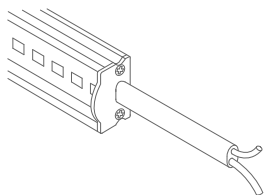
XX - Bar body finishing.


Natural Aluminum
XX=01

White Aluminum
XX=02

Brown Aluminum
XX=03

Polycarbonate
XX=81

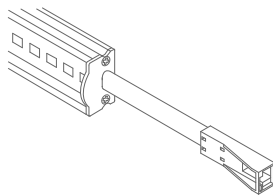
YY - Bar connection.


Top Input cable
YY=01

Male connector input - 1C2P
YY=04

Male connector input female connector output -
2C2P
YY=06

Top Input cable output connector - 1C2P+STopo
YY=08

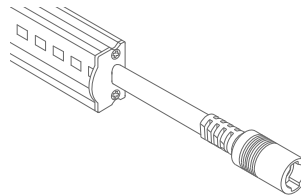
ZZ - Cable type.



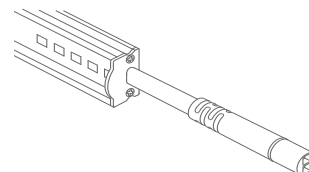
Without connector
ZZ=00



ASQC2 Connector
ZZ=27

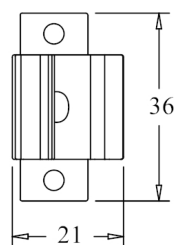
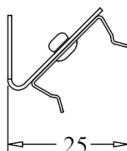
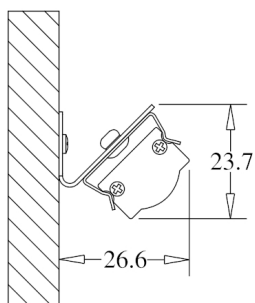


DCJ Connector
ZZ=41

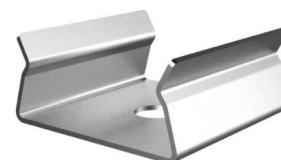
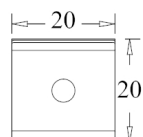
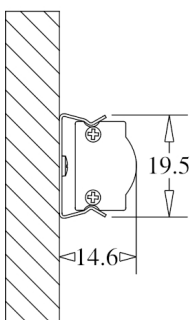


DC24 Connector
ZZ=46

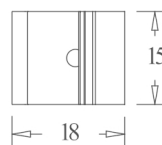
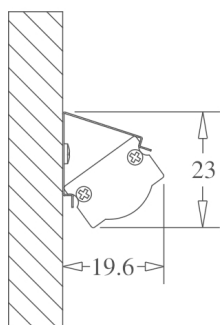
Fixture option



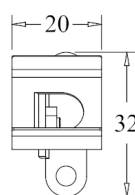
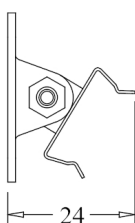
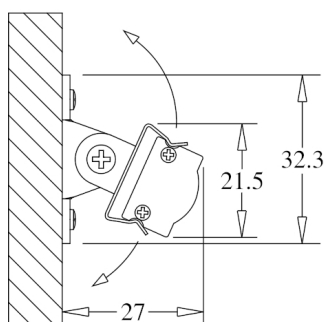
Unit of measurement: mm
180° CLIP W/ 45° BASE Cod: 8400035115



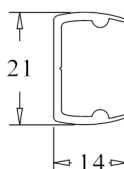
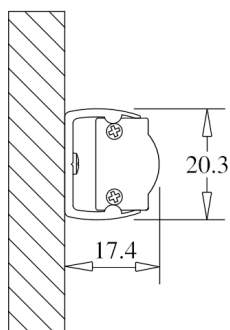
Unit of measurement: mm
180 ° FIX CLIP Cod: 8400035111



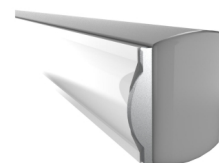
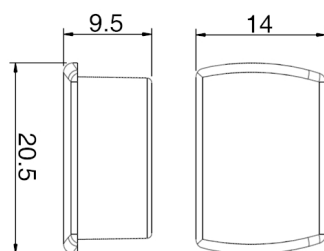
Unit of measurement: mm
45 ° FIX CLIP Cod: 8400035112



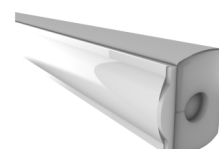
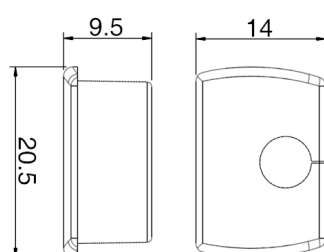
Unit of measurement: mm
ROTATING CLIP Cod: 8400035114



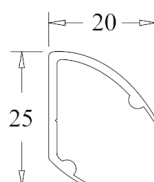
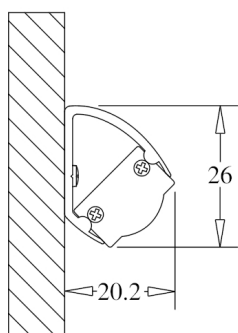
Unit of measurement: mm
180 ° PVC SUPPORT
TYPE: 180°



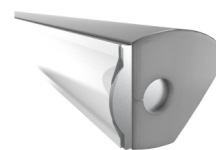
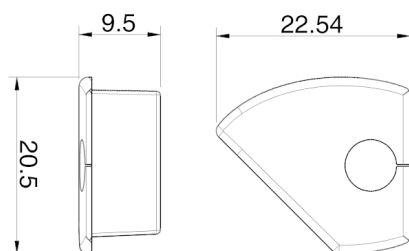
Unit of measurement: mm
180 ° PVC SUPPORT SILICONE CAP WHITHOUT HOLE
COLOR CODES AVAIALE: BR: 8400033071 || CZ: 8400033081



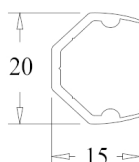
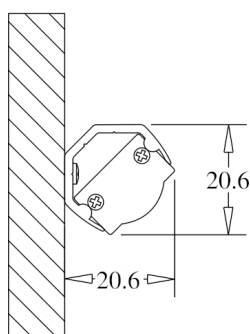
Unit of measurement: mm
180 ° PVC SUPPORT SILICONE CAP WITH HOLE
COLOR CODES AVAIALE: BR: 8400033072 || CZ: 8400033082



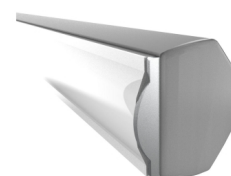
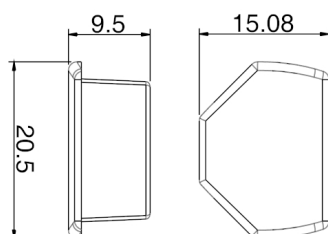
Unit of measurement: mm
45 ° PVC SUPPORT
TYPE: 45°



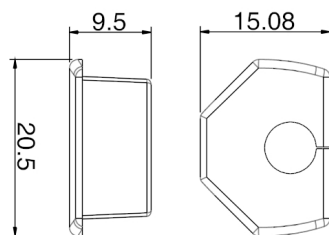
Unit of measurement: mm
45 ° PVC SUPPORT SILICONE CAP WITH HOLE
COLOR CODES AVAIALE: BR Right: 8400033076 || CZ Right: 8400033086 || BR Left: 8400033075 || CZ Left: 8400033085



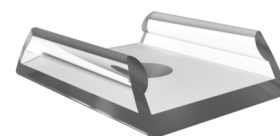
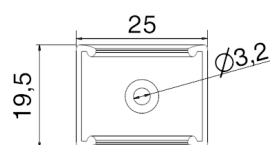
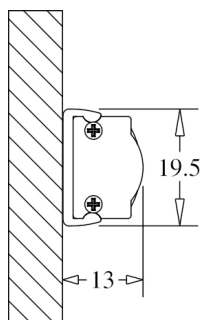
Unit of measurement: mm
CORNER PVC SUPPORT
TYPE: CORNER



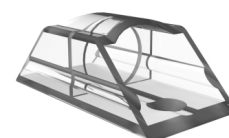
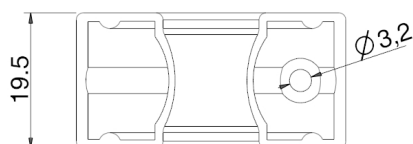
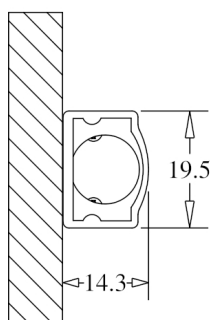
Unit of measurement: mm
CORNER PVC SUPPORT SILICONE CAP
COLOR CODES AVAIALE: BR: 8400033073 || CZ: 8400033083



Unit of measurement: mm
CORNER PVC SUPPORT SILICONE CAP
COLOR CODES AVAILABLE: BR: 8400033074 || CZ: 8400033084



Unit of measurement: mm
180° FIXATION CLIP - POLYCARBONATE Cod: 8400035117



Unit of measurement: mm
FIXATION SUPPORT - POLYCARBONATE Cod: 8400035119