

Descrição



A Barra LED 24V ECO, tem como finalidade criar um novo conceito de iluminação e obter redução significativa nos consumos de energia elétrica ainda mais significativos que as anteriores gamas das Barras.

Margem da temperatura de cor de 3 SDCM tendo como referência o centro da elipse de MacAdam segundo a norma ANSI C78.377:2011.

Os LEDs cumprem a norma Eye Safety EN62471 classificados no Grupo de Risco 1.

A lente da barra em policarbonato Trirex 3030IR, cumpre as normas de segurança alimentar para Food Contact FDA 21CFR 177.1580 e a norma europeia (EU) No. 10/2011.

Uma grande flexibilidade de tamanhos, (10cm a 225cm) permite adequar a composição dos tamanhos e luminosidade a cada projeto.

Permite a utilização de barras individuais por cada um dos tamanhos e ou juntar várias barras em linha contínua de forma que o espaço a iluminar seja o mais adequado.

Características:

Fonte de Alimentação	Fonte externa LED drive voltagem constante classe II
Voltagem	24 ± 3 V DC
Corrente	270 mA
Potência	6.5 ±0.5W
Tempo de Vida Útil	60.000 horas (L70 - 55°C @ 65%H) *
Feixe de luz	120 ± 5° **
Abertura de luz	Transparente: 135 ± 5° Difuso: 195 ± 5° ***
Nº de LEDs	63 - SMD
Temp. Funcionamento	-20 a 40 °C
Isolamento	Classe III
Grau de protecção	IP42
Conservação Luminosa	LM80 (Relatório disponível: LM-80 9000hrs)
Certificado	CE / RoHs

* Depreciação luminosa baseada no L70.

** Feixe de luz: 50% da lum. máxima.

*** Abertura de luz: 10% da lum. máxima.

Características Luminotécnicas:

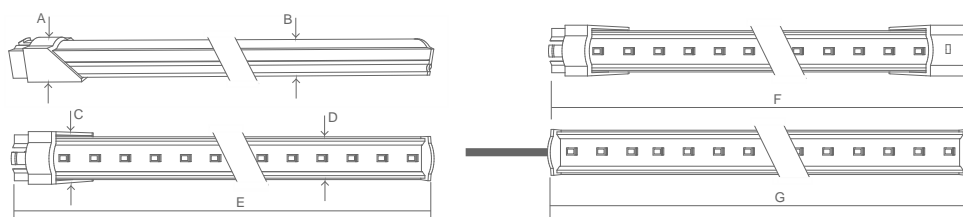
Referência	Descrição	Fluxo Lum. (Lm)*	Efi. (Lm/W)	Temperatura Cor (K)**	Cor	CRI >	Tipo de Lente
11067532151 XXYYZZ	LLED Barra 24V 70 WW303 HE ECO DL Clear	720	111	3045 ± 84	Quente	80	Transparente
11067524151 XXYYZZ	LLED Barra 24V 70 NW403 ECO DL Clear	699	107	3986 ± 144	Neutro	80	Transparente
11067534151 XXYYZZ	LLED Barra 24V 70 NW403 HE ECO DL Clear	753	116	3986 ± 144	Neutro	80	Transparente
11067525151 XXYYZZ	LLED Barra 24V 70 CW503 ECO DL Clear	699	107	5029 ± 186	Frio	80	Transparente
11067536151 XXYYZZ	LLED Barra 24V 70 CW573 HE ECO DL Clear	753	116	5668 ± 207	Frio	80	Transparente
11067527151 XXYYZZ	LLED Barra 24V 70 CW653 ECO DL Clear	699	107	6536 ± 279	Frio	80	Transparente
11067532152 XXYYZZ	LLED Barra 24V 70 WW303 HE ECO DL Frost	595	92	3045 ± 84	Quente	80	Difuso
11067524152 XXYYZZ	LLED Barra 24V 70 NW403 ECO DL Frost	556	85	3986 ± 144	Neutro	80	Difuso
11067534152 XXYYZZ	LLED Barra 24V 70 NW403 HE ECO DL Frost	623	96	3986 ± 144	Neutro	80	Difuso
11067525152 XXYYZZ	LLED Barra 24V 70 CW503 ECO DL Frost	556	85	5029 ± 186	Frio	80	Difuso
11067536152 XXYYZZ	LLED Barra 24V 70 CW573 HE ECO DL Frost	623	96	5668 ± 207	Frio	80	Difuso
11067527152 XXYYZZ	LLED Barra 24V 70 CW653 ECO DL Frost	556	85	6536 ± 279	Frio	80	Difuso

* Fluxo Luminoso ± 7.5%

** Outras temperaturas de cor disponíveis sob encomenda.



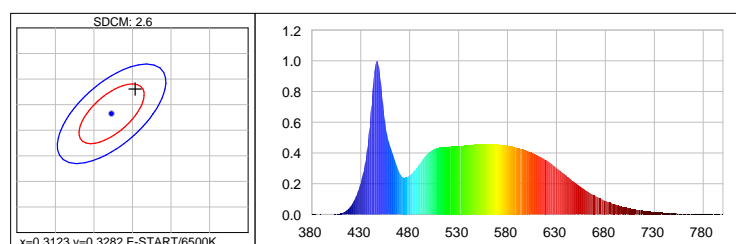
Dimensões



A (mm)	B (mm)	C (mm)	D (mm)	E (mm)	F (mm)	G (mm)
15	12	20	17	694	710	679

Dados Fotométricos

Branco frio 6500K 3SDCM



Photometric Parameters

EEI: 0.15 Energy Efficiency Class: A+ (EU 874-2012)

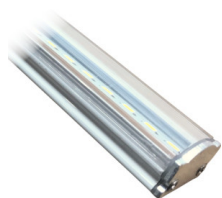
CIE Colorimetric Parameters

Chromaticity coordinates: x=0.3154 y=0.3330 u(u')=0.1982 v=0.3139 v'=0.4709

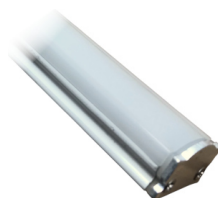
CCT: Tc=6338K (duv=0.00393) CRI: Ra= 87.4 Color Ratio: R=0.140 G=0.803 B=0.057

Opções

Tipo de Lente



Transparente



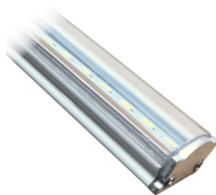
Difuso

XXYYZZ - Os últimos seis algarismos são opções adicionais.

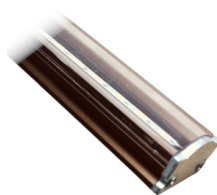
XX - Acabamento do corpo da barra.



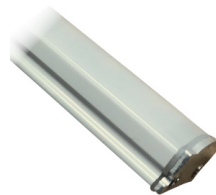
Alumínio natural
XX=01



Alumínio branco
XX=02

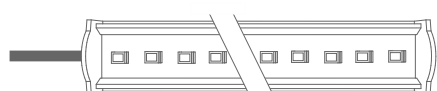


Alumínio castanho
XX=03

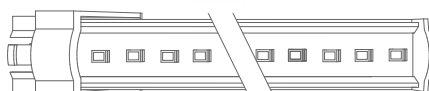


Policarbonato Frost
XX=81

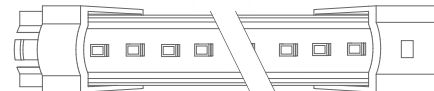
YY - Modo de ligação da barra.



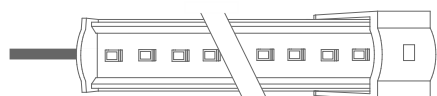
Entrada cabo topo
YY=01



Entrada conector macho - 1C2P
YY=04

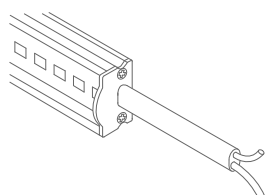


Entrada conector macho saída conector fêmea -
2C2P
YY=06

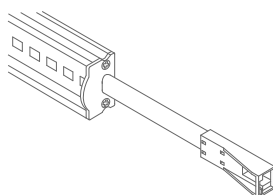


Entrada cabo topo saída conector - 1C2P+STopo
YY=08

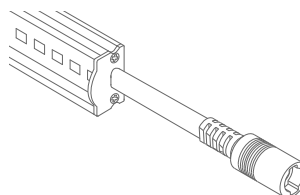
ZZ - Tipo de cabo.



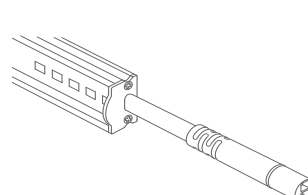
Sem conector
ZZ=00



Conector ASQC2
ZZ=27

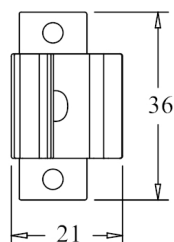
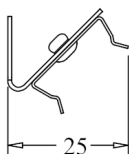
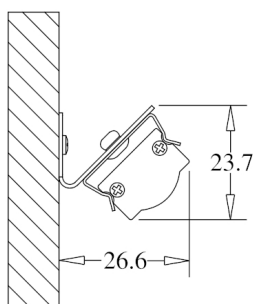


Conector DCJ
ZZ=41

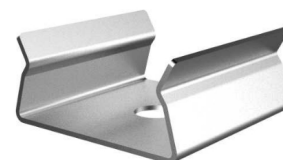
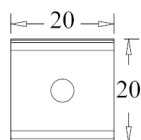
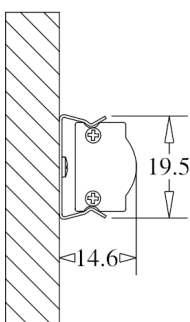


Conector DC24
ZZ=46

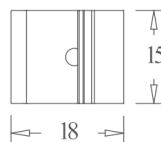
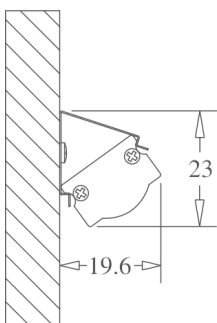
Opções de Fixação



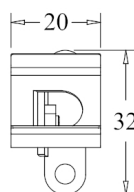
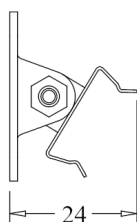
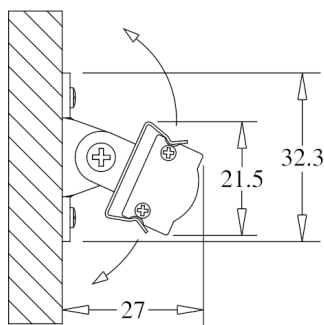
Unidade de medida: mm
CLIP 180 ° C/ BASE 45 ° Cod: 8400035115



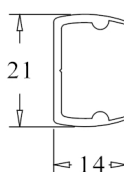
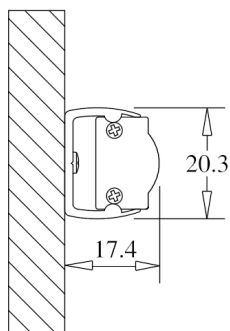
Unidade de medida: mm
CLIP FIXO 180 ° Cod: 8400035111



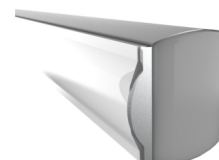
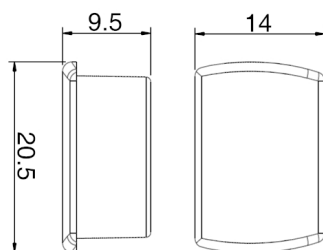
Unidade de medida: mm
CLIP FIXO 45 ° Cod: 8400035112



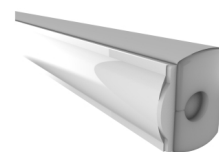
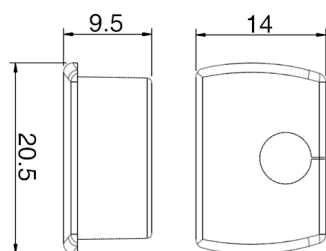
Unidade de medida: mm
CLIP ROTATIVO Cod: 8400035114



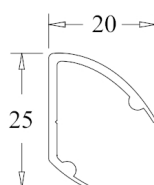
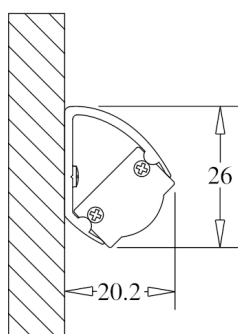
Unidade de medida: mm
SUPORTE PVC 180°
TIPO: 180°



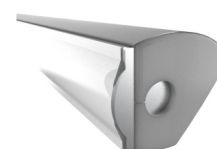
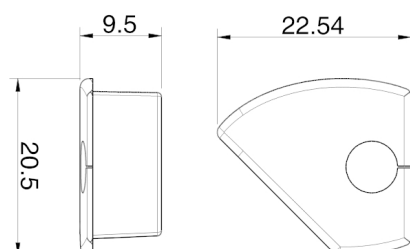
Unidade de medida: mm
TAMPA SILICONE SUPORTE PVC 180 ° S/ FURO
CÓDIGOS CORES DISPONÍVEIS: BR: 8400033071 || CZ: 8400033081



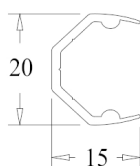
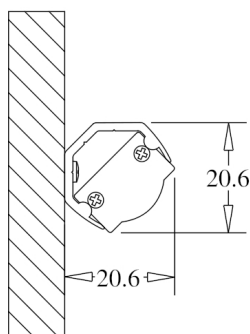
Unidade de medida: mm
TAMPA SILICONE SUPORTE PVC 180 ° C/ FURO
CÓDIGOS CORES DISPONÍVEIS: BR: 8400033072 || CZ: 8400033082



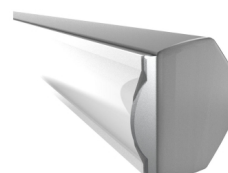
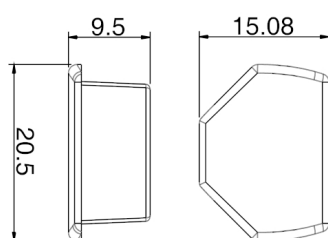
Unidade de medida: mm
SUPORTE PVC 45°
TIPO: 45°



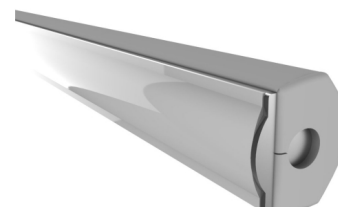
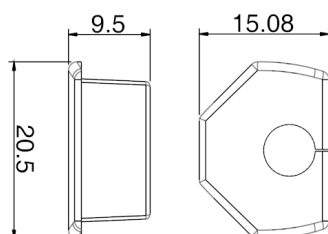
Unidade de medida: mm
TAMPA SILICONE SUPORTE PVC 45 ° C/ FURO
CÓDIGOS CORES DISPONÍVEIS: BR Dir: 8400033076 || CZ Dir: 8400033086 || BR Esq: 8400033075 || CZ Esq: 8400033085



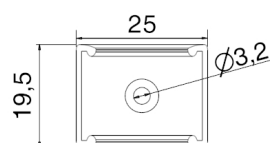
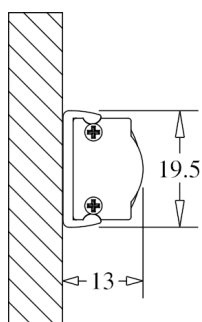
Unidade de medida: mm
SUPORTE PVC DE CANTO
TIPO: CANTO



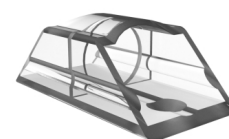
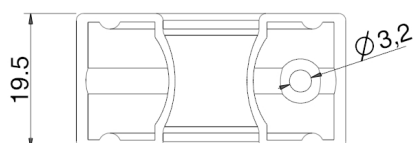
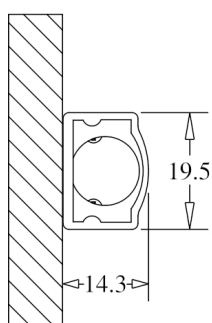
Unidade de medida: mm
TAMPA SILICONE SUPORTE PVC CANTO
CÓDIGOS CORES DISPONÍVEIS: BR: 8400033073 || CZ: 8400033083



Unidade de medida: mm
TAMPA SILICONE SUPORTE PVC CANTO
CÓDIGOS CORES DISPONÍVEIS: BR: 8400033074 || CZ: 8400033084



Unidade de medida: mm
CLIP FIXAÇÃO 180 ° - POLICARBONATO Cod: 8400035117



Unidade de medida: mm
SUPORTE FIXAÇÃO - POLICARBONATO Cod: 8400035119