

## Description



The 24V Eco LED Bars, just like our 24V LED Bars , aims to create a new lighting concept and considerably reduce even more energy consumptions than previous versions.

Color temperature tolerance of 3 SDCM MacAdam ellipses, defined by ANSI C78.377:2011

Energy Efficiency Class: A+ (EU 874-2012)

LEDs are classified as Risk Group 1 according standard EN62471 Photobiological Safety of Lamps and Lamp Systems.

Our polycarbonate lent Trirex 3030IR, meets the standard for Food contact FDA 21CFR 177.1580 and (EU) No. 10/2011 for European Union

A great flexibility of sizes, (10cm to 220cm) allows to adapt the sizes and luminosity to each project.

With easy installation, allows the use of individual bars for each of the sizes and or join several bars in a continuous line so that the space is suitably illuminated.

## Technical Features:

Power source	Class II constant voltage external LED drive power supply
Voltage	24 ± 3 V DC
Current	300 mA
Power	7.2 ±0.5W
Useful Lifetime	60.000 hours (L70 - 55°C @ 65%H) *
Beam angle	120 ± 5° **
Field angle	Clear: 135 ± 5° Frost: 195 ± 5° ***
Nr of LEDs	70 - SMD
Working Temp.	-20 to 40 °C
Isolation	Class III
Protection degree	IP42
Lumen maintenance	LM80 (Report available: <a href="#">LM-80 9000hrs</a> )
Certificate	CE / RoHs

\*Luminosity depreciation based on L70.

\*\*Beam angle: 50% of maximum lum.

\*\*\*Field angle: 10% of maximum lum.

## Light Technical Data:

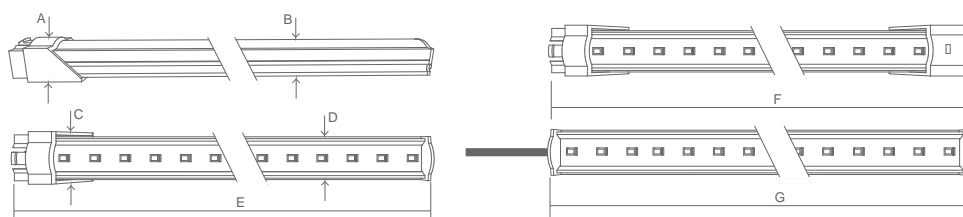
Reference	Description	Lum. flux (Lm)*	Eff. (Lm/W)	Color Temp. (K)**	Color	CRI >	Lens type
11075032151 <a href="#">XXYYZZ</a>	LLED Barra 24V 80 WW303 HE ECO DL Clear	800	111	3045 ± 84	Warm	80	Clear
11075024151 <a href="#">XXYYZZ</a>	LLED Barra 24V 80 NW403 ECO DL Clear	776	108	3986 ± 144	Neutral	80	Clear
11075034151 <a href="#">XXYYZZ</a>	LLED Barra 24V 80 NW403 HE ECO DL Clear	836	116	3986 ± 144	Neutral	80	Clear
11075025151 <a href="#">XXYYZZ</a>	LLED Barra 24V 80 CW503 ECO DL Clear	776	108	5029 ± 186	Cool	80	Clear
11075036151 <a href="#">XXYYZZ</a>	LLED Barra 24V 80 CW573 HE ECO DL Clear	836	116	5668 ± 207	Cool	80	Clear
11075027151 <a href="#">XXYYZZ</a>	LLED Barra 24V 80 CW653 ECO DL Clear	776	108	6536 ± 279	Cool	80	Clear
11075032152 <a href="#">XXYYZZ</a>	LLED Barra 24V 80 WW303 HE ECO DL Frost	661	92	3045 ± 84	Warm	80	Frost
11075024152 <a href="#">XXYYZZ</a>	LLED Barra 24V 80 NW403 ECO DL Frost	617	86	3986 ± 144	Neutral	80	Frost
11075034152 <a href="#">XXYYZZ</a>	LLED Barra 24V 80 NW403 HE ECO DL Frost	692	96	3986 ± 144	Neutral	80	Frost
11075025152 <a href="#">XXYYZZ</a>	LLED Barra 24V 80 CW503 ECO DL Frost	617	86	5029 ± 186	Cool	80	Frost
11075036152 <a href="#">XXYYZZ</a>	LLED Barra 24V 80 CW573 HE ECO DL Frost	692	96	5668 ± 207	Cool	80	Frost
11075027152 <a href="#">XXYYZZ</a>	LLED Barra 24V 80 CW653 ECO DL Frost	617	86	6536 ± 279	Cool	80	Frost

\* Luminous flux ± 7.5%

\* Other color temperatures available upon request



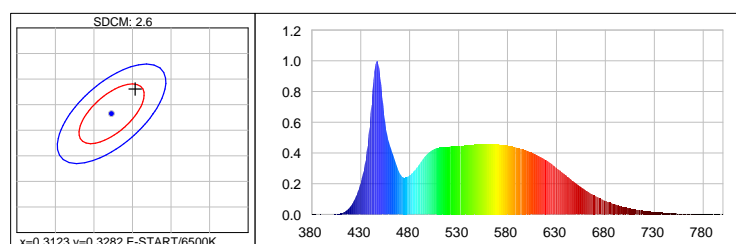
## Dimensions



A (mm)	B (mm)	C (mm)	D (mm)	E (mm)	F (mm)	G (mm)
15	12	20	17	769	785	754

## Photometric Data

### Cool white 6500K 3SDCM



#### Photometric Parameters

EEI: 0.15 Energy Efficiency Class: A+ (EU 874-2012)

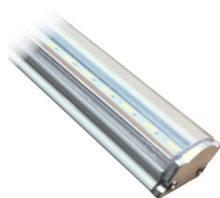
#### CIE Colorimetric Parameters

Chromaticity coordinates:  $x=0.3154$   $y=0.3330$   $u(u')=0.1982$   $v=0.3139$   $v'=0.4709$

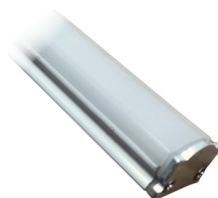
CCT:  $T_c=6338K$  ( $duv=0.00393$ ) CRI:  $R_a=87.4$  Color Ratio:  $R=0.140$   $G=0.803$   $B=0.057$

## Options

### Cover type



Clear



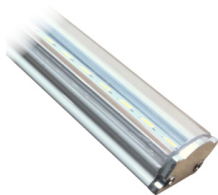
Frost

XXYYZZ - The last six digits are additional options.

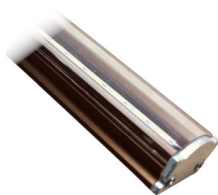
XX - Bar body finishing.



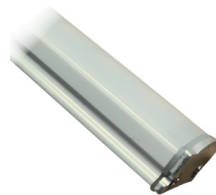
Natural Aluminum  
XX=01



White Aluminum  
XX=02

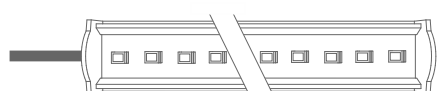


Brown Aluminum  
XX=03

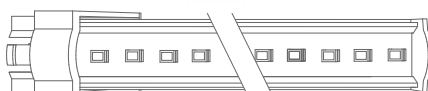


Polycarbonate  
XX=81

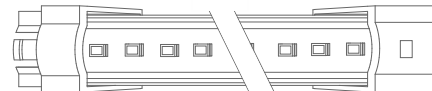
YY - Bar connection.



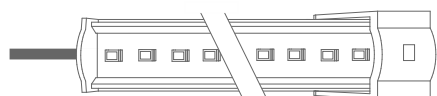
Top Input cable  
YY=01



Male connector input - 1C2P  
YY=04

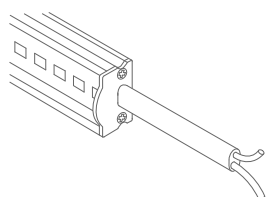


Male connector input female connector output -  
2C2P  
YY=06

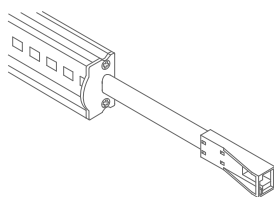


Top Input cable output connector - 1C2P+STopo  
YY=08

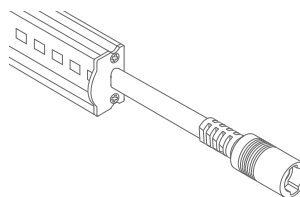
ZZ - Cable type.



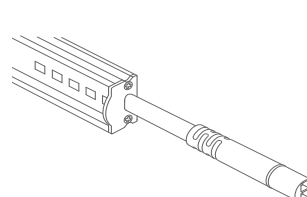
Without connector  
ZZ=00



ASQC2 Connector  
ZZ=27

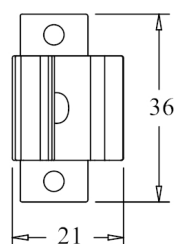
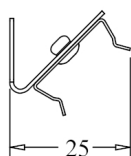
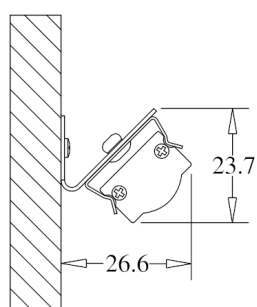


DCJ Connector  
ZZ=41

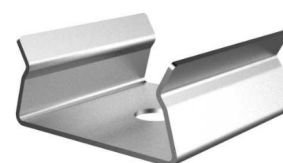
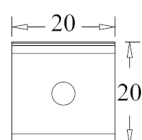
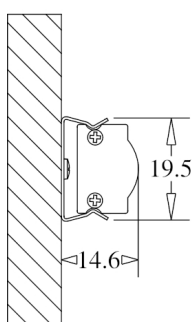


DC24 Connector  
ZZ=46

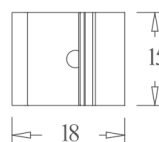
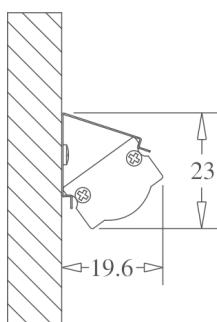
# Fixture option



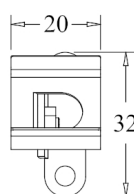
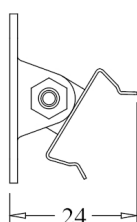
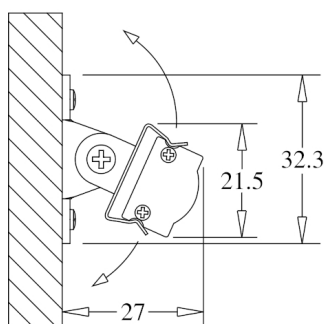
Unit of measurement: mm  
180° CLIP W/ 45° BASE Cod: 8400035115



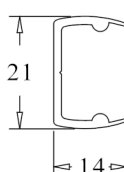
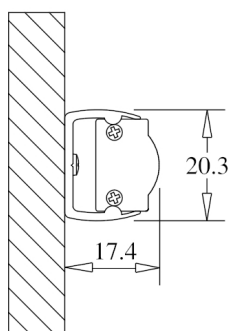
Unit of measurement: mm  
180 ° FIX CLIP Cod: 8400035111



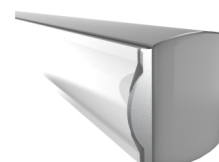
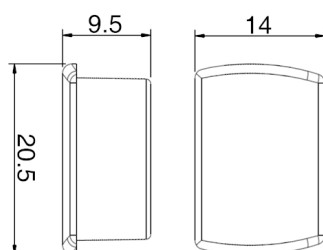
Unit of measurement: mm  
45 ° FIX CLIP Cod: 8400035112



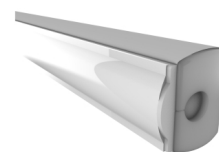
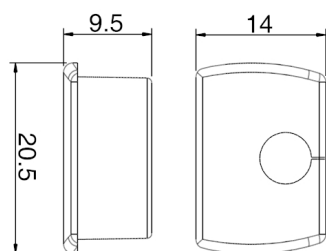
Unit of measurement: mm  
ROTATING CLIP Cod: 8400035114



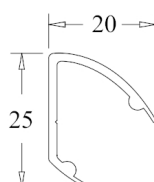
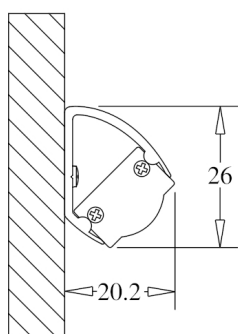
Unit of measurement: mm  
180 ° PVC SUPPORT  
TYPE: 180°



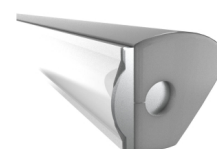
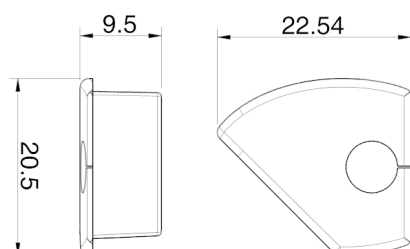
Unit of measurement: mm  
180 ° PVC SUPPORT SILICONE CAP WHITHOUT HOLE  
COLOR CODES AVAIALE: BR: 8400033071 || CZ: 8400033081



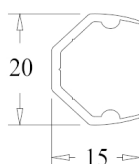
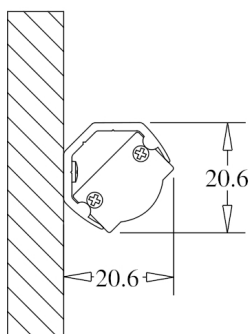
Unit of measurement: mm  
180 ° PVC SUPPORT SILICONE CAP WITH HOLE  
COLOR CODES AVAILABLE: BR: 8400033072 || CZ: 8400033082



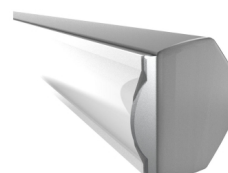
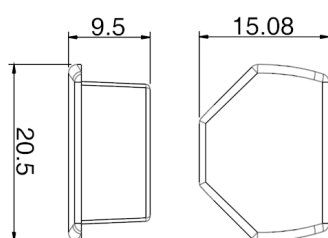
Unit of measurement: mm  
45 ° PVC SUPPORT  
TYPE: 45°



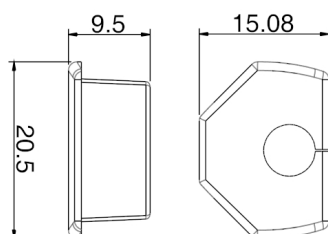
Unit of measurement: mm  
45 ° PVC SUPPORT SILICONE CAP WITH HOLE  
COLOR CODES AVAILABLE: BR Right: 8400033076 || CZ Right: 8400033086 || BR Left: 8400033075 || CZ Left: 8400033085



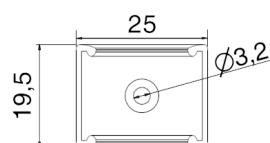
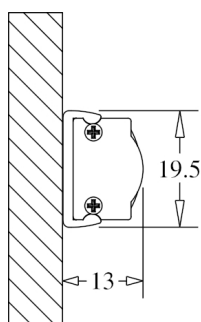
Unit of measurement: mm  
CORNER PVC SUPPORT  
TYPE: CORNER



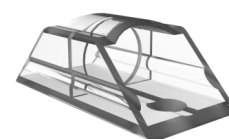
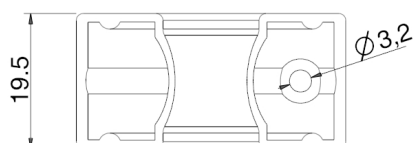
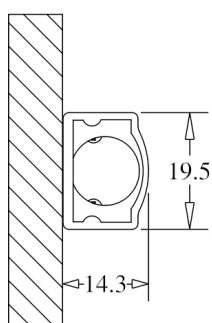
Unit of measurement: mm  
CORNER PVC SUPPORT SILICONE CAP  
COLOR CODES AVAILABLE: BR: 8400033073 || CZ: 8400033083



Unit of measurement: mm  
CORNER PVC SUPPORT SILICONE CAP  
COLOR CODES AVAILABLE: BR: 8400033074 || CZ: 8400033084



Unit of measurement: mm  
180° FIXATION CLIP - POLYCARBONATE Cod: 8400035117



Unit of measurement: mm  
FIXATION SUPPORT - POLYCARBONATE Cod: 8400035119