

## Description



The Eco<sup>2</sup> LED Bars, just like our 3s Led Bars or ECO, aims to create a new lighting concept and considerably reduce even more energy consumptions than previous versions.

Color temperature tolerance of 3 SDCM MacAdam ellipses, defined by ANSI C78.377:2011 LEDs are classified as Risk Group 1 according standard EN62471.

Photobiological Safety of Lamps and Lamp Systems. Our polycarbonate lent Trirex 3030IR, meets the standard for Food contact FDA 21CFR 177.1580 and (EU) No. 10/2011 for European Union.

Huge flexibility size(90-2250mm) allows size and lighting composition for each project.

Easy to install, allows the use of single bars for each sizes, or join several continuous bars so that the lighting space is suitable.

## Technical Features:

Power source	Class II constant voltage external LED drive power supply
Voltage	24 ± 3 V DC
Current	238 mA
Power	5.7 ±0.5W
Useful Lifetime	60.000 hours (L70 - 55°C @ 65%H) *
Beam angle	120 ± 5° **
Field angle	Clear: 135 ± 5° Frost: 195 ± 5° ***
Nr of LEDs	68 - SMD
Working Temp.	-20 to 40 °C
Isolation	Class III
Protection degree	IP42
Lumen maintenance	LM80 (Report available: <a href="#">LM-80 9000hrs</a> )
Certificate	CE / RoHs

\*Luminosity depreciation based on L70.  
 \*\*Beam angle: 50% of maximum lum.  
 \*\*\*Field angle: 10% of maximum lum.

## Light Technical Data:

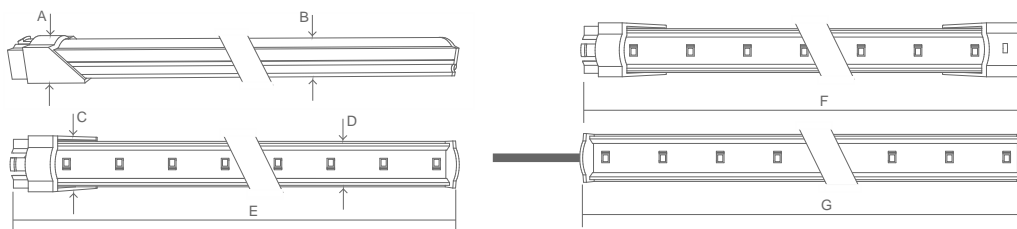
Reference	Description	Lum. flux (Lm)*	Eff. (Lm/W)	Color Temp. (K)**	Color	CRI >	Lens type
11090032161 <a href="#">XXYYZZ</a>	LLED Barra 24V 90 WW303 HE ECO <sup>2</sup> DL Clear	650	114	3045 ± 84	Warm	80	Clear
11090042161 <a href="#">XXYYZZ</a>	LLED Barra 24V 90 WW303 E1 ECO <sup>2</sup> DL Clear	674	118	3045 ± 84	Warm	80	Clear
11090034161 <a href="#">XXYYZZ</a>	LLED Barra 24V 90 NW403 HE ECO <sup>2</sup> DL Clear	680	119	3986 ± 144	Neutral	80	Clear
11090044161 <a href="#">XXYYZZ</a>	LLED Barra 24V 90 NW403 E1 ECO <sup>2</sup> DL Clear	713	125	3986 ± 144	Neutral	80	Clear
11090025161 <a href="#">XXYYZZ</a>	LLED Barra 24V 90 CW503 ECO <sup>2</sup> DL Clear	598	105	5029 ± 186	Cool	80	Clear
11090036161 <a href="#">XXYYZZ</a>	LLED Barra 24V 90 CW573 HE ECO <sup>2</sup> DL Clear	680	119	5668 ± 207	Cool	80	Clear
11090027161 <a href="#">XXYYZZ</a>	LLED Barra 24V 90 CW653 ECO <sup>2</sup> DL Clear	598	105	6536 ± 279	Cool	80	Clear
11090032162 <a href="#">XXYYZZ</a>	LLED Barra 24V 90 WW303 HE ECO <sup>2</sup> DL Frost	510	90	3045 ± 84	Warm	80	Frost
11090042162 <a href="#">XXYYZZ</a>	LLED Barra 24V 90 WW303 E1 ECO <sup>2</sup> DL Frost	513	90	3045 ± 84	Warm	80	Frost
11090034162 <a href="#">XXYYZZ</a>	LLED Barra 24V 90 NW403 HE ECO <sup>2</sup> DL Frost	534	94	3986 ± 144	Neutral	80	Frost
11090044162 <a href="#">XXYYZZ</a>	LLED Barra 24V 90 NW403 E1 ECO <sup>2</sup> DL Frost	542	95	3986 ± 144	Neutral	80	Frost
11090025162 <a href="#">XXYYZZ</a>	LLED Barra 24V 90 CW503 ECO <sup>2</sup> DL Frost	476	83	5029 ± 186	Cool	80	Frost
11090036162 <a href="#">XXYYZZ</a>	LLED Barra 24V 90 CW573 HE ECO <sup>2</sup> DL Frost	534	94	5668 ± 207	Cool	80	Frost
11090027162 <a href="#">XXYYZZ</a>	LLED Barra 24V 90 CW653 ECO <sup>2</sup> DL Frost	476	83	6536 ± 279	Cool	80	Frost

\* Luminous flux ± 7.5%

\* Other color temperatures available upon request



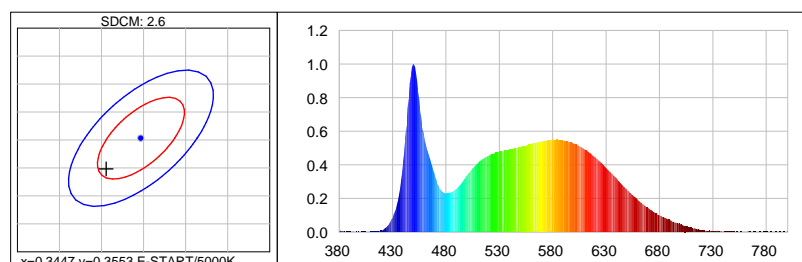
## Dimensions



A (mm)	B (mm)	C (mm)	D (mm)	E (mm)	F (mm)	G (mm)
15	12	20	17	919	935	904

## Photometric Data

### Cool white 5000K 3SDCM



#### Photometric Parameters

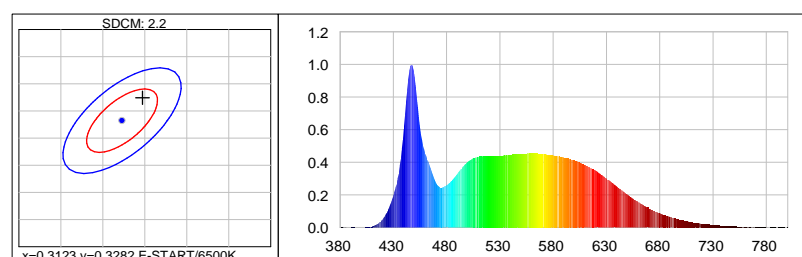
EEL: 0.15 Energy Efficiency Class: A+ (EU 874-2012)

#### CIE Colorimetric Parameters

Chromaticity coordinates:  $x=0.3406$   $y=0.3498$   $u(u')=0.2090$   $v=0.3221$   $v'=0.4831$

CCT:  $T_c=5172K$  ( $duv=0.00096$ ) CRI:  $R_a=85.4$  Color Ratio:  $R=0.156$   $G=0.797$   $B=0.047$

### Cool white 6500K 3SDCM



#### Photometric Parameters

EEL: 0.15

Energy Efficiency Class: A+ (EU 874-2012)

#### CIE Colorimetric Parameters

Chromaticity coordinates:  $x=0.3147$   $y=0.3324$

$u(u')=0.1980$   $v=0.3136$   $v'=0.4704$

CCT:  $T_c=6374K$  ( $duv=0.00392$ ) CRI:  $R_a=87.8$  Color Ratio:  $R=0.140$   $G=0.802$   $B=0.058$

## Options

### Cover type



Clear



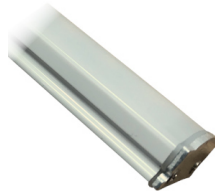
Frost

**XXYYZZ** - The last six digits are additional options.

**XX** - Bar body finishing.

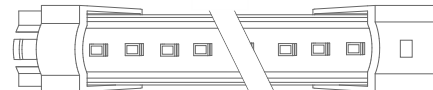
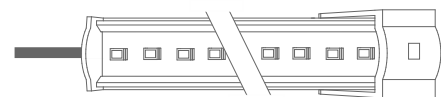

Natural Aluminum  
XX=01

White Aluminum  
XX=02

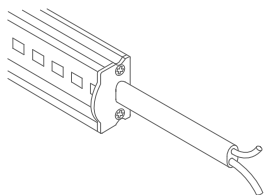
Brown Aluminum  
XX=03

Polycarbonate  
XX=81

**YY** - Bar connection.

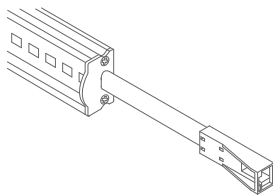

Top Input cable  
YY=01

Male connector input - 1C2P  
YY=04

Male connector input female connector output -  
2C2P  
YY=06

Top Input cable output connector - 1C2P+STopo  
YY=08

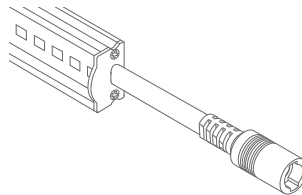
ZZ - Cable type.



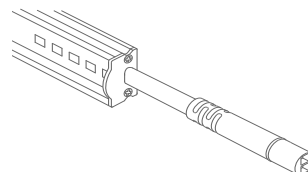
Without connector  
ZZ=00



ASQC2 Connector  
ZZ=27

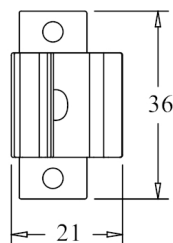
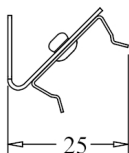
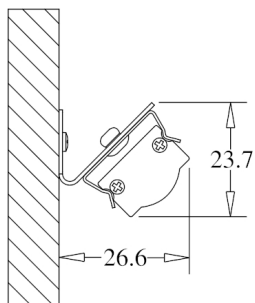


DCJ Connector  
ZZ=41

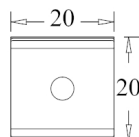
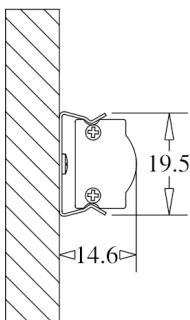


DC24 Connector  
ZZ=46

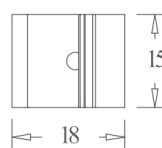
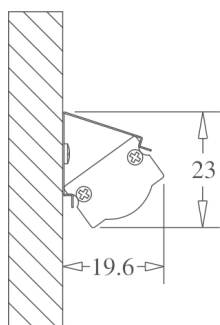
### Fixture option



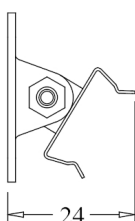
Unit of measurement: mm  
180° CLIP W/ 45° BASE Cod: 8400035115



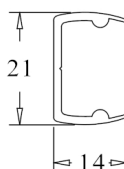
Unit of measurement: mm  
180 ° FIX CLIP Cod: 8400035111



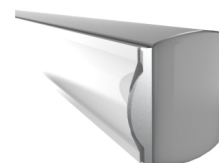
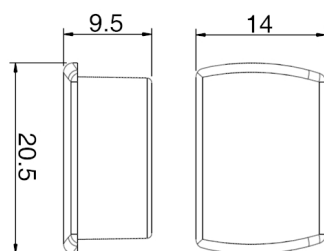
Unit of measurement: mm  
45 ° FIX CLIP Cod: 8400035112



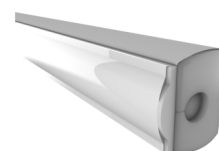
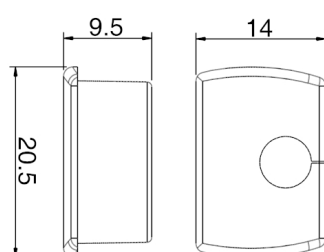
Unit of measurement: mm  
ROTATING CLIP Cod: 8400035114



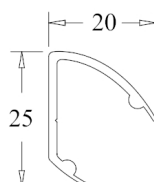
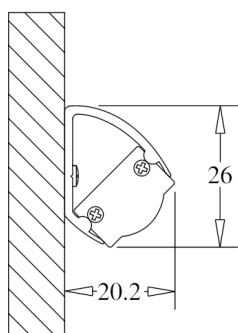
Unit of measurement: mm  
180 ° PVC SUPPORT  
TYPE: 180°



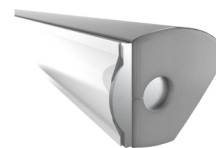
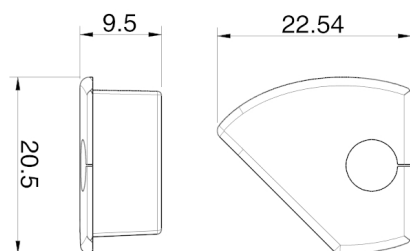
Unit of measurement: mm  
180 ° PVC SUPPORT SILICONE CAP WHITHOUT HOLE  
COLOR CODES AVAIALE: BR: 8400033071 || CZ: 8400033081



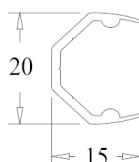
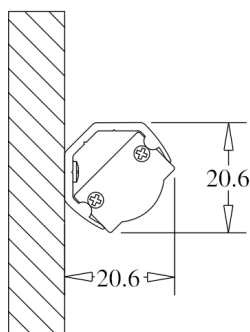
Unit of measurement: mm  
180 ° PVC SUPPORT SILICONE CAP WITH HOLE  
COLOR CODES AVAIALE: BR: 8400033072 || CZ: 8400033082



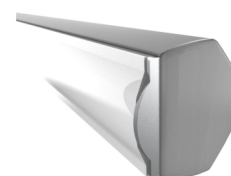
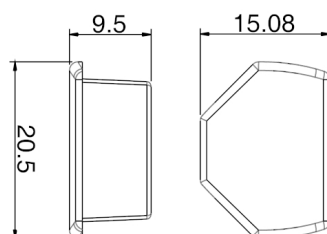
Unit of measurement: mm  
45 ° PVC SUPPORT  
TYPE: 45°



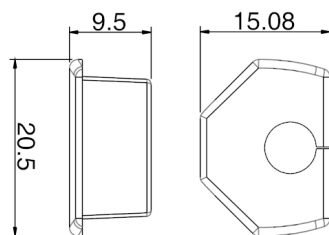
Unit of measurement: mm  
 45 ° PVC SUPPORT SILICONE CAP WITH HOLE  
 COLOR CODES AVAILABLE: BR Right: 8400033076 || CZ Right: 8400033086 || BR Left: 8400033075 || CZ Left: 8400033085



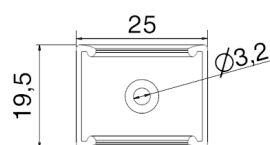
Unit of measurement: mm  
 CORNER PVC SUPPORT  
 TYPE: CORNER



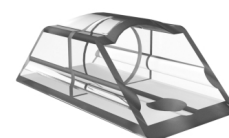
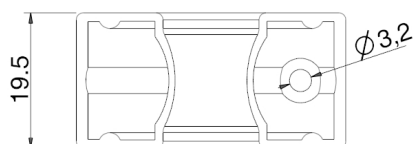
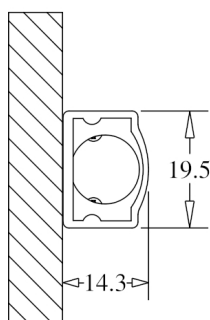
Unit of measurement: mm  
 CORNER PVC SUPPORT SILICONE CAP  
 COLOR CODES AVAILABLE: BR: 8400033073 || CZ: 8400033083



Unit of measurement: mm  
CORNER PVC SUPPORT SILICONE CAP  
COLOR CODES AVAILABLE: BR: 8400033074 || CZ: 8400033084



Unit of measurement: mm  
180° FIXATION CLIP - POLYCARBONATE Cod: 8400035117



Unit of measurement: mm  
FIXATION SUPPORT - POLYCARBONATE Cod: 8400035119